

The-Open-Group

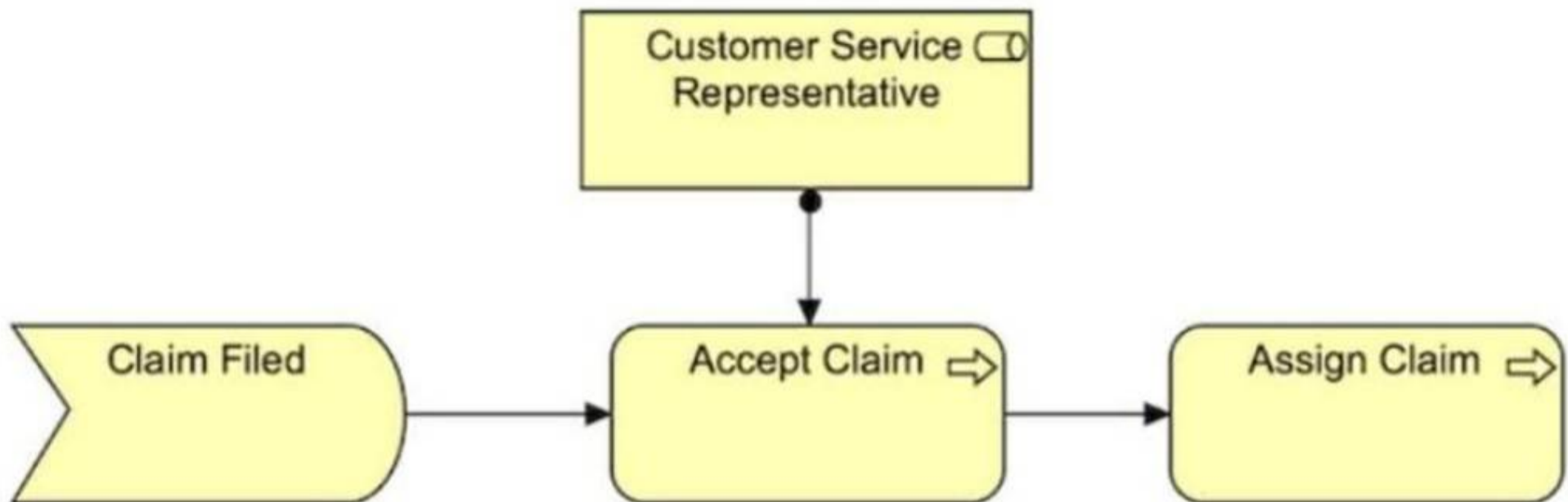
Exam Questions OGA-031

ArchiMate 3 Part 1 Exam



NEW QUESTION 1

Consider the diagram which shows part of the ArchiSurance Claims Administration:



A diagram showing:

? "Claim Filed" (Business Event) "Accept Claim" (Business Process) "Assign Claim" (Business Process)

? A Customer Service Representative is assigned to Accept Claim.)

Which of the following describes this diagram?

- A. The Claim Filed event assigns the Customer Service Representative to participate in the Accept Claim and Assign Claim processing.
- B. The event Claim Filed triggers the Accept Claim process which is serviced by the Customer Service Representative role before the Assign Claim process.
- C. The information that flows from Claim Filed to Accept Claim and then to Assign Claim is reviewed by the Customer Service Representative role.
- D. Business event Claim Filed triggers a business process Accept Claim which in turn triggers an Assign Claim process.

Answer: D

NEW QUESTION 2

Complete the sentence. In the Physical Elements metamodel, a distribution network realizes a _____.

- A. Node
- B. Path
- C. Technology service
- D. Technology interaction

Answer: B

NEW QUESTION 3

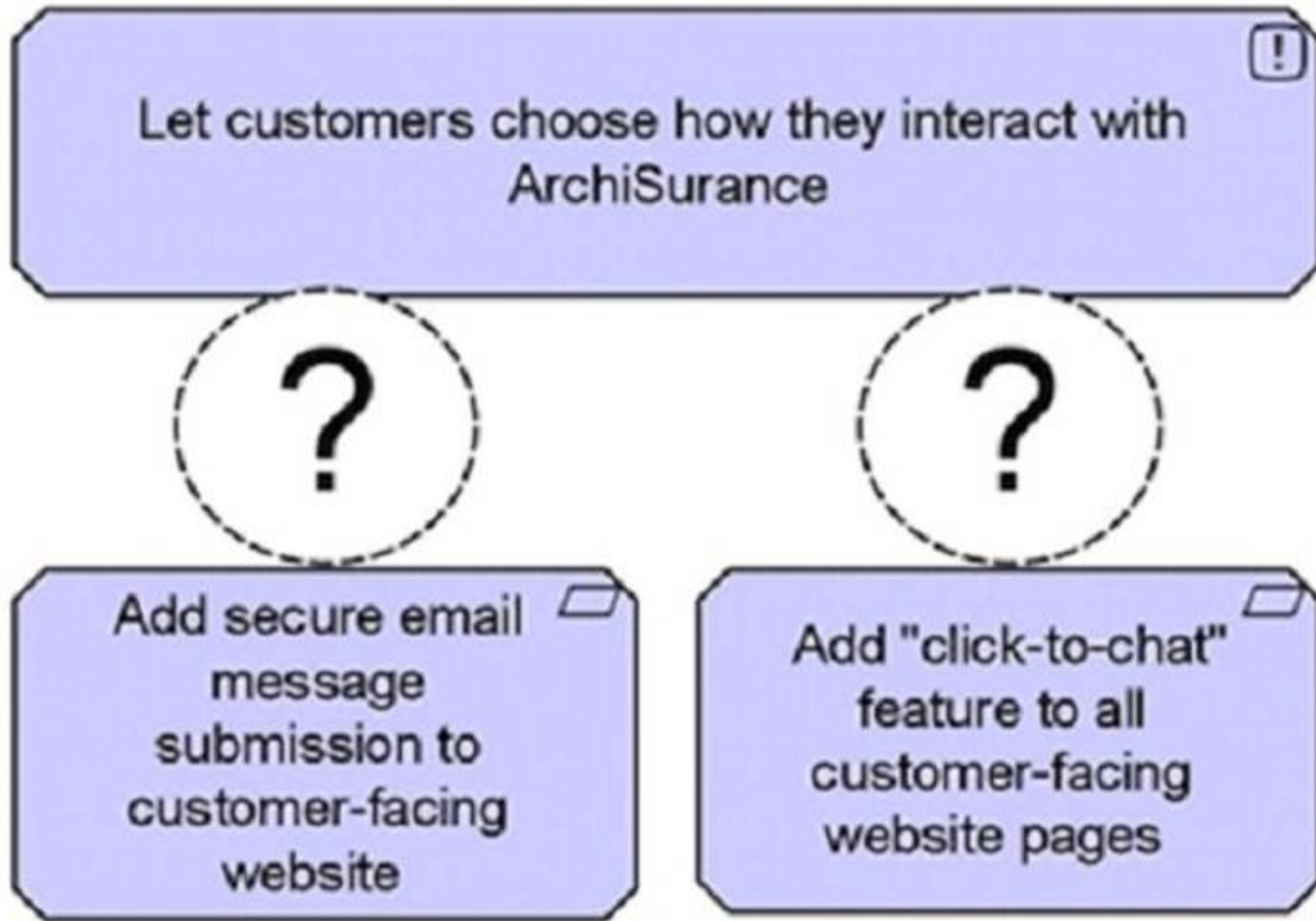
Which statement describes how the Capability element is used?

- A. To represent an asset owned by an organization
- B. To represent what an enterprise has decided to do.
- C. To represent the relative worth, utility, or importance of a core element.
- D. To represent the ability that an active structure element possesses

Answer: D

NEW QUESTION 4

Which of the following is the correct relationship between the bottom elements and the top element?



- A. Realization
- B. Access
- C. Specialization
- D. Aggregation

Answer: D

NEW QUESTION 5

What aspect in the ArchiMate Core Framework represents elements such as business roles, and system software?

- A. Behavior
- B. Motivation
- C. Active structure
- D. Passive structure

Answer: C

NEW QUESTION 6

What concept would you use to define a point of access where an application service is made available to a user?

- A. Application service
- B. Application interface
- C. Application interaction
- D. Application function

Answer: B

NEW QUESTION 7

Consider the following symbol, which represents information about a transformation project at ArchiSurance _



Which statement correctly expresses the meaning of this symbol?

- A. The concern is that customers are defecting to competitors with superior digital experiences
- B. The driver is that customers are defecting to competitors with superior digital experiences
- C. The outcome is that customers are defecting to competitors with superior digital experiences.
- D. The assessment is that customers are defecting to competitors with superior digital experiences

Answer: D

NEW QUESTION 8

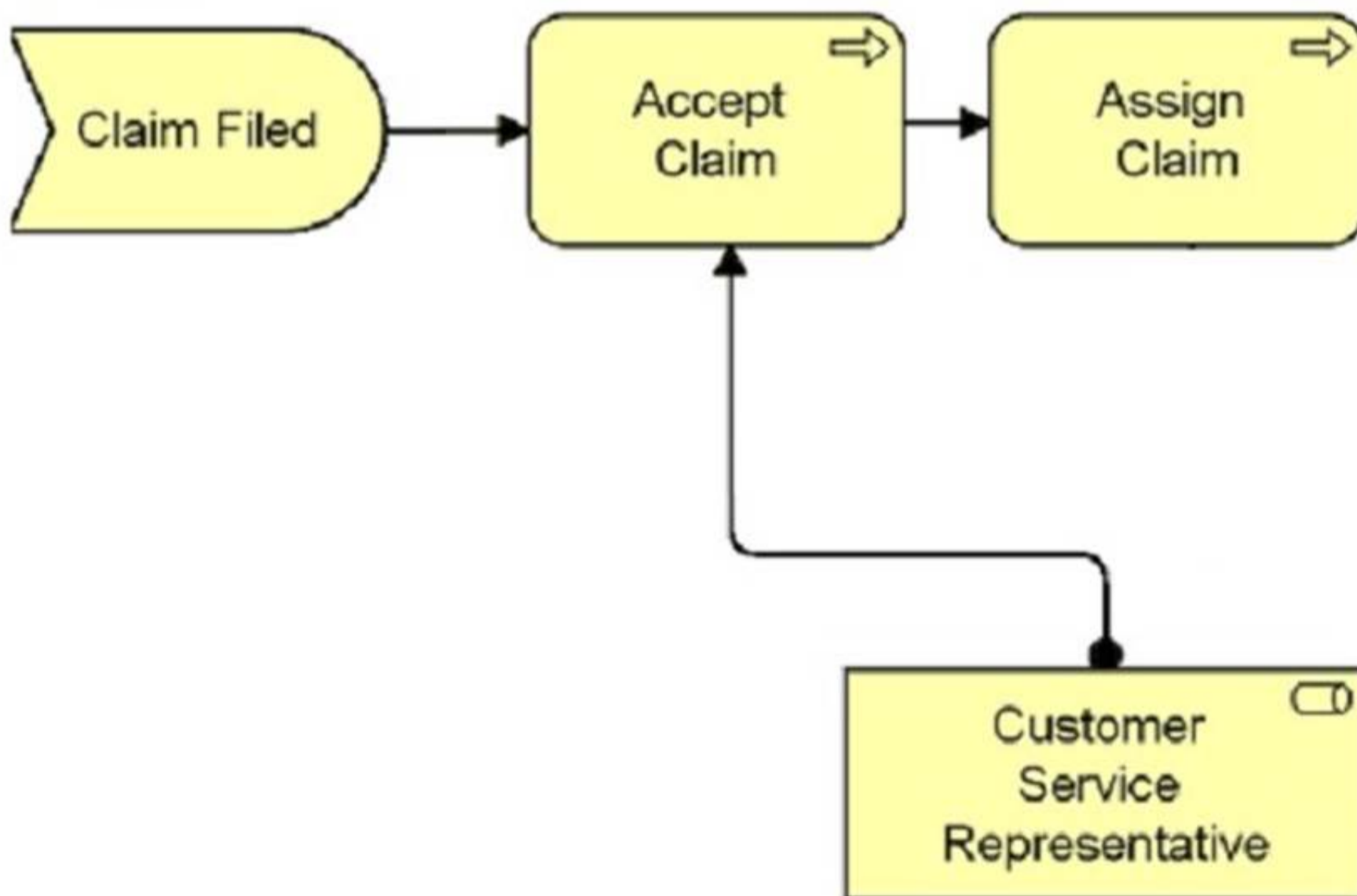
Within the context of Enterprise Architecture, what are the layers that can be modeled with the ArchiMate language?

- A. Strategy, Portfolio, and Segment
- B. Data, Information, and Technology
- C. Business, Application, and Technology
- D. Infrastructure, Operations, and Security

Answer: C

NEW QUESTION 9

Consider the following diagram which shows part of the ArchiSurance Claims Administration:



Which of the following correctly describes this diagram?

- A. The event Claim Filed triggers the Accept Claim process which is serviced by the Customer Service Representative role before the Assign Claim process.
- B. The Claim Filed event assigns the Customer Service Representative to participate in the Accept Claim and Assign Claim processing.
- C. The information that flows from Claim Filed to Accept Claim and then to Assign Claim is reviewed by the Customer Service Representative role.

D. Business event Claim Filed triggers a business process Accept Claim which in turn triggers an Assign Claim process.

Answer: D

NEW QUESTION 10

What is an external active structure element that represents a point of access where one or more services are provided to the environment?

- A. A collaboration
- B. An interaction
- C. An interface
- D. A capability

Answer: C

NEW QUESTION 10

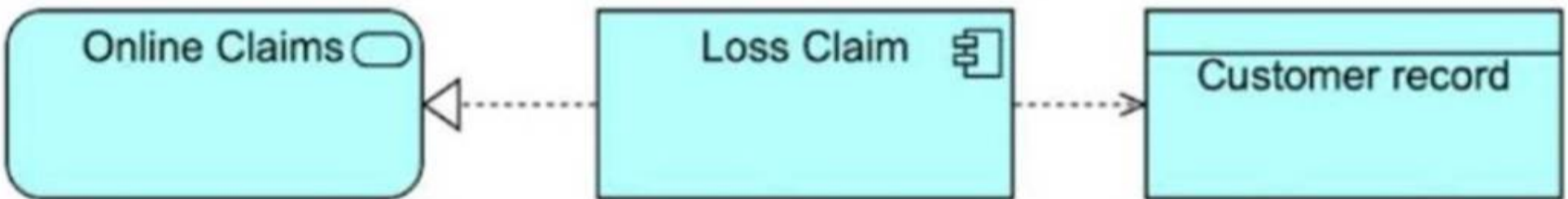
What relationship is allowed from a technology function to an application function?

- A. Assignment
- B. Realization
- C. Aggregation
- D. Influence

Answer: A

NEW QUESTION 15

Consider the diagram showing a system used for settling car insurance claims:



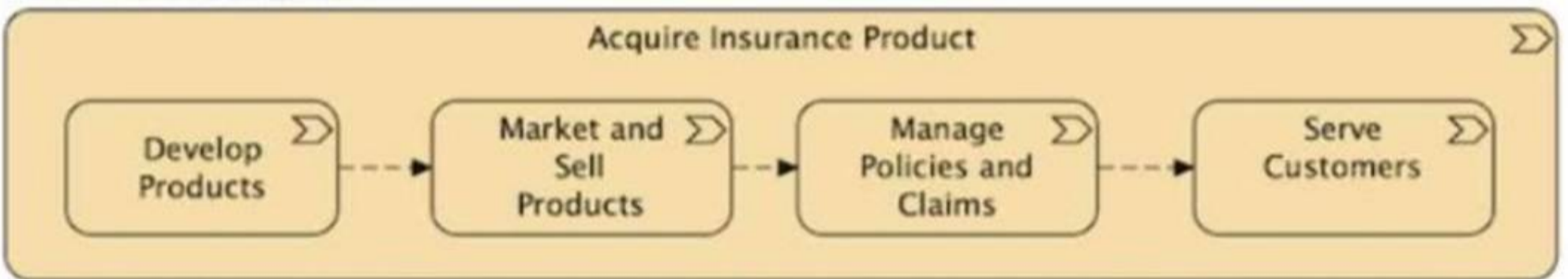
(A diagram showing Online Claims connected to Loss Claim, which in turn accesses Customer Record.)
 Which answer correctly describes this diagram?

- A. The Loss Claim application serves the Online Claims department and accesses a data object called Customer Record.
- B. The Online Claims application uses a back-end module called Loss Claim to access a data object called Customer Record.
- C. The Loss Claim application realizes the Online Claims service and accesses a Customer Record data object.
- D. The Customer Record application uses Loss Claim middleware to present the Online Claims user interface.

Answer: B

NEW QUESTION 18

Consider the diagram:



(A diagram showing "Acquire Insurance Product" decomposed into Develop Products, Market and Sell Products, Manage Policies and Claims, and Serve Customers.)
 Which of the following describes the diagram?

- A. A set of processes for acquiring insurance products.
- B. A sequence of capabilities for acquiring insurance products.
- C. A value stream for acquiring insurance products.
- D. A decomposition of the course of action for acquiring insurance products.

Answer: C

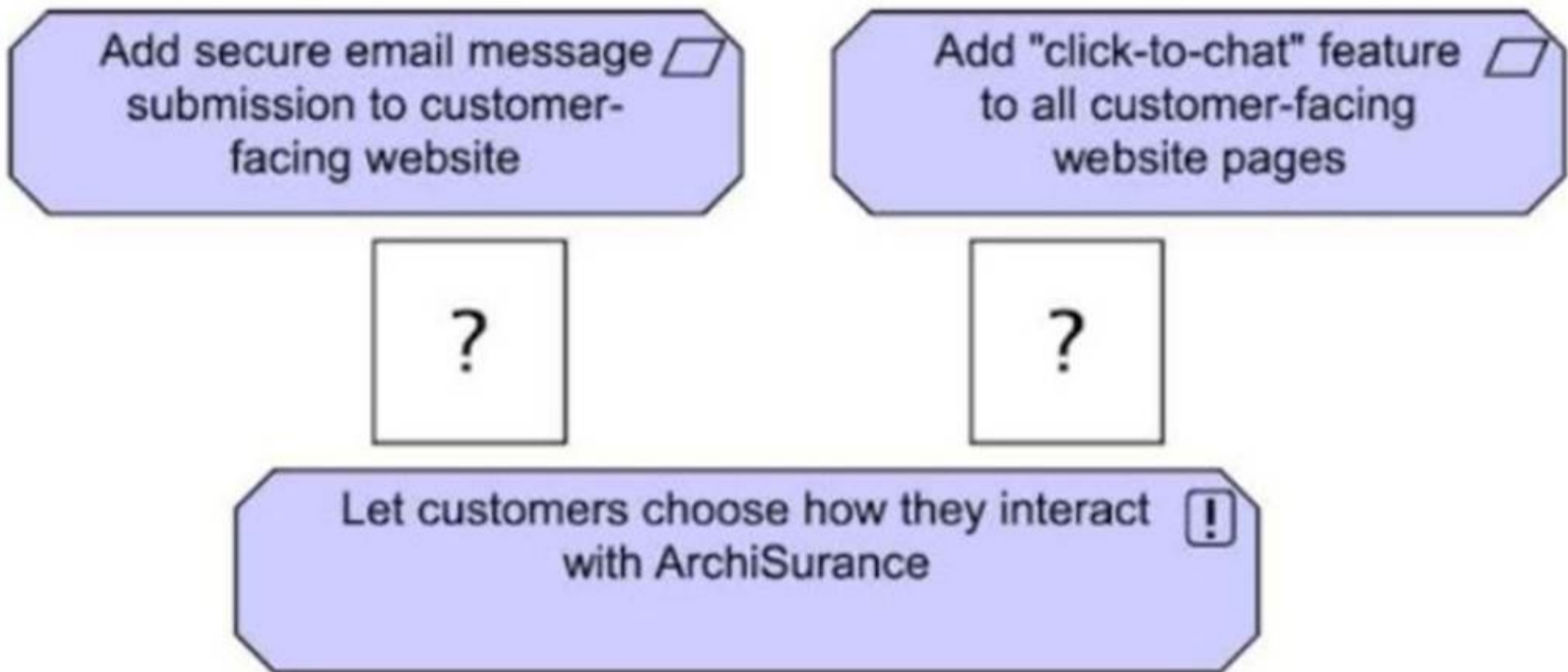
NEW QUESTION 22

What physical element is used to represent tangible matter or energy?

- A. Material
- B. Equipment
- C. Supplies
- D. Distribution node

Answer: A

NEW QUESTION 26
 Consider the diagram:

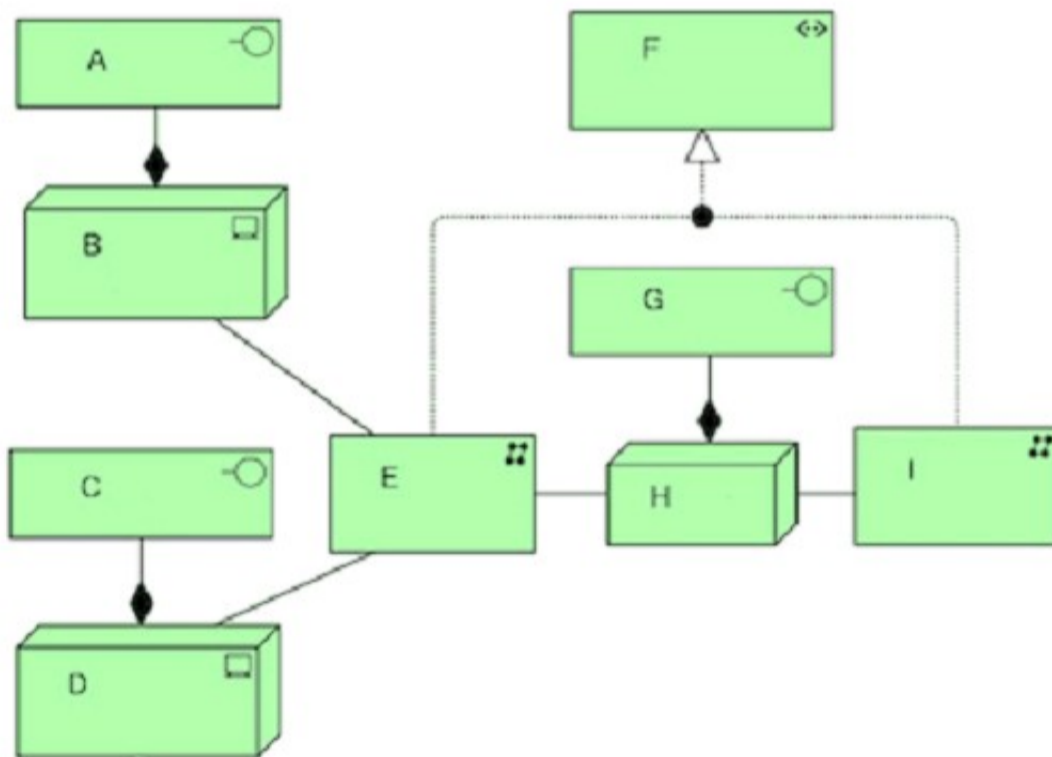


(A diagram showing "Add secure email message submission to customer-facing website" and "Add 'click-to-chat' feature to all customer-facing website pages" at the top, both connected to "Let customers choose how they interact with ArchiSurance" at the bottom with a missing relationship type.)
 Which of the following is the correct relationship between the bottom element and the top elements?

- A. Aggregation
- B. Access
- C. Realization
- D. Specialization

Answer: C

NEW QUESTION 29
 Consider the following diagram:

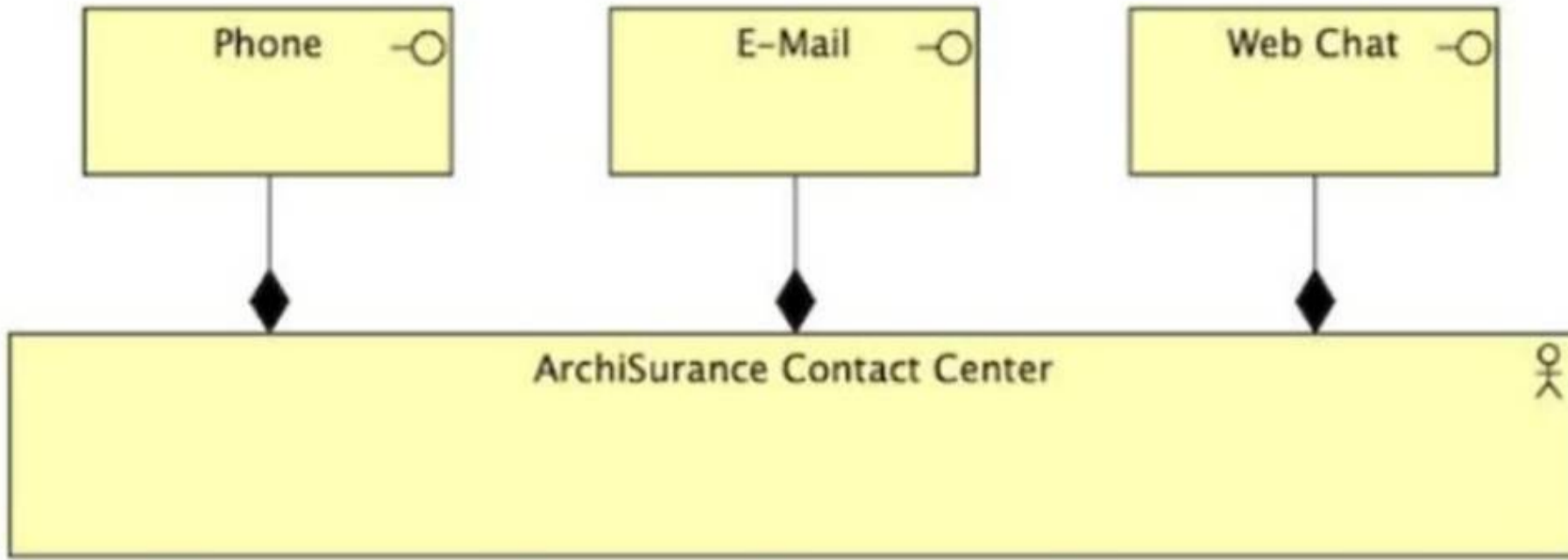


What correctly describes the elements E, F and I?

- A. The two communication networks E and I together realize a path F.
- B. Communication network E passes data from server B through the path F to communication network I
- C. Technology collaboration F aggregates the two communication networks E and I.
- D. Users on servers B and D trigger data from communication network E to I through path F.

Answer: B

NEW QUESTION 33
 Consider the diagram:



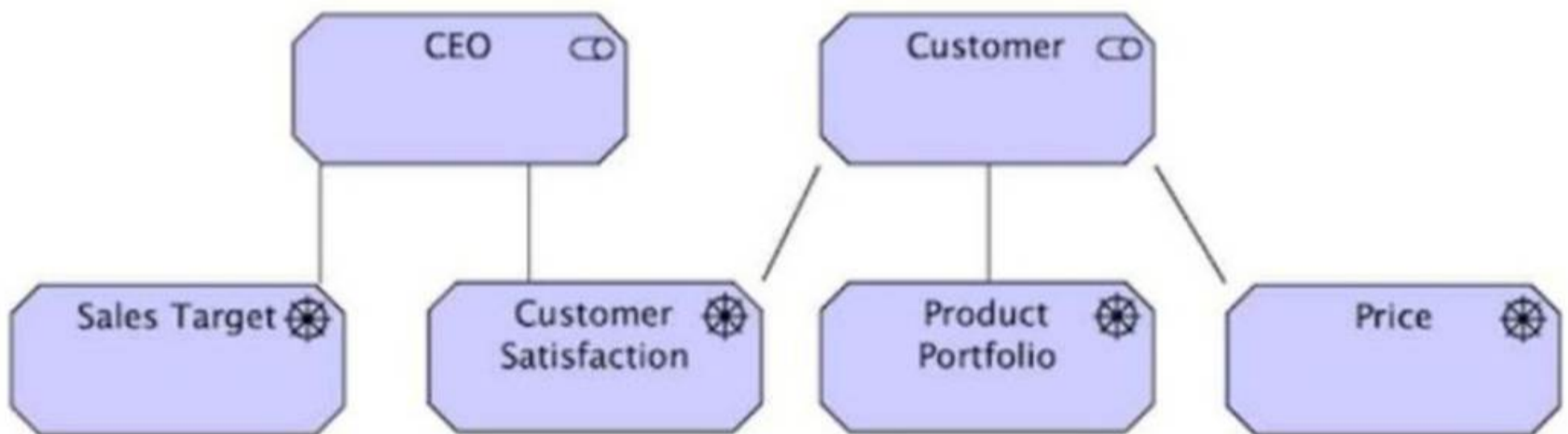
(A diagram showing Phone, E-Mail, and Web Chat connected to ArchiSurance Contact Center through black diamonds.)
 Which of the following describes the ArchiSurance Contact Center?

- A. The Contact Center has a business interaction with its customers using phone, e-mail, and web chat.
- B. The Contact Center uses phone, e-mail, and web chat for internal communication.
- C. The Contact Center has three business interfaces to serve customers: phone, e-mail, and web chat.
- D. The staff within the Contact Center collaborate using phone, e-mail, and web chat.

Answer: C

NEW QUESTION 34

Consider the diagram:



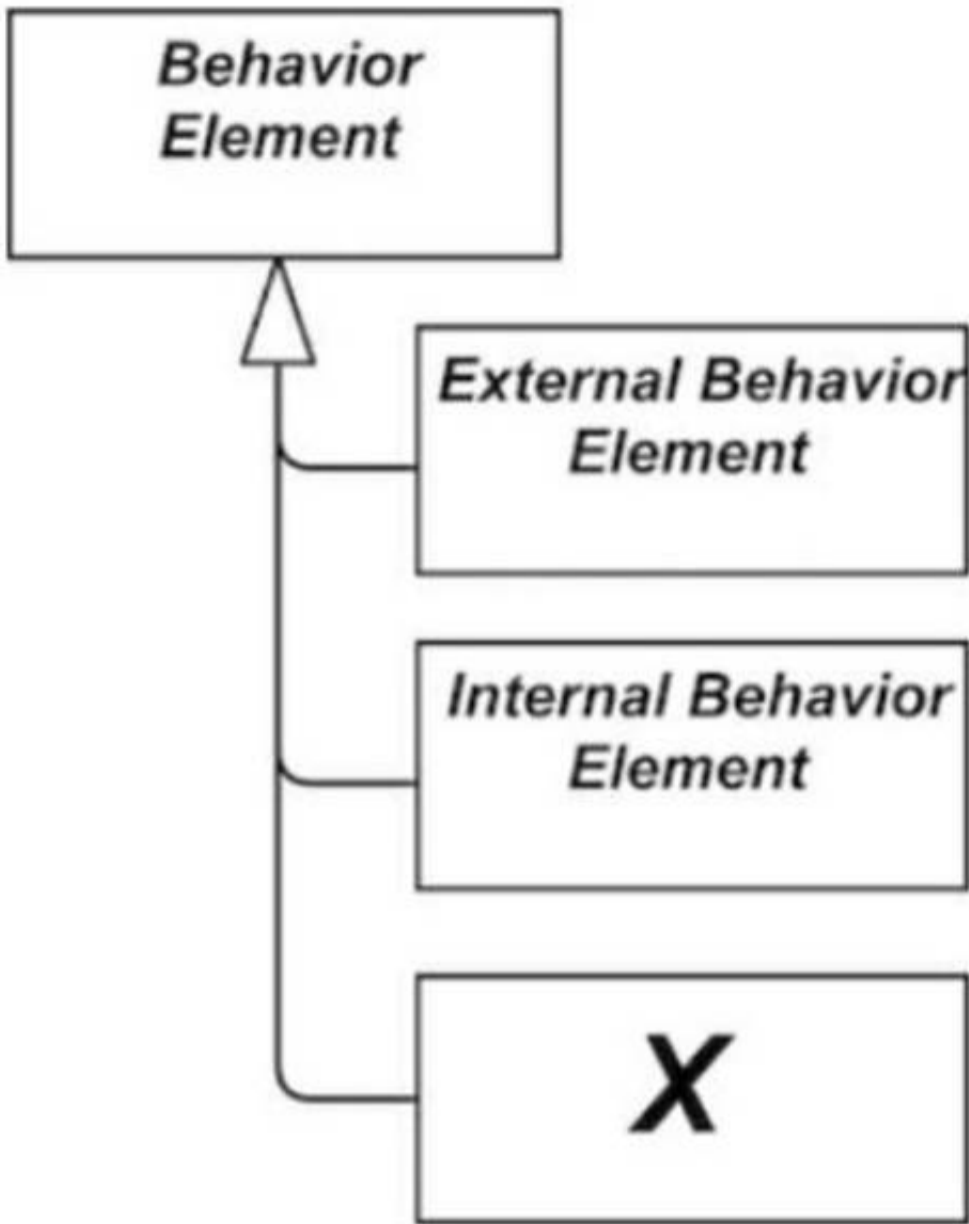
(A diagram showing a CEO connected to Sales Target and Customer Satisfaction, while a Customer is connected to Product Portfolio and Price. Customer Satisfaction appears to be a shared concern.)
 Which of the following answers best interprets the diagram?

- A. Ensuring the Customer is satisfied is a constraint on the CEO achieving the sales target.
- B. Customer satisfaction is a shared concern of the CEO and Customer.
- C. The CEO has the goal to provide customer satisfaction to the Customer.
- D. The CEO has a requirement to provide customer satisfaction.

Answer: B

NEW QUESTION 35

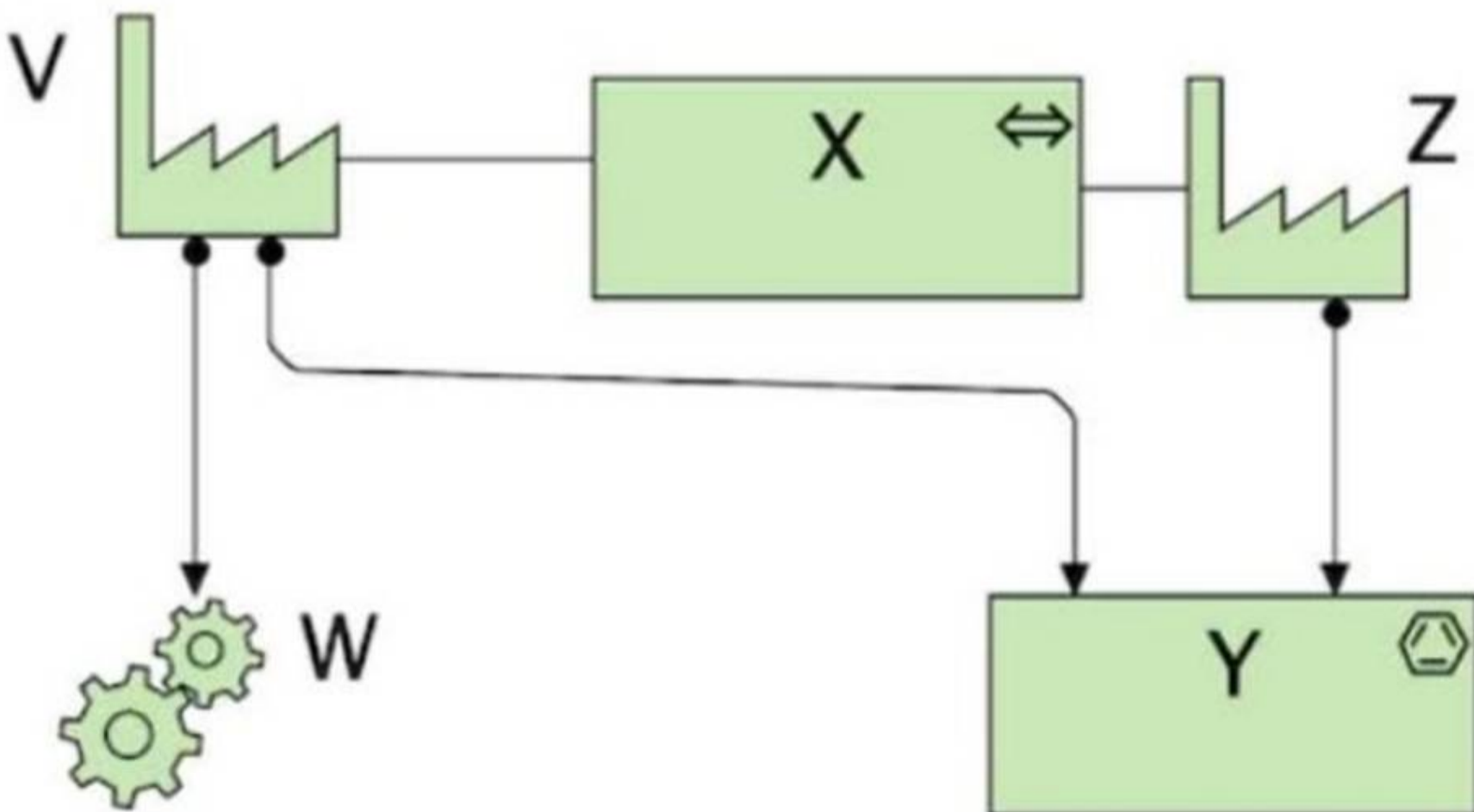
Consider the metamodel fragment shown. What is the element marked X?



- A. Function
- B. Service
- C. Interface
- D. Event

Answer: D

NEW QUESTION 38
 Consider the diagram:



(A diagram showing V, W, X, and Y where:
 ? V has a factory-like symbol.
 ? W has a gear-like symbol.
 ? X is connected to Y, which has a transportation-related symbol.)
 What are elements V, W, and X?

- A. V = Production process, W = Finished Material, X = Transport network
- B. V = Equipment, W = Facility, X = Distribution channel
- C. V = Facility, W = Equipment, X = Distribution network
- D. V = Factory, W = Raw material, X = Transportation

Answer: D

NEW QUESTION 39

Complete the sentence. The "Course of Action" element is used to represent _____.

- A. An ability that an active structure element possesses
- B. The relative worth, utility, or importance of a core element
- C. Results produced by capabilities of an organization
- D. What an enterprise has decided to do

Answer: D

NEW QUESTION 43

.....

Thank You for Trying Our Product

We offer two products:

1st - We have Practice Tests Software with Actual Exam Questions

2nd - Questions and Answers in PDF Format

OGA-031 Practice Exam Features:

- * OGA-031 Questions and Answers Updated Frequently
- * OGA-031 Practice Questions Verified by Expert Senior Certified Staff
- * OGA-031 Most Realistic Questions that Guarantee you a Pass on Your First Try
- * OGA-031 Practice Test Questions in Multiple Choice Formats and Updates for 1 Year

100% Actual & Verified — Instant Download, Please Click
[Order The OGA-031 Practice Test Here](#)