

Cisco

Exam Questions 350-601

Implementing and Operating Cisco Data Center Core Technologies



NEW QUESTION 1

A company plans to migrate some of its services to the cloud. The company does not want to manage or control the underlying cloud infrastructure. It also wants to maintain control over the deployment of its applications and configuration settings of the application-hosting environment. Which cloud service model meets these requirements?

- A. Infrastructure as a Service
- B. Function as a Service
- C. Platform as a Service
- D. Software as a Service

Answer: C

NEW QUESTION 2

An engineer must configure a Cisco UCS domain for monitoring and management by the Cisco Intersight SaaS platform. After the setup is complete, administrators must have full control to configure the device through Cisco UCS Manager and Intersight. Which set of actions accomplishes this task?

- A. Configure Device Connector Access Mode as Allow Control in Device Console Claim the device on Intersight as UCSM Managed Mode.
- B. Configure Device Connector Access Mode as Allow Control in Cisco UCS Manager Claim the device on intersightc as Intersight Managed Mode
- C. Configure Device Connector Access Moao as Allow Control in Device Consol
- D. Claim the device on intersight as Intersight Managed Mode
- E. Configure Device Connector Access Mode as Allow Control in Cisco UCS Manager Claim the device on intersight as UCSM Managed Mode
- F. Option A
- G. Option B
- H. Option C
- I. Option D

Answer: C

NEW QUESTION 3

A network administrator is creating a custom Django self-service portal that runs on a Linux server to automate the creation of new VLANs on Cisco UCS Manager. Which feature must be installed and configured on the server?

- A. Cisco ucs Powertool Suite
- B. Cisco DNA Center API
- C. Cisco AppDynamics
- D. Cisco UCS Python SDK

Answer: C

NEW QUESTION 4

An engineer needs to implement a solution that prevents loops from occurring accidentally by connecting a switch to interface Ethernet1/1. The port is designated to be used for host connectivity. What configuration should be implemented?

- ☒ switch# configure terminal
switch(config)# interface Ethernet1/1
switch(config-if)# spanning-tree guard loop
- ☐ switch# configure terminal
switch(config)# interface Ethernet1/1
switch(config-if)# spanning-tree bpdufilter enable
- ☐ switch# configure terminal
switch(config)# interface Ethernet1/1
switch(config-if)# spanning-tree bpduguard enable
- ☐ switch# configure terminal
switch(config)# interface Ethernet1/1
switch(config-if)# spanning-tree loopguard default

- A. Option A
- B. Option B
- C. Option C
- D. Option D

Answer: C

NEW QUESTION 5

Which component is upgraded by using an EPLD upgrade on a Cisco Nexus 9000 Series Switch?

- A. dual-homed fabric extenders
- B. BIOS
- C. field-programmable gate arrays
- D. ISSU of the NX-OS version

Answer: C

NEW QUESTION 6

An engineer must implement a disaster recovery policy for the Cisco UCS infrastructure. The solution must meet these criteria:

- The Recovery Point Objective must be 48 hours.
- The backup must use encrypted transmission.
- The Recovery Time Objective must be 4 hours.

Which configuration set must be used in the scheduled backup to meet these requirements?

- ☒ Protocol: SFTP
Schedule: Weekly
- ☐ Protocol: FTP
Schedule: Bi-Weekly
- ☐ Protocol: TFTP
Schedule: Bi-Weekly
- ☐ Protocol: SCP
Schedule: Daily

- A. Option A
- B. Option B
- C. Option C
- D. Option D

Answer: D

NEW QUESTION 7

Which data structure results from running this Python code?

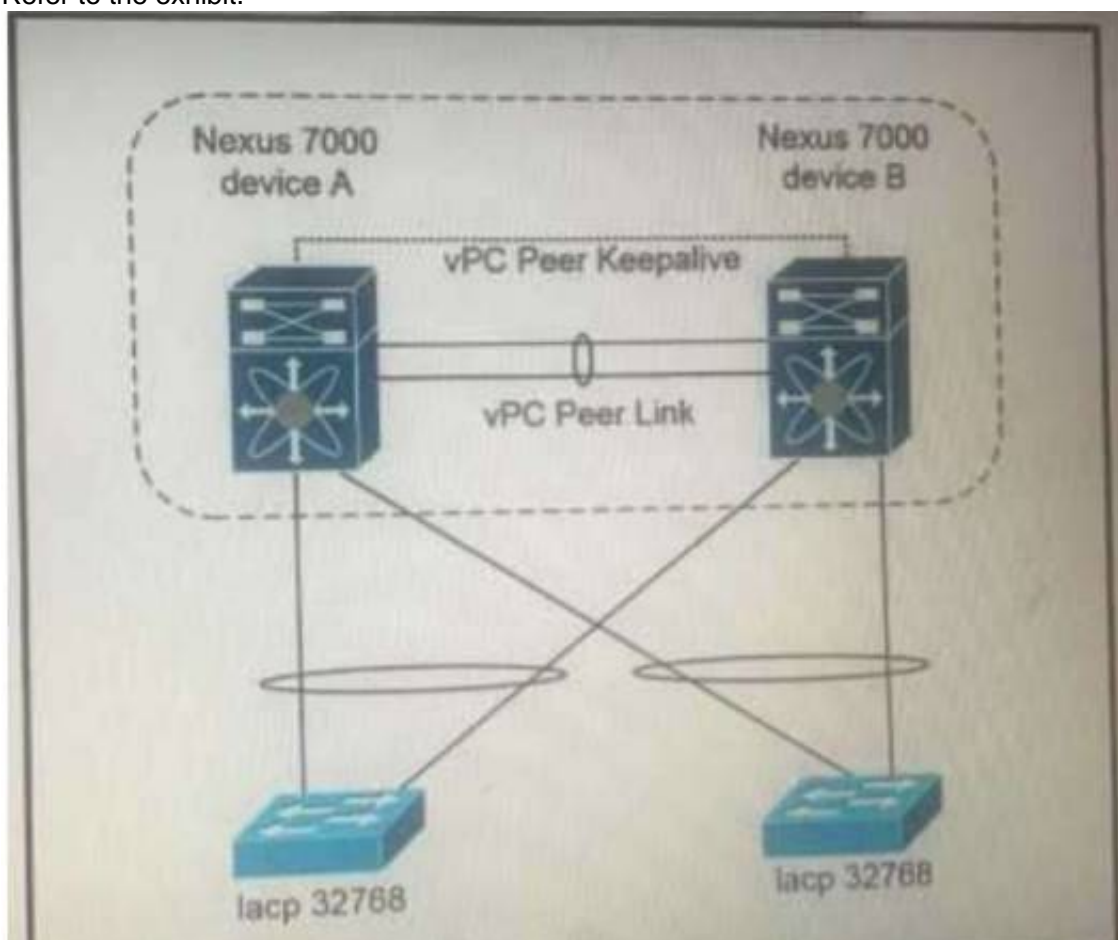
```
>>> import json
>>> f = open('fname.json', 'r')
>>> var1 = json.load(f)
>>> var1
{'u'bd': u'bd1', u'ap': {u'epgs': [{u'name': u'app'}, {u'name': u'web'}, {u'name': u'db'}], u'name': u'OnlineStore'}, u'name': u'39233259', u'pvn': u'pvn1'}
```

- A. tuple
- B. dictionary
- C. set
- D. list

Answer: B

NEW QUESTION 8

Refer to the exhibit.



Which configuration ensure that the cisco Nexus 7000 series switches are the primary devices for LACP?

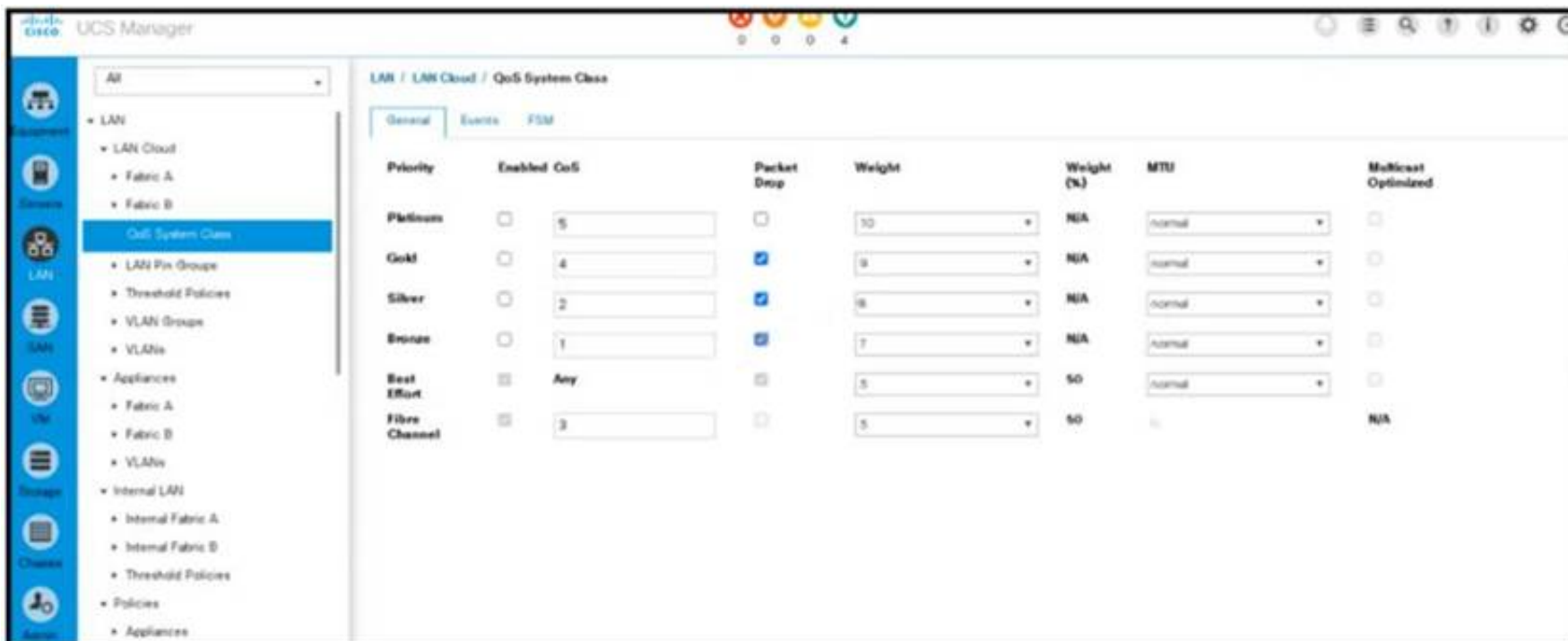
- A. N7K_A(config-vpc-domain)# system-priority 4000
 N7K_B(config-vpc-domain)# system-priority 4000
- B. N7K_A(config-vpc-domain)# system-priority 100
 N7K_B(config-vpc-domain)# system-priority 200
- C. N7K_A(config-vpc-domain)# system-priority 32768
 N7K_B(config-vpc-domain)# system-priority 32768
- D. N7K_A(config-vpc-domain)# role priority 1
 N7K_B(config-vpc-domain)# role priority 2

- A. Option A
 B. Option B
 C. Option C
 D. Option D

Answer: C

NEW QUESTION 9

Refer to the exhibit.



An engineer must configure a QoS policy that controls only vHBA traffic. Which policy must be used to meet this requirement?

- A. Best Effort
 B. Fibre Channel
 C. Gold
 D. Platinum

Answer: B

NEW QUESTION 10

Which method must a network engineer use to upgrade the BIOS firmware of a Cisco UCS standalone C-Series rack-mount server?

- A. Use the Cisco host upgrade utility.
 B. Use the Cisco hardware upgrade utility.
 C. Use the Cisco host firmware policy.
 D. Use the U-ACPI Interface.

Answer: A

NEW QUESTION 10

A server engineer wants to control power usage on a Cisco UCS C-Series rack server down to the component level. Which two components support specific power limits? (Choose two.)

- A. storage controller
 B. network controller
 C. processor
 D. graphic card
 E. memory

Answer: CE

Explanation:

https://www.cisco.com/c/en/us/td/docs/unified_computing/ucs/c/sw/gui/config/guide/4_1/b_Cisco_UCS_C-serie

NEW QUESTION 11

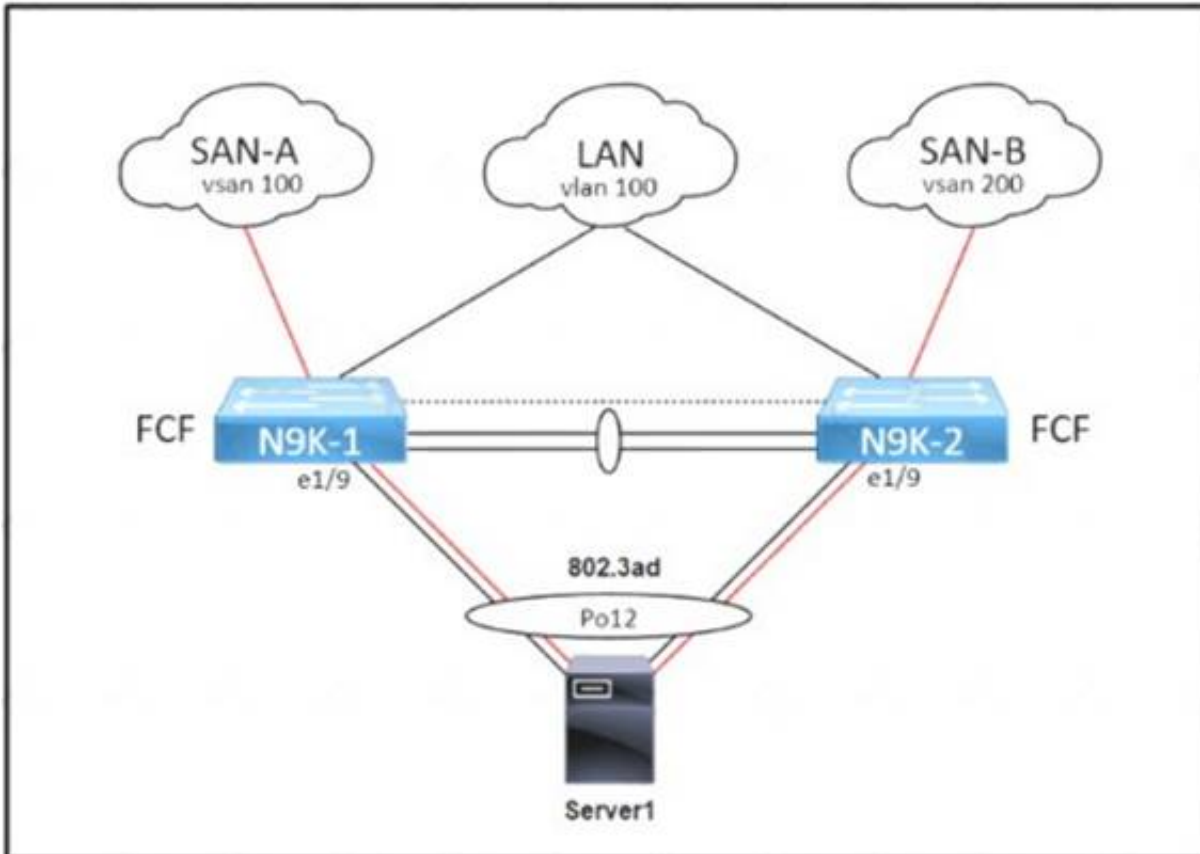
An engineer is configuring AAA authentication on an MDS 9000 switch. The LDAP server is located under the IP 10.10.2.2. The data sent to the LDAP server should be encrypted. Which command should be used to meet these requirements?

- A. ldap-server host 10.10.2.2 enable-ssl
- B. ldap-server 10.10.2.2 port 443
- C. ldap server host 10.10.2.2 key SSL_KEY
- D. ldap-server 10.10.2.2 key SSL_KEY

Answer: A

NEW QUESTION 15

Refer to the exhibit.



An administrator must complete the unified fabric configuration between Server1 and a pair of Cisco Nexus 9000 Series Switches. Drag and drop the code snippets from the right onto the blanks in the code on the left to complete the N9K-1 configuration. Snippets are used more than once.

```

service-policy type qos input default-fcoe-in-policy
int [ ]
  switchport trunk allowed [ ] 1, 100
int [ ]
  bind interface [ ]
  no shut

```

vlan

vfc 1

po12

- A. Mastered
- B. Not Mastered

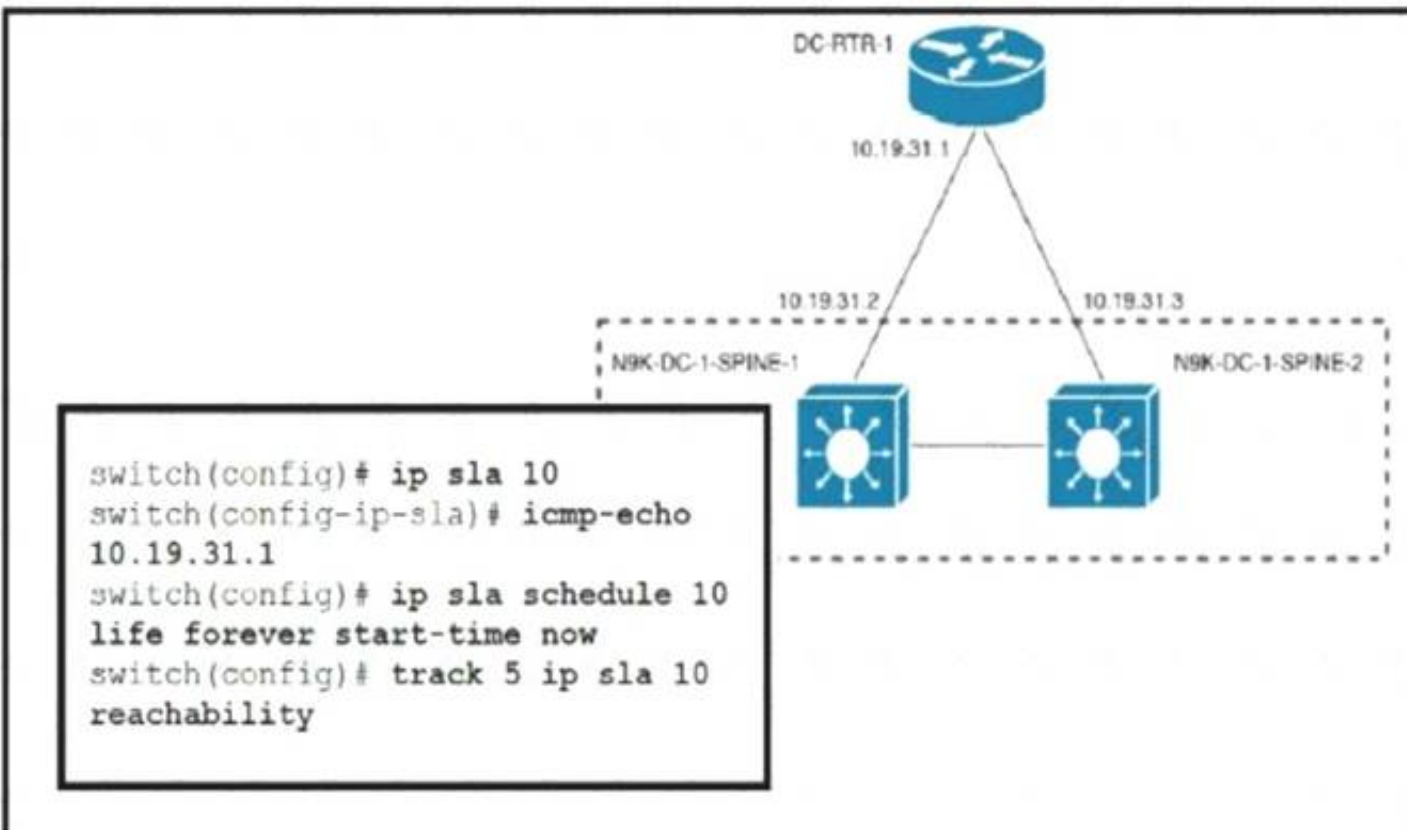
Answer: A

Explanation:

Po12
 Vlan Vfc1 Po12

NEW QUESTION 20

Refer to the exhibit.



An engineer must invoke a Python script that alerts the operations team when the router DC-RTR-1 becomes unreachable. Which configuration set accomplishes this task?

- ☒ track 3 ip sla 10 reachability
event name GATEWAY-DOWN
event state down
action cli command routerdown.py
- ☐ scheduler job name ROUTER-DOWN
job track 9 state down
action 1.0 cli source routerdown.py
schedule 10
- ☐ event scheduler name DOWN-ROUTER
event track 2 state 1 not up
event action 1.0 command source routerdown.py
event start 0:00 repeat 0:05
- ☐ event manager applet ROUTER-DOWN-SLA
event track 5 state down
action 1.0 event-default
action 2.0 cli command source routerdown.py

- A. Option A
- B. Option B
- C. Option C
- D. Option D

Answer: D

NEW QUESTION 25

An engineer must configure a VXLAN routing on a cisco Nexus 9000 series Switch. The engineer requires a solution where all the leaf switches have the same gateway MAC and IP address. Which configuration set accomplishes this task?

- A)
NX9K(config)# fabric forwarding anycast-gateway-mac AA:BB:AA:BB:AA:BB
NX9K(config)# interface VLAN-interface-name NX9K(config-if)# fabric forwarding mode anycast-gateway
- B)
NX9K(config)# fabric forwarding anycast-gateway-mac AA:BB:AA:BB:AA:BB
NX9K(config)# interface VLAN-interface-name
NX9K(config-if)# vrf member vrf-name
NX9K(config-if)# fabric forwarding mode anycast-gateway
- C)
NX9K(config)# install feature-set fabric
NX9K(config)# feature-set fabric
NX9K(config)# fabric forwarding anycast-gateway-mac AA:BB:AA:BB:AA:BB
NX9K(config)# interface VLAN-interface-name
NX9K(config-if)# vrf member vrf-name
NX9K(config-if)# fabric forwarding mode anycast-gateway
- D)

```
NX9K(config)# install feature-set fabric
NX9K(config)# feature-set fabric
NX9K(config)# fabric forwarding anycast-gateway-mac AA:BB:AA:BB:AA:BB
NX9K(config)# interface VLAN-interface-name
NX9K(config-if)# fabric forwarding mode anycast-gateway
```

- A. Option A
- B. Option B
- C. Option C
- D. Option D

Answer: C

NEW QUESTION 28

An engineer upgrades the bash on the Cisco Nexus 9000 Series Switch.

```
guestshell:~$ sudo [MISSING_COMMAND] /bootflash/bash-4.2_8642092948678a-r8x86_64.rpm.rpm
Preparing...
##### [100%]
1:bash ##### [100%]
update-alternatives: Linking //bin/sh to /bin/bash
```

Which command must be used to complete the task?

- A. rpm -qa
- B. rpm -Uhv
- C. upgrade -U
- D. update -vh

Answer: B

NEW QUESTION 30

A Cisco MDS 9000 Series Switch is configured for SAN Analytics and SAN Telemetry Streaming. An engineer must enable analytics for NVMe on interfaces in the range of fc1/1-12. Due to a large amount of traffic generated in the SAN environment, the data must be collected at regular intervals of 60 seconds from ports fc1/1-12 and then for ports fc13-24 for the next 60 seconds. Ports in the range fc4/13-14 were already enabled for analytics. Which set of commands must be used to meet these requirements?

- ☒ interface fc1/1-12
 - port-sampling module 4 size 12 interval 60
 - analytics nvme
- ☐ interface fc1/1-12
 - port-sampling module 4 size 12 interval 60000
 - analytics type fc-scsi
- ☐ analytics port-sampling module 4 size 12 interval 60000
- ☐ interface fc1/1-12
 - analytics fc-scsi
 - analytics fc-nvme
- ☐ analytics port-sampling module 4 size 12 interval 60
 - interface fc1/1-12
 - analytics type fc-nvme

- A. Option A
- B. Option B
- C. Option C
- D. Option D

Answer: D

NEW QUESTION 32

An engineer needs to install a new package on a Cisco Nexus 9000 Series Switch. What is the impact of running the install commit <filename> command on the switch?

- A. The switch is restarted after the upgrade is complete
- B. The package is used after the switch is restarted.
- C. The previous package that was in use is deleted from bootflash.
- D. The package is used in the running configuration.

Answer: B

NEW QUESTION 37

When deploying a Cisco HyperFlex edge with a pair of switches, what is the minimum number of interfaces in trunk mode required on each HX node?

- A. 1
- B. 2
- C. 4
- D. 6

Answer: B

NEW QUESTION 41

Refer to the exhibit.

```
CISCO-UCS-A# scope org /
CISCO-UCS-A /org* # create service-profile Cisc01 instance
CISCO-UCS-A /org/service-profile* # set bios-policy bios1
CISCO-UCS-A /org/service-profile* # set boot-policy boot1
CISCO-UCS-A /org/service-profile* # set ext-mgmt-ip-state none
CISCO-UCS-A /org/service-profile* # set host-fw-policy ipmi-user987
CISCO-UCS-A /org/service-profile* # set identity dynamic-uuid derived
CISCO-UCS-A /org/service-profile* # set ipmi-access-profile ipmi1
CISCO-UCS-A /org/service-profile* # set local-disk-policy local1
CISCO-UCS-A /org/service-profile* # set maint-policy maint1
CISCO-UCS-A /org/service-profile* # set mgmt-fw-policy mgmt1
CISCO-UCS-A /org/service-profile* # set power-control-policy power1
CISCO-UCS-A /org/service-profile* # set scrub-policy scrub1
CISCO-UCS-A /org/service-profile* # set sol-policy sol1
CISCO-UCS-A /org/service-profile* # set stats-policy stats1
CISCO-UCS-A /org/service-profile* # set user-label Cisco
CISCO-UCS-A /org/service-profile* # vcon-policy vconnpolicy
CISCO-UCS-A /org/service-profile* # commit-buffer
CISCO-UCS-A /org/service-profile #
```

What is a characteristic presented in the service profile of the UUID?

- A. based on the hardware
- B. vendor assigned
- C. unique system generated
- D. allocated from a UUID pool

Answer: A

Explanation:

there is no parameter for 'set identity dynamic-uuid' to specify a pool name - you can only state "derived" or a 32 hex character string (128-bits, therefore full UUID).

```
ucspe /org/service-profile # set identity dynamic-uuid derived Derived
```

```
FFFFFFFF-FFFF-FFFF-FFFF-FFFFFFFFFFFFFF Dynamic UUID
```

The documentation, as usual for Cisco, is poor. Shagua references old v1.4.1 documentation but it's the same in 4.1. It's inaccurate as uuid-pool should now read uuid-suffix-pool. You can use UCSPE to check the CLI with contextual help.

```
ucspe /org/service-profile # set identity dynamic-uuid Dynamic UUID dynamic-wwnn Dynamic WWNN uuid-suffix-pool UUID Suffix Pool wwnn-pool WWNN Pool
```

If set identity dynamic-uuid only gives us the option of a static UUID or the parameter "derived", and set identity uuid-suffix-pool is the option to assign a pool... I would suggest that the most logical answer here is

- derived from the hardware. https://www.cisco.com/en/US/docs/unified_computing/ucs/sw/cli/config/guide/1.4.1/CLI_Config_Guide_1_4_1

NEW QUESTION 44

Which virtual MAC address is the default for HSRP version 2 group 10?

- A. 0000.5E00.0110
- B. 0000.0C9F.F00A
- C. 3716.1350.1C0A
- D. 0000.0C9F.F010

Answer: B

Explanation:

[https://www.cisco.com/c/en/us/td/docs/ios-xml/ios/ipapp_fhrp/configuration/xr-3s/fhrp-xe-3s-book/fhrp-hsrp-v2.h](https://www.cisco.com/c/en/us/td/docs/ios-xml/ios/ipapp_fhrp/configuration/xr-3s/fhrp-xe-3s-book/fhrp-hsrp-v2.html)

NEW QUESTION 47

Drag and drop the network assurance concepts from the left onto the corresponding benefits on the right.

Cisco Tetration	allows close to real-time data monitoring
Data Management Engine	confirms that the network operates consistently with business requirements
Cisco Network Assurance Engine	offers overall protection and enables analysis of the network in real time to identify security incidents faster
Streaming Telemetry	allows the characteristics to be presented as object properties

- A. Mastered
 B. Not Mastered

Answer: A

Explanation:

Diagram Description automatically generated

NEW QUESTION 52

An engineer is duplicating an existing Cisco UCS setup at a new site. What are two characteristics of a logical configuration backup of a Cisco UCS Manager database? (Choose two.)

- A. contains the AAA and RBAC configurations
 B. contains a file with an extension.tgz that stores all of the configurations
 C. contains the configuration organizations and locales
 D. contains all of the configurations
 E. contains the VLAN and VSAN configurations

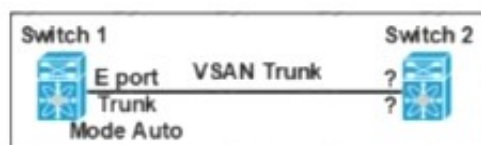
Answer: CE

Explanation:

Logical configuration—An XML file that includes all logical configuration settings such as service profiles, VLANs, VSANs, pools, and policies. You can use the file generated from this backup to import these configuration settings to the original fabric interconnect or to a different fabric interconnect. You cannot use this file for a system restore.

NEW QUESTION 55

Refer to the exhibit.



Which feature must be used to configure on switch 2 to establish a VSAN trunk between switch 1 and switch 2?

- A. F portTrunk Mode Passive
 B. E PortTrunk Mode On
 C. N PortTrunk Mode Active
 D. NP PortTrunk Mode Auto

Answer: B

NEW QUESTION 57

A network engineer configures a converged network adapter (CNA) and must associate a virtual fiber Channel 7 interface to VSAN 7. The CNA connected to the interface Eth1/7, and VLAN 700 is mapped to the VSNA. Which configuration must be applied to create the virtual Fiber Channel interface and associate it with the Ethernet physical interface?

A)

```
switch(config)# vlan 700
switch(config-vlan)# fcoe vsan 7
```

B)

```
switch(config)# vsan database
switch(config-vsan)# vsan 7 interface vfc 7
```

C)

```
switch(config)# interface ethernet 1/7
switch(config-if)# vfc 7 attach vlan 1,700
```

D)

```
switch(config)# interface vfc 7
switch(config-if)# bind interface ethernet 1/7
```

- A. Option A
- B. Option B
- C. Option C
- D. Option D

Answer: D

NEW QUESTION 62

Refer to the exhibit.

```
Nexus# show vpc peer-keepalive | i Keepalive
--Keepalive interval : 1000 msec
--Keepalive timeout : 5 seconds
--Keepalive hold timeout : 3 seconds
--Keepalive vrf : management
--Keepalive udp port : 3200
--Keepalive tos : 192

Nexus# ethanalyzer local interface mgmt limit-captured-frames 1000

Capturing on mgmt0
2019-06-15 12:01:51.242597 192.168.254.11 -> 192.168.254.3 ICMP Echo (ping) request
2019-06-15 12:01:51.242860 192.168.254.3 -> 192.168.254.11 ICMP Echo (ping) reply
2019-06-15 11:50:15.975474 192.168.254.1 -> 192.168.254.3 TCP 47540 > bootps [SYN] Seq=0 Win=1024 Len=0 MSS=1460
2019-06-15 11:50:15.975547 192.168.254.3 -> 192.168.254.1 TCP 29 > 47540 [RST, A CK] Seq=1 Ack=1 Win=0 Len=0
2019-06-15 11:50:15.975564 192.168.254.1 -> 192.168.254.3 TCP 47540 > 44 [SYN] Seq=0 Win=1024 Len=0 MSS=1460
2019-06-15 11:50:15.975924 192.168.254.1 -> 192.168.254.3 TCP 47540 > discard [SYN] Seq=0 Win=1024 Len=0 MSS=1460
2019-06-15 11:50:15.976027 192.168.254.1 -> 192.168.254.3 TCP 47540 > 97 [SYN] Seq=0 Win=1024 Len=0 MSS=1460
2019-06-15 11:50:15.976381 192.168.254.1 -> 192.168.254.3 TCP 47540 > 35 [SYN] Seq=0 Win=1024 Len=0 MSS=1460
2019-06-15 11:50:16.661845 192.168.254.3 -> 192.168.254.4 UDP Source port: 3200 Destination port: 3200
2019-06-15 11:50:16.761147 00:8e:73:a2:41:13 -> 01:80:c2:00:00:00 STP Conf. Root = 8192/10/ec:e1:a9:df:6c:80 Cost = 22 Port = 0x8013
2019-06-15 11:50:16.853248 192.168.254.4 -> 192.168.254.3 UDP Source port: 3200 Destination port: 3200
2019-06-15 11:50:17.326253 192.168.254.1 -> 192.168.254.3 SSH Encrypted request packet len=52
2019-06-15 11:50:17.327313 192.168.254.3 -> 192.168.254.1 SSH Encrypted response packet len=1348
2019-06-15 11:50:17.377246 192.168.254.4 -> 239.255.70.83 UDP Source port: 7546 Destination port: 7546
2019-06-15 11:50:17.552215 192.168.254.1 -> 192.168.254.3 TCP 14139 > ssh [ACK] Seq=365 Ack=11277 Win=63546 Len=0
2019-06-15 11:50:17.661764 192.168.254.3 -> 192.168.254.4 UDP Source port: 3200 Destination port: 3200
2019-06-15 11:50:17.653242 192.168.254.4 -> 192.168.254.3 UDP Source port: 3200 Destination port: 3200
2019-06-15 11:50:17.872637 8c:60:4f:aa:c2:e1 -> 01:80:e7:00:00:0e LLDP Chassis : d = 8c:60:41:aa:c2:e1 Port Id = mgmt0 TTL = 120
2019-06-15 11:50:08.173056 192.168.256.3 -> 192.168.254.2 NTP NTP client
2019-06-15 11:50:08.173256 192.168.256.2 -> 192.168.254.3 NTP NTP server
```

A flapping link issue has been reported on the vPC keepalive link. A packet capture has been activated on the Cisco Nexus switch. What is the destination IP address of the vPC keepalive packets that are sent by the switch?

- A. 192.168.254.4
- B. 239.255.70.83
- C. 192.168.254.1
- D. 192.168.254.2

Answer: A

Explanation:

<https://www.cisco.com/c/en/us/td/docs/switches/datacenter/nexus3000/sw/interfaces/92x/b-cisco-nexus-3000-nx>

NEW QUESTION 63

An engineer must perform a backup operation of the Cisco UCS system. The backup must be transferred to a secure location using UDP and must contain information about VLANs, VSANs, and other policies. Also, the operations team requires the backup file to be in a human-readable format. Which configuration set meets these requirements?

- A. Type: System configuration Protocol: SCP
- B. Type: Logical configuration Protocol: TFTP
- C. Type: All configuration Protocol: FTP
- D. Type: Full state Protocol: SFTP

Answer: B

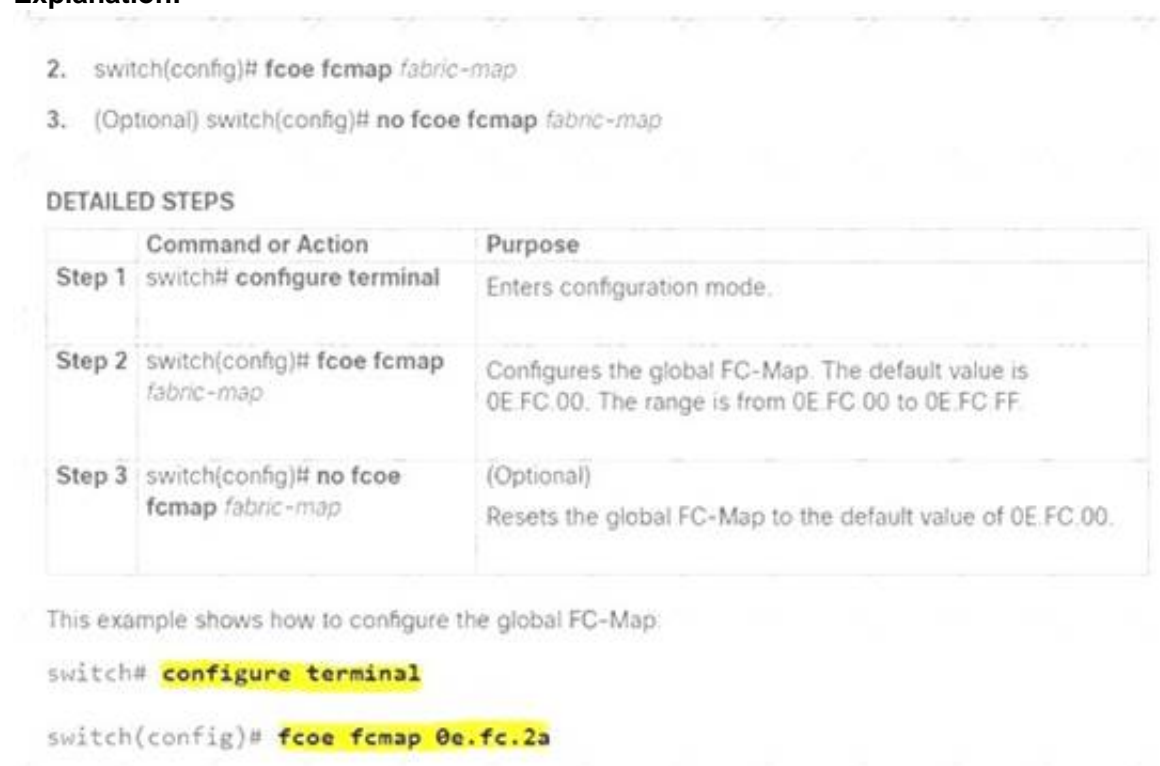
NEW QUESTION 68

A network engineer must prevent data corruption due to cross fabric communication in an FCoE environment. Which configuration must be applied to the Cisco Nexus Unified Switches to achieve this objective?

- A. Switch(config)#fcoe fcmmap 0e,fc,2a
- B. Switch(config-if)# no fcoe fcf-priority 0
- C. Switch(config-if) # shutdown lan
- D. Switch(config) # no fcoe fcf-priority

Answer: A

Explanation:



2. switch(config)# **fcoe fcmmap fabric-map**

3. (Optional) switch(config)# **no fcoe fcmmap fabric-map**

DETAILED STEPS		
	Command or Action	Purpose
Step 1	switch# configure terminal	Enters configuration mode.
Step 2	switch(config)# fcoe fcmmap fabric-map	Configures the global FC-Map. The default value is 0E.FC.00. The range is from 0E.FC.00 to 0E.FC.FF.
Step 3	switch(config)# no fcoe fcmmap fabric-map	(Optional) Resets the global FC-Map to the default value of 0E.FC.00.

This example shows how to configure the global FC-Map:

```
switch# configure terminal  
switch(config)# fcoe fcmmap 0e.fc.2a
```

https://www.cisco.com/c/en/us/td/docs/switches/datacenter/nexus5000/sw/fcoe/b_Cisco_Nexus_5000_Series_NX-OS_Fibre_Channel_over_Ethernet_Configuration_Guide/Cisco_Nexus_5000_Series_NX-OS_Fibre_Channel_over_Ethernet_Configuration_Guide_chapter3.html
You can prevent data corruption due to cross-fabric talk by configuring an FC-Map that identifies the Fibre Channel fabric for this Cisco Nexus device. When the FC-Map is configured, the switch discards the MAC addresses that are not part of the current fabric.
switch(config)# fcoe fcmmap fabric-map Configures the global FC-Map. The default value is 0E.FC.00. The range is from 0E.FC.00 to 0E.FC.FF.
https://www.cisco.com/c/en/us/td/docs/switches/datacenter/nexus5000/sw/fcoe/513_n1_1/b_Cisco_n5k_fcoe_co

NEW QUESTION 69

An engineer must implement an automation solution to allow the backup of the configuration of cisco Nexus series switches to a centralized location. The solution must:

- * Support the team-developed custom monitoring scripts that are packaged using RPM packaging that the framework must support.
- * Be developed from the underlying cisco Nexus operating system.
- * Have no impact on the operating system of the underlying switch if the resource contention occurs.
- * Use Python to expand the existing automation framework. Which solution meets these requirements?

- A. Guest Shell
- B. Bash Shell
- C. TCL Shell
- D. Vegas Shell

Answer: A

NEW QUESTION 73

An engineer must configure OSPF in the data center. The external routes have already been redistributed OSPF. The network must meet these criteria:

- * The data centre servers must reach services in the cloud and the services behind the redistributed routes.
- * The exit point toward the internet should be propagated only when there is a dynamically learned default route from the upstream router.

Which feature is required?

- A. Default-information originate

- B. Stubby area
- C. Totally stubby area
- D. Default-information originate always

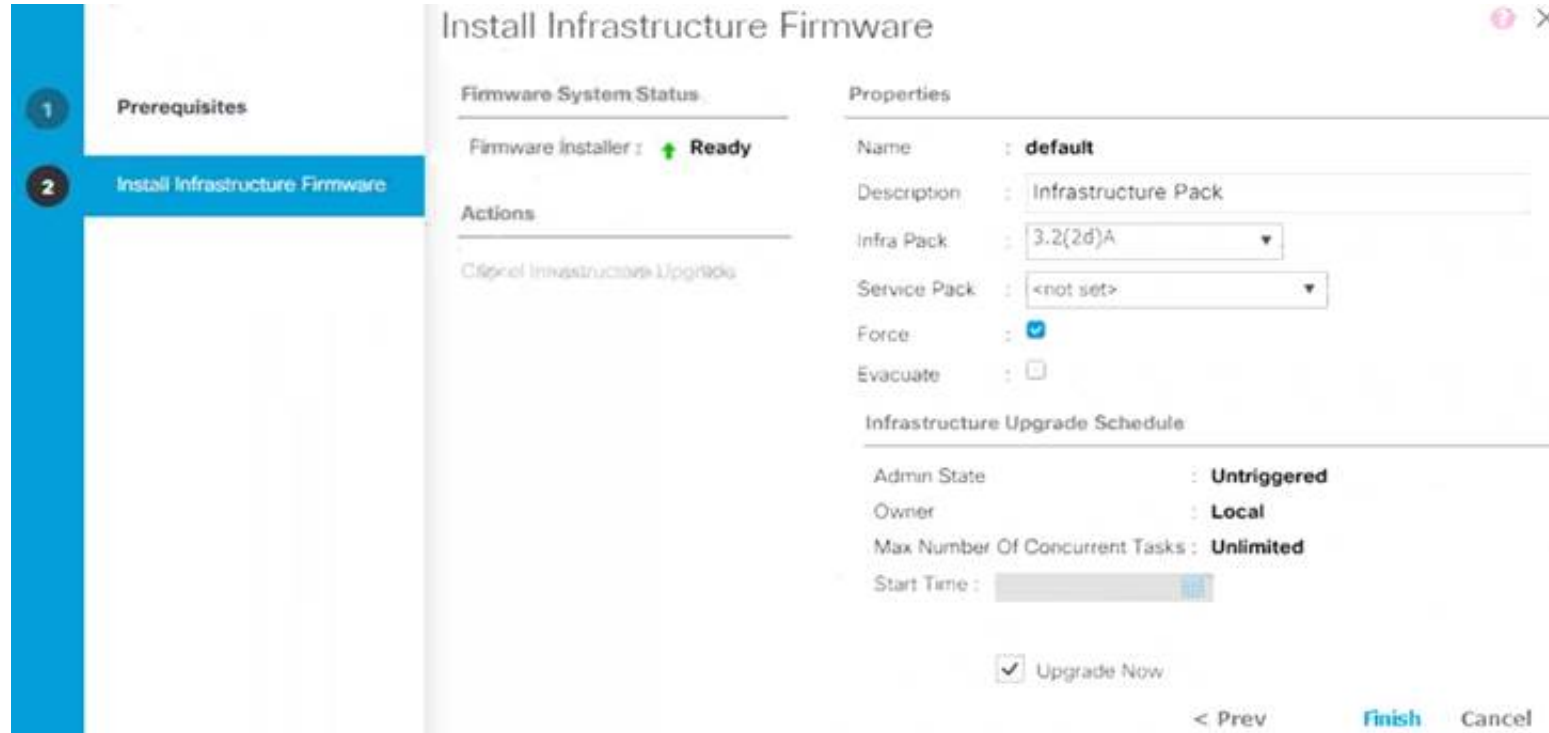
Answer: A

Explanation:

<https://learningnetwork.cisco.com/s/question/0D53i00000Kt544/defaultinformationoriginate-always>

NEW QUESTION 76

Refer to the exhibit.



Which two Cisco UCS components are upgraded as a result of the configuration? (Choose two.)

- A. adapters
- B. board controller
- C. IOMs
- D. BIOS
- E. Cisco UCS Manager

Answer: CE

Explanation:

https://www.cisco.com/c/en/us/td/docs/unified_computing/ucs/sw/firmware-mgmt/gui/2-2/b_GUI_Firmware_Management_22/b_GUI_Firmware_Management_22_chapter_0101.html

Infrastructure software bundle—This bundle is also called the A bundle. It contains the firmware images that the fabric interconnects, IO Modules, and Cisco UCS Manager require to function.

Board controller is a server component included in the server bundle not the infrastructure bundle Graphical user interface, text, application, letter Description automatically generated

Install Infrastructure Firmware

Install Infrastructure Firmware upgrades all infrastructure components in a Cisco UCS domain, including Cisco UCS Manager, and all fabric interconnects and I/O modules. All components are upgraded to the firmware version included in the selected Cisco UCS Infrastructure Software Bundle.

Install Infrastructure Firmware does not support a partial upgrade to only some infrastructure components in a Cisco UCS domain domain.

You can schedule an infrastructure upgrade for a specific time to accommodate a maintenance window. However, if an infrastructure upgrade is already in progress, you cannot schedule another infrastructure upgrade. You must wait until the current upgrade is complete before scheduling the next one.



Note

You can cancel an infrastructure firmware upgrade if it is scheduled to occur at a future time. However, you cannot cancel an infrastructure firmware upgrade after the upgrade has begun.

NEW QUESTION 78

An engineer must add a new VRF (DC DC) to the network that runs with Multiprotocol Border Gateway Protocol (MP-BGP) and EVPN.The requirement for the new VRF is to allow communication of network prefixes between PE1 and PE2. Which two sets of steps should be taken to complete the VRF configuration? (Choose two)



- A. Option A
- B. Option B
- C. Option C
- D. Option D
- E. Option E

Answer: DE

NEW QUESTION 79

Which two features are used to allow a nondisruptive upgrade for the ISSU process? (Choose two.)

- A. connectivity management processor
- B. nonstop forwarding
- C. graceful restart
- D. stateful switchover
- E. advanced services license

Answer: BD

NEW QUESTION 82

A network engineer is configuring the Cisco UCS service profile template with Ansible using this code.

```
hostname: 192.168.10.23
username: cisco
password: f718c4329405088301f6247ff982
name: DCE-CTRL
template_type: updating-template
uuid_pool: UUID-POOL
storage_profile: DCE-StgProf
maintenance_policy: default
server_pool: Container-Pool
host_firmware_package: 4.1(1a)
bios_policy: Docker
```

Which attribute must be used to apply the iSCSI initiator identifiers to all iSCSI vNICs for the service profiles derived from the service template?

- A. san_connectivity_policy
- B. iqn_pool
- C. boot_policy
- D. lan_connectivity_policy

Answer: B

NEW QUESTION 87

The FCoE technology is used in a data center and the MDS switches are configured as Fibre Channel Forwarders. What configuration should be applied to an MDS switch in order to be used as the best switch to connect by the CNAs in the fabric?

- A. fcoe fcf-priority 1024
- B. fcoe fcf-priority 512
- C. fcoe fcf-priority 0
- D. no fcoe fcf-priority

Answer: C

Explanation:

https://www.cisco.com/c/en/us/td/docs/switches/datacenter/nexus5000/sw/fcoe/521n11/b_5k_FCoE_Config_521N11_chapter_011.pdf

NEW QUESTION 89

A network administrator is using the Cisco ESA with Cisco AMP to upload files to the cloud for analysis. The network is congested and is affecting communication. How will the Cisco ESA handle any files which need analysis?

- A. Cisco AMP calculates the SHA-256 fingerprint, caches it, and periodically attempts the upload.
- B. The Cisco ESA immediately makes another attempt to upload the file.
- C. The file is queued for upload when connectivity is restored.
- D. The file upload is abandoned.

Answer: A

NEW QUESTION 92

An engineer is implementing traffic monitoring for a server vNIC that is configured with fabric failover enabled. The requirement is for the traffic to be sent to an analyzer, even during a failure of one of the fabric interconnects. The analyzer is connected to unconfigured Ethernet ports on both fabric interconnects. Which configuration accomplishes this task?

- A. Create two traffic monitoring sessions with different names, one per fabric. Connect the analyzer connected to FI-B as the destination for both monitoring sessions.
- B. Create two traffic monitoring sessions with the same name, one per fabric. Connect an analyzer on each FI as the destination for the monitoring session local to that FI.
- C. Create two traffic monitoring sessions with the same name, one per fabric. Connect the analyzer connected to FI-A as the destination for both monitoring sessions.
- D. Create two traffic monitoring sessions with different names, one per fabric. Connect an analyzer on each FI as the destination for the monitoring session local to the FI

Answer: A

NEW QUESTION 97

Refer to the exhibit

```
switch1#show run interface Vlan 10

interface Vlan10
  description Service Datacenter-Rack-A
  ip address 209.165.200.225 255.255.255.224
!
end

switch1#
```

An engineer must mirror the traffic on a switch. The engineer locates the server port that requires monitoring on switch1, but the packet sniffer is on switch2. The engineer must configure the source IP address on switch1. Which command accomplishes this goal?

- A. monitor session 10 type erspan-source
- B. monitor erspan origin ip-address 209.165.200.225
- C. source ip 209.165.200.225
- D. source interface vbn512

Answer: B

NEW QUESTION 102

A Cisco MDS 9000 series storage Switch has reloaded unexpectedly. Where does the engineer look for the latest core dump file?

- A. /mnt/core
- B. /mnt/pss
- C. /mnt/logs
- D. /mnt/recovery

Answer: B

Explanation:

Graphical user interface, text, application, email Description automatically generated

Saving Cores

You can save cores (from the active supervisor module, the standby supervisor module, or any switching module) to an external CompactFlash (slot 0) or to a TFTP server in one of two ways:

- On demand—Copies a single file based on the provided process ID.
- Periodically—Copies core files periodically as configured by the user.

A new scheme overwrites any previously issued scheme. For example, if you perform another core log copy task, the cores are periodically saved to the new location or file.

Saving the Last Core to Bootflash

This last core dump is automatically saved to bootflash in the `/mnt/pss/` partition before the switchover or reboot occurs. Three minutes after the supervisor module reboots, the saved last core is restored from the flash partition (`/mnt/pss`) back to its original RAM location. This restoration is a background process and is not visible to the user.

https://www.cisco.com/c/en/us/td/docs/switches/datacenter/mds9000/sw/6_2/configuration/guides/system_management/nx-os/sysmgmt_cli_6-x/sys.html
https://www.cisco.com/c/en/us/td/docs/switches/datacenter/mds9000/sw/6_2/configuration/guides/system_management/nx-os/sysmgmt_cli_6-x/sys.html#37039

NEW QUESTION 106

An engineer performs a Firmware Auto Install upgrade through the Cisco UCS Manager. Which two Cisco UCS components are upgraded in the Install Server Firmware stage? (Choose two)

- A. Cisco UCS C-Series Rack-Mount Server
- B. I/O Modules
- C. Cisco UCS Manager
- D. Cisco UCS B-Series Blade Server
- E. Fabric Interconnects

Answer: BE

NEW QUESTION 109

Drag and drop the mechanisms to collect data from a network from the left onto their characteristics on the right

CLI-based scripts	Polling can take 5-10 minutes.
SNMP	Unstructured and susceptible to change and scripts failure.
syslog	It sends data from the device to a specific endpoint, for instance, JSON or by using Google protocol buffers.
telemetry	It pushes messages in the format "seq no:timestamp: %facility-severity MNEMONIC:description" and has limits in scale and efficiency.

- A. Mastered
- B. Not Mastered

Answer: A

Explanation:

Table Description automatically generated with low confidence

NEW QUESTION 114

The Cisco Nexus 5600 Series Switch experiences occasional packet drops on interface ethernet 1/16. An engineer wants to implement a SPAN session to investigate the issue further. The network analyzer to which the packets must be directed is located on interface 1/3. The analyzer is limited on disk space available for traffic capture, so the Nexus switch should send only the relevant data. Which two command sets configure the SPAN session that meets these requirements? (Choose two.)

- ☒ interface ethernet 1/3
switchport monitor
- ☐ monitor session 2
destination interface ethernet 1/3
span interface ethernet 1/16
- ☐ interface ethernet 1/3
switchport span
- ☒ span session 2
type SPAN-on-DROP
destination interface ethernet 1/3
source interface ethernet 1/16
- ☒ monitor session 2 type SPAN-on-DROP
destination interface ethernet 1/3
source interface ethernet 1/16

- A. Option A
- B. Option B
- C. Option C
- D. Option D
- E. Option E

Answer: AE

Explanation:

<https://www.cisco.com/c/en/us/products/collateral/switches/nexus-5000-series-switches/white-paper-c11-73302> The information to be sent is regarding dropped packets only.

This configuration creates a SPAN session with type SPAN-on-DROP. In the following example, the source interface, where congestion may be present, is port e3/1. The destination port is e3/2, which must be in switchport monitor mode.

```
switch(config)# monitor session <session_number> type SPAN-on-DROP
switch(config-SPAN-on-DROP)# source interface e3/1
switch(config-SPAN-on-DROP)# destination interface e3/2
```

NEW QUESTION 116

An engineer configures the properties of a cisco UCS cisco integrated Management controller network adapter for a standalone cisco C-Series server. The Fallback Timeout in the vNIC was set to 600. When the failure occurs. The secondary must be used and then fallback when the primary interface becomes available again. Which action be taken to meet these requirements?

- A. Set default VLAN on the adapters.
- B. Increase Cos to 6.
- C. Disable VNTAG mode.
- D. Enable Uplink failover.

Answer: D

Explanation:

Enable Uplink Failover check box - Check this box if traffic on this vNIC should fail over to the secondary interface if there are communication problems. VNTAG mode is required for this option.

Failback timeout field - After a vNIC has started using its secondary interface, this setting controls how long the primary interface must be available before the system resumes using the primary interface for the vNIC. Enter a number of seconds between 0 and 600. VNTAG mode is required for this option.

https://www.cisco.com/en/US/docs/unified_computing/ucs/c/sw/gui/config/guide/1.5/b_Cisco_UCS_C-series_G

NEW QUESTION 121

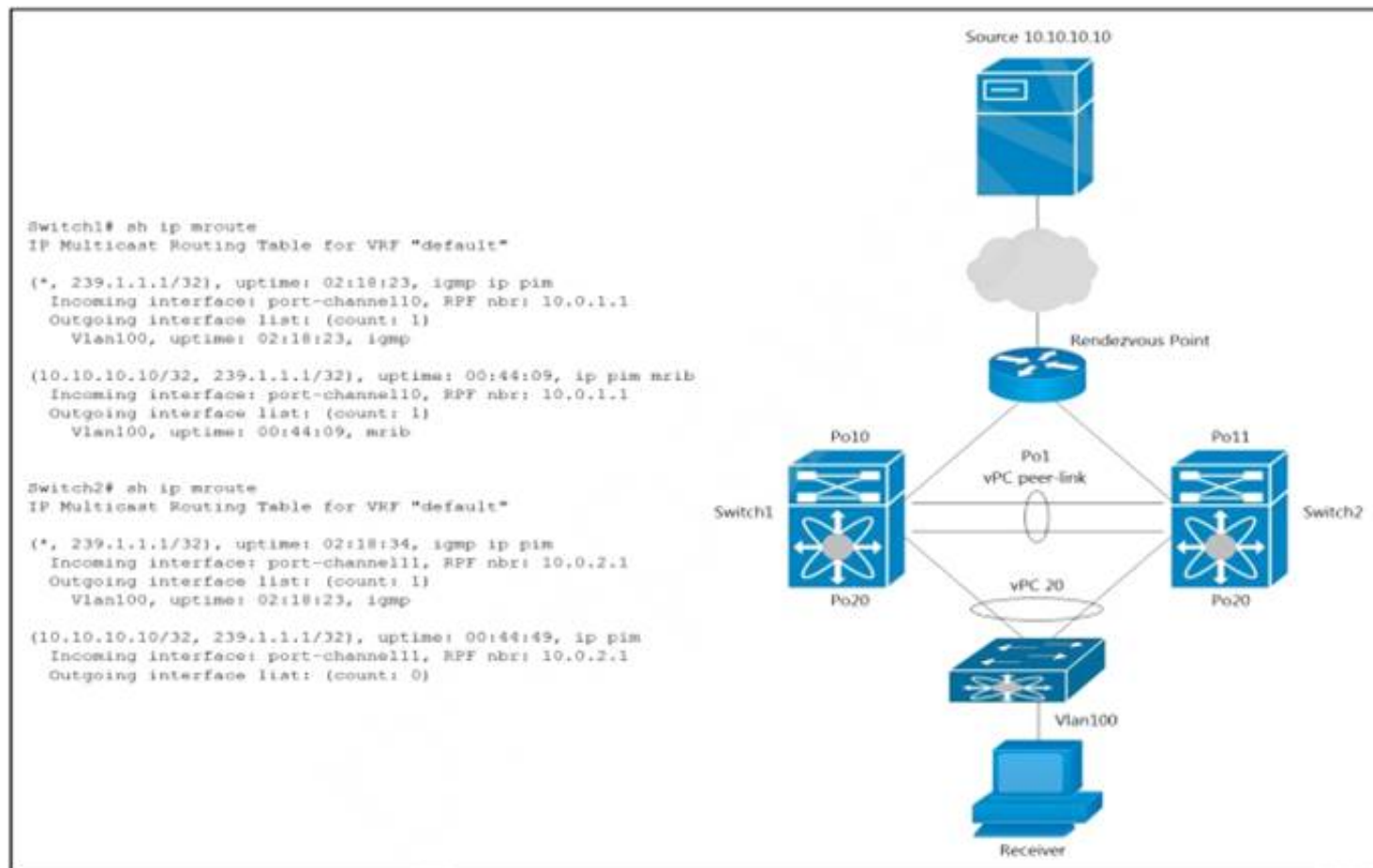
What is a benefit of using Cisco Tetration?

- A. It collects telemetry data from servers and then uses software sensors to analyze flow information.
- B. It collects near-real time data from servers and inventories the software packages that exist on servers.
- C. It collects policy compliance data and process details.
- D. It collects enforcement data from servers and collects interpacket variation.

Answer: A

NEW QUESTION 122

Refer to the exhibit.



A host with a source address 10.10.10.10 sends traffic to multicast group 239.1.1.1. How do the vPC switches forward the multicast traffic?

- A. If multicast traffic is received on Switch1 over the vPC peer-link, the traffic is dropped
- B. If multicast traffic is received on Po10 Switch1, the traffic is forwarded out on Po1 and Po20
- C. If multicast traffic is received on Po11 Switch2, the traffic is forwarded out only on Po20
- D. If multicast traffic is received on Po11 Switch2, the traffic is dropped.

Answer: D

Explanation:

<https://www.cisco.com/c/en/us/support/docs/ip/multicast/214140-multicast-forwarding-in-vpc-based-on-loc.htm>

NEW QUESTION 123

Refer to the exhibit.

```
show install all impact epld bootflash:n9000-epld.6.1.2.I3.1.img
```

What is the outcome of this command when the EPLD is updated on a Cisco Nexus 9000 series switch?

- A. displays the compatibility of the EPLD upgrade and the image in the bootflash
- B. shows a simulated upgrade of the EPLD
- C. upgrades the EPLD on the switch disruptively
- D. displays the impact of the upgrade on the operation of the switch

Answer: D

Explanation:

You can use the show install impact epld bootflash: command to determine whether the EPLDs can be upgraded for all the modules or for specific modules on a switch. This command indicates the current EPLD images, new EPLD images, and whether the upgrades would be disruptive to switch operations. <https://www.cisco.com/c/en/us/td/docs/switches/datacenter/nexus9000/sw/6-x/epld/n9k-epld-rn-61.html>

NEW QUESTION 127

Which protocol does Cisco Hyperflex use to share data among nodes in a VMware vSphere environment?

- A. CIFS
- B. FCoE
- C. SMB
- D. NFS

Answer: D

NEW QUESTION 132

A content delivery network sends video traffic to a multicast distribution device where the receiver requests the traffic from the multicast distribution device through an IGMP join message. When the traffic reaches the multicast routing device from a CDN the switching network populates the multicast routing table in the group (S, G) and the multicast distribution device sends the required traffic back to the receiver. Which feature is used to send back the traffic from the streamer to the receiver in the group (S, G)?

- A. RP
- B. IGMP
- C. Reverse Path Forwarding
- D. Source Specific Multicast

Answer: C

NEW QUESTION 137

Which feature is supported with an In-Service Software Upgrade on a Cisco Nexus 9000 Series Switch?

- A. configuration changes during an upgrade
- B. nondisruptive upgrades via nonstop forwarding
- C. zero downtime downgrades via dual supervisor modules
- D. upgrades to Individual modules and line cards

Answer: B

NEW QUESTION 140

An engineer must implement private VLANs for a group of Cisco UCS 8-Series servers. The primary VLAN is present, But the secondary VLAN must Be added to Both fabrics. Which configuration set accomplishes this task?

- ☐ UCS-A# scope eth-uplink
 UCS-A /eth-uplink # create vlan vian1981 1981
 UCS-A /eth-uplink/vlan* # set sharing none
- ☐ UCS-A# scope eth-uplink
 UCS-A /eth-uplink # create vlan vian1981 1981
 UCS-A /eth-uplink/vlan* # set sharing isolated
- ☐ UCS-A# scope eth-uplink
 UCS-A /eth-uplink # scope fabric a
 UCS-A /eth-uplink/fabric # create vlan vian1981 1981
 UCS-A /eth-uplink/fabric/vlan* # set sharing private
- ☒ UCS-A# scope eth-uplink
 UCS-A /eth-uplink # scope fabric a
 UCS-A /eth-uplink/fabric # create vlan vian1981 1981
 UCS-A /eth-uplink/fabric/vlan* # set sharing secondary

- A. Option A
- B. Option B
- C. Option C
- D. Option D

Answer: B

NEW QUESTION 145

An engineer must perform a nondisruptive software upgrade on a dual supervisor Cisco Nexus 7000 series switch. What is the cause of the upgrade being disruptive?

- A. The show install all impact command is not issued before the upgrade
- B. The kickstart image is installed by using the Install all kickstart image system image command
- C. Attempt to simultaneously upgrade more than three cards
- D. Change to the configuration settings or the network connections during the upgrade process

Answer: D

NEW QUESTION 146

Refer to the exhibit.

```
UCS-A# scope adapter 1/1/1
UCS-A# /chassis/server/adapter # show image
Name                               Type      Version    State
-----
ucs-m81kr-vic.2.2.1b.bin           Adapter   2.2(1b)    Active

UCS-A# /chassis/server/adapter # update firmware 2.2(1b)
UCS-A# /chassis/server/adapter* # activate firmware 2.2(1b)
set-startup-only
UCS-A# /chassis/server/adapter* # commit-buffer
UCS-A# /chassis/server/adapter #
```

What is the result of this series of commands?

- A. It reboots the server immediately.
- B. It verifies the firmware update on the server.
- C. It activates the firmware on the next adapter boot.
- D. It updates the firmware on adapter 1/1/1 immediately.

Answer: C

Explanation:

https://www.cisco.com/c/en/us/td/docs/unified_computing/ucs/ucs-manager/CLI-User-Guides/Firmware-Mgmt/ Graphical user interface, text, application, email Description automatically generated

Step 6	UCS-A /chassis/server/adapter # activate firmware version-num [set- startup-only]	Activates the selected firmware version on the adapter. Use the set-startup-only keyword if you want to move the activated firmware into the pending-next-boot state and not immediately reboot the server. The activated firmware does not become the running version of firmware on the adapter until the server is rebooted. You cannot use the set-startup-only keyword for an adapter in the host firmware package.
--------	--	---

NEW QUESTION 147

An engineer must optimize ARP responses and reduce unnecessary ARP broadcasts over the VXLAN/EVPN fabric. Which action accomplishes these tasks?

- A. Configure ip proxy-arp under the VLAN SVI associated with the VXLAN VNI.
- B. Configure ip proxy-arp within the VXLAN VNI configuration under the VTEP NVE interface.
- C. Configure suppress-arp within the VXLAN VNI configuration under the VTEP NVE interface.
- D. Configure suppress-arp under the VLAN SVI associated with the VXLAN VNI.

Answer: C

NEW QUESTION 148

A Cisco ACI engineer must configure an access port on a Cisco ACI leaf switch. The access policy should be configured so that it supports L3out connectivity concurrently with several EPGs that are mapped to this interface with the static port method. How should the access policy be configured?

- A. by linking the interface policy group to multiple Attachable Access Entity Profiles
- B. with a single Attachable Access Entity Profile that is linked to the corresponding routed domain and physical domain
- C. with two interface policy groups that are linked to the same interface profile port selector
- D. by mapping a single physical domain, mapped to the L3out and EPG interfaces

Answer: D

NEW QUESTION 150

The VMM domain is integrated between Cisco APICs and vCenter using a distributed vSwitch. The traffic must be blocked between a subset of endpoints in an EPG based on specific VM attributes and the rest of the VMs in that EPG. Which set of actions blocks this traffic?

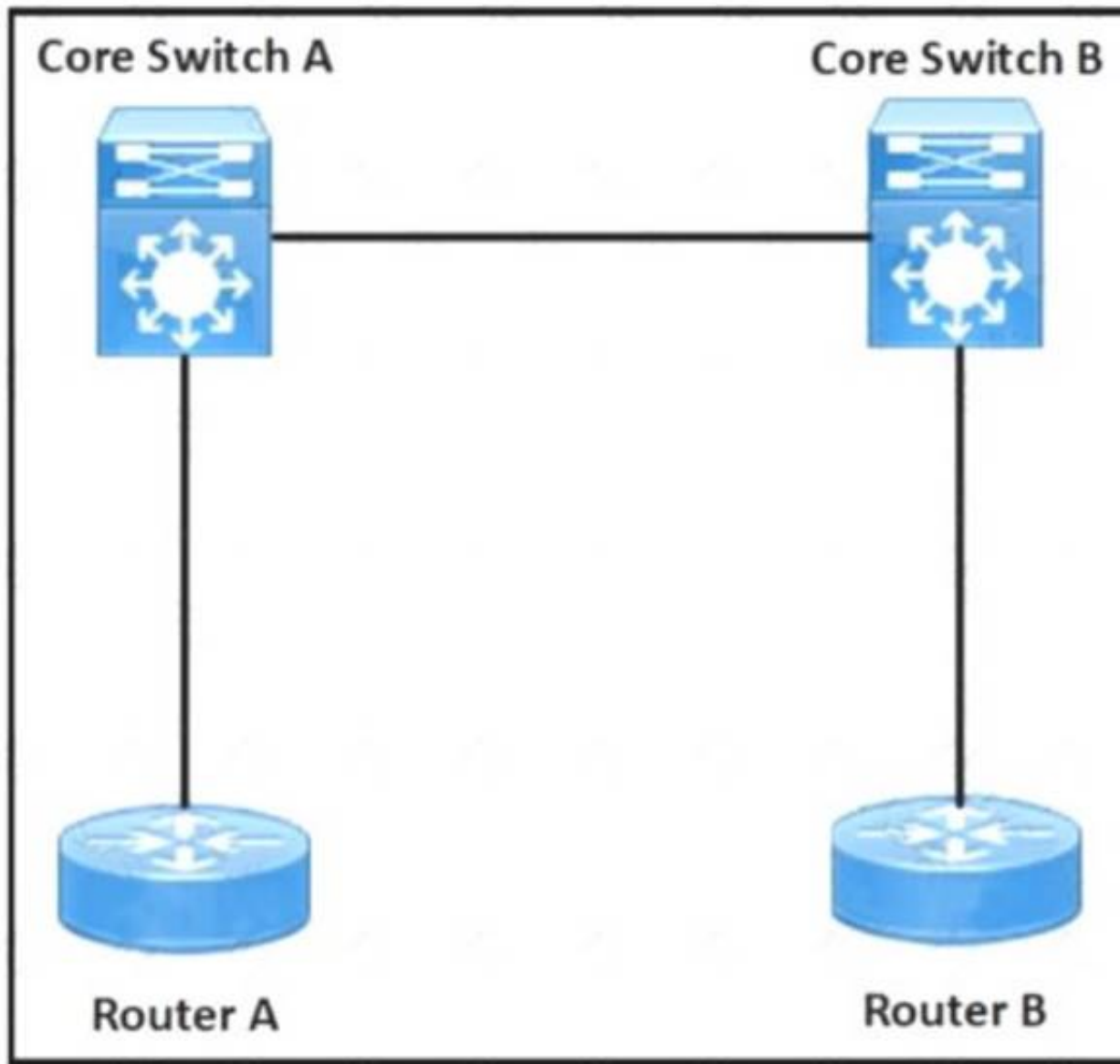
- ☒ 1. Set Allow Microsegmentation under the EPG VMM Domain Association to "True"
2. Set Intra-EPG Isolation to "Enforced" for the EPG
3. Set Intra-EPG Isolation to "Enforced" for the uSeg EPG
- ☐ 1. Set Allow Microsegmentation under the EPG VMM Domain Association to "True"
2. Set Intra-EPG Isolation to "Unenforced" for the EPG
3. Set Intra-EPG Isolation to "Unenforced" for the uSeg EPG
- ☐ 1. Set Allow Microsegmentation under the EPG VMM Domain Association to "False"
2. Set Intra-EPG Isolation to "Unenforced" for the EPG
3. Set Intra-EPG Isolation to "Enforced" for the uSeg EPG
- ☐ 1. Set Allow Microsegmentation under the EPG VMM Domain Association to "True"
2. Set Intra-EPG Isolation to "Enforced" for the EPG
3. Set Intra-EPG Isolation to "Unenforced" for the uSeg EPG

- A. Option A
- B. Option B
- C. Option C
- D. Option D

Answer: A

NEW QUESTION 151

Refer to the exhibit.



```
feature vn-segment-vlan-based
feature nv overlay

vlan 10
  vn-segment 10010

Interface Loopback0
  ip address 10.10.0.1/32
  ip pim sparse mode
```

A network engineer configures the VXLAN between the routers in a data center. The VLAN 10 must be extended between routers A and B. The initial VXLAN configuration is completed on Router A. Which configuration finishes the VXLAN configuration on Router A?

- A.
- ```
vrf context tenant1
vni 10010

Interface nve1
source-interface lo0
no shutdown
member vni 10010 interface 10.10.0.1
```
- B.
- ```
system bridge-domain 10
member vni 10010
interface nve1
no shutdown
source-interface lo0
```
- C.
- ```
Interface nve1
no shutdown
source-interface lo0
vni 10100 l2
rd auto
```
- D.
- ```
Interface nve1
no shutdown
source-interface lo0
member vni 10010 mcast-group 231.1.1.1
```


Answer: C

NEW QUESTION 152

An engineer must configure multiple EPGs on a single access port in a large Cisco ACI fabric without using VMM integration. The relevant access policies and tenant policies have been created. A single AAEP is used to configure the access port in the fabric. Which two additional steps must be taken to complete the configuration? (Choose two.)

- A. A contract must be defined between the EPGs
- B. The EPGs must be linked to the correct physical domain
- C. The EPGs must link directly to the corresponding AAEP
- D. The corresponding bridge domains must be configured in legacy mode
- E. The EPGs must be configured as static ports

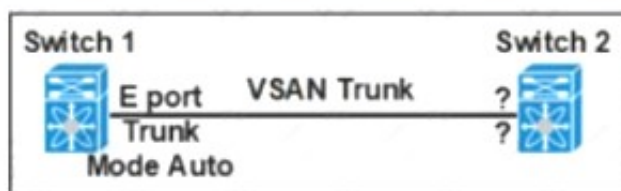
Answer: BE

Explanation:

Attach EPG to Physical Domain (to AAEP through it) and add static ports to EPG
 Contract is needed to allow communication between two EPGs, or EPG and L3out or between two L3out

NEW QUESTION 154

Refer to the exhibit.



Which feature set must be used to configure on switch 2 to establish a VSAN trunk between switch 1 and switch 2?

- ☒ • E Port
• Trunk Mode On
- ☐ • F Port
• Trunk Mode Passive
- ☐ • N Port
• Trunk Mode Active
- ☒ • NP Port
• Trunk Mode Auto

- A. Option A
- B. Option B
- C. Option C
- D. Option D

Answer: A

NEW QUESTION 158

An engineer must recover the Cisco UCS system. The full backup is available on a backup SCP server. Which set of actions recovers the configuration of the Cisco UCS Manager?

- ☐ Copy the backup file to a USB drive.
Copy the running-config.
- ☐ Create a scheduled restore job.
Reboot the UCS Manager.
- ☒ Create an import-config task.
Set the action to Replace.
- ☐ Factory reset the fabric interconnect.
Select the Restore feature.

- A. Option A
- B. Option B
- C. Option C
- D. Option D

Answer: C

NEW QUESTION 159

A new user with access privileges in the Finance department moves to a new Admin department. The user must have access privileges to the Admin department data and applications inside the Cisco UCS Manager. Which set of changes must be implemented in Cisco UCS Central for the user to acquire the privileges?

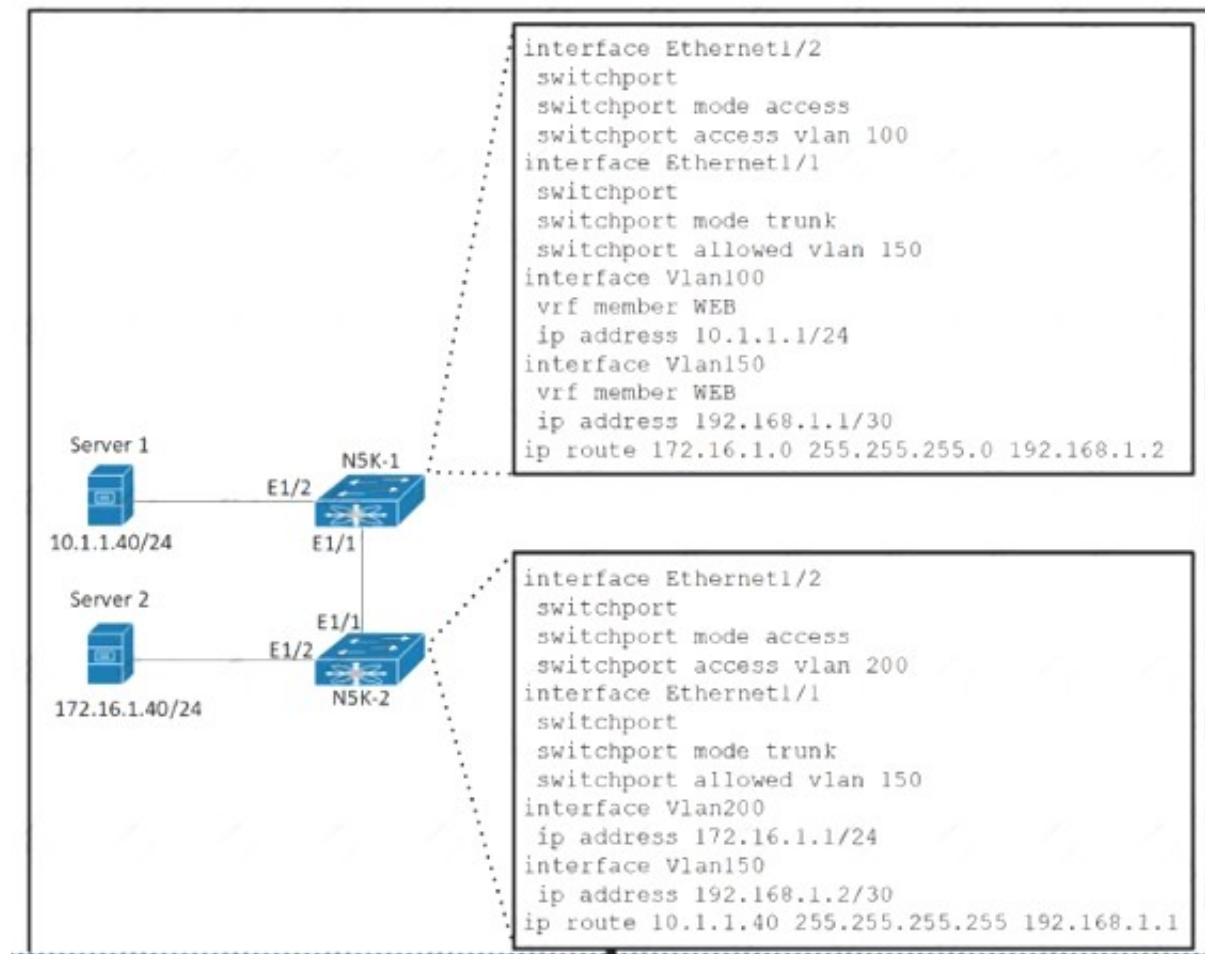
- A. Create an Admin user account and remove the authentication service for the Finance privileges.

- B. Disable the Finance user account and add the authentication service for the Admin privileges.
- C. Create a new locale Admin and add the Admin department to the Admin local
- D. Delete the old locale
- E. Finance and remove the Finance department from the Finance locale.

Answer: C

NEW QUESTION 163

Refer to the exhibit.



The gateway of Server 1 is in the VLAN 100 SVI on N5K-1 and the gateway of Server 2 is in the VLAN 200 SVI on N5K-2. Server 1 must connect to Server 2 using unidirectional traffic. Which action accomplishes this requirement?

- A. Add VLAN 100 and 200 to the allowed VLANs list on the Ethernet 1/1 interface on N5K-1.
- B. Assign VRF WEB membership to interfaces VLAN 150 and 200 on N5K-2.
- C. Configure access VLAN 100 on interface Ethernet 1/2 on N5K-2.
- D. Create a static route in VRF WEB for the subnet of Server 2 on N5K-1

Answer: B

NEW QUESTION 165

An engineer changed a configuration and must perform a rollback. Which statement applies to a Cisco Nexus 5600 Series switch?

- A. Errors are skipped when an atomic rollback type is triggered.
- B. A user who is assigned to the network-operator user role can perform a rollback.
- C. The configuration rollback functionality is disabled when FCoE is enabled.
- D. A system checkpoint is generated automatically when the running configuration is saved to NVRAM.

Answer: C

Explanation:

https://www.cisco.com/c/en/us/td/docs/switches/datacenter/nexus5000/sw/system_management/503_n1_1/cisco_n5k_system_mgmt_cg_rel_503_n1_1_chapter11.pdf
https://www.google.com/url?sa=t&source=web&rct=j&url=https://www.cisco.com/c/en/us/td/docs/switches/datacenter/nexus5000/sw/system_management/503_n1_1/cisco_n5k_system_mgmt_cg_rel_503_n1_1_chapter11.pdf&ved=2ahUKEwjQ8ubTuK3xAhWm3jgGHZ9gB0oQFjAAegQIBRAC&usg=AOvVaw2j0nnvXiChAoVoovX2Qx0g

NEW QUESTION 169

A host EPG Client wants to talk to a webserver in EPG Web. A contract with default settings is defined between EPG Client and EPG Web, which allows TCP communication initiated by the client toward the webserver with TCP destination port 80. Which statement is true?

- A. If EPG Web is made a preferred group member, a contract between EPG Client and EPG Web is no longer required for the host in EPG Client to reach the webserver in EPG Web.
- B. If vzAny is configured to consume and provide a "deny all" contract, traffic between EPG Client and EPG Web is no longer allowed.
- C. The host in EPG Client is allowed to connect to TCP destination port 80 on the webserver in EPG Web. The webserver will not be allowed to initiate a separate TCP connection to a host port with TCP source port 80.
- D. The host in EPG Client is allowed to connect to TCP destination port 80 on the webserver in EPG Web. The webserver is allowed to initiate a separate TCP connection to a host port with TCP source port 80.

Answer: D

Explanation:

Apply Both Direction and Reverse Filter Port in the subject for the filter. These two options are by default enabled...This means that if the provider EPG initiates traffic toward the consumer EPG, the Cisco ACI fabric allows it for any destination ports if the source port is 80.

https://www.cisco.com/c/en/us/td/docs/switches/datacenter/aci/apic/sw/1-x/Operating_ACI/guide/

[b_Cisco_Operating_ACI/b_Cisco_Operating_ACI_chapter_01000.html](#) Reverse filter and apply in both directions is default.

If a filter allows traffic from any consumer port to a provider port (e.g. 8888), if reverse port filtering is enabled and the contract is applied both directions (say for TCP traffic), either the consumer or the provider can initiate communication. The provider could open up a TCP socket to the consumer using port 8888, whether the provider or consumer sent traffic first. https://www.cisco.com/c/en/us/td/docs/switches/datacenter/aci/apic/sw/1-x/Operating_ACI/guide/

[b_Cisco_Operating_ACI/b_Cisco_Operating_ACI_chapter_01000.html](#)

NEW QUESTION 173

Which two actions should be taken before an upgrade is started on a Cisco MDS switch? (Choose two.)

- A. check the impact of the upgrade using the show install all impact command
- B. disable Cisco Fabric Services
- C. back up the configuration
- D. free up space on the USB3 device by deleting old Cisco NX-OS image files
- E. make the primary supervisor the active supervisor

Answer: AC

Explanation:

https://www.cisco.com/c/en/us/td/docs/switches/datacenter/mds9000/sw/5_2/upgrade/guides/nx-os/upgrade.html

NEW QUESTION 178

A network engineer must download a firmware image from a remote location to a Cisco UCS Fabric Interconnect. The software bundle is over 232 MB in size. The file transfer must use encryption and authentication Which protocol must be used to accomplish this goal?

- A. RDP
- B. HTTPS
- C. SCP
- D. TFTP

Answer: C

NEW QUESTION 182

An engineer must perform an initial configuration of VXLAN Tunnel End-Point functionality on the Cisco Nexus 9000 Series platform All the necessary features are already enabled on the switch Which configuration set must be used to accomplish this goal?

- ☒ NX9K(config)# interface loopback0
NX9K(config-if)# ip address 10.10.10.11/32

NX9K(config)# interface overlay0
NX9K(config-if-overlay)# source-interface loopback0
- ☐ NX9K(config)# interface VLAN10
NX9K(config-if-nve)# source-interface loopback0
- ☐ NX9K(config)# interface loopback0
NX9K(config-if)# ip address 10.10.10.11/32

NX9K(config)# interface tunnel1
NX9K(config-if)# tunnel source loopback0
- ☐ NX9K(config)# interface ethernet1/1
NX9K(config-if)# ip unnumbered loopback0
- ☐ NX9K(config)# interface loopback0
NX9K(config-if)# ip address 10.10.10.11/32

NX9K(config)# interface nve1
NX9K(config-if-nve)# source-interface loopback0
- ☐ NX9K(config)# interface ethernet1/1
NX9K(config-if)# ip unnumbered loopback0
- ☐ NX9K(config)# interface loopback0
NX9K(config-if)# ip address 10.10.10.11/32

NX9K(config)# interface VLAN10
NX9K(config-if)# ip unnumbered loopback0
- ☐ NX9K(config)# interface nve1
NX9K(config-if-nve)# source-interface loopback0

- A. Option A
- B. Option B
- C. Option C
- D. Option D

Answer: D

NEW QUESTION 187

An engineer must ensure fabric redundancy when implementing NPV mode on a Cisco MDS 9000 Series Switch. Which action enables fabric redundancy?

- A. Connect the NPV devices to multiple upstream switches.
- B. Add a port channel to upstream switches.
- C. Configure the NPV devices to use on external FLOGI database.
- D. Use TE ports to connect to upstream switches.

Answer: B

NEW QUESTION 191

An engineer must configuration a backup and restore of Cisco UCS Manager during the weekend maintenance windows. The configuration must be restored to its original state on Monday morning. The end users can make changes only to the Service Profile configuration. Which set of actions meets these requirements?

- A. Schedule a system backup to run at the start of every weekend and manually import the backup on Monday morning.
- B. Schedule a system backup to run at the start of every weekend and schedule the import of the backup to run on Monday morning
- C. Schedule a logical backup to run at the start of every weekend and manually import the backup on Monday morning.
- D. Schedule a logical backup to run at the start of every weekend and schedule the import of the backup to run on Monday morning.

Answer: B

NEW QUESTION 192

An engineer implements an ACI fabric and must implement microsegmentation of endpoints within the same IP subnet using a network-based attribute. The attribute mapping must allow IP subnet independence. Which attribute must be selected?

- A. MAC address
- B. Custom
- C. Tag
- D. IP

Answer: D

Explanation:

If you want to use a network-based attribute and classify IP addresses in the same subnet, you must use the MAC-based network attribute. IP-based microsegmented EPGs do not support classification for IP addresses in the same subnet.

https://www.cisco.com/c/en/us/td/docs/switches/datacenter/aci/apic/sw/3-x/virtualization/b_ACI_Virtualization_

NEW QUESTION 194

Which two statements about the process of upgrading an EPLD on a Cisco MDS 9000 series Switch are correct? (Choose two.)

- A. The EPLDs for all the modules on a switch must be upgraded at the same time.
- B. EPLD upgrades can be completed without powering down the module during the upgrade.
- C. EPLDs can be upgraded only to the latest EPLD image.
- D. EPLDs can be upgraded without replacing the hardware.
- E. An upgrade verification identifies the impact of each EPLD upgrade.

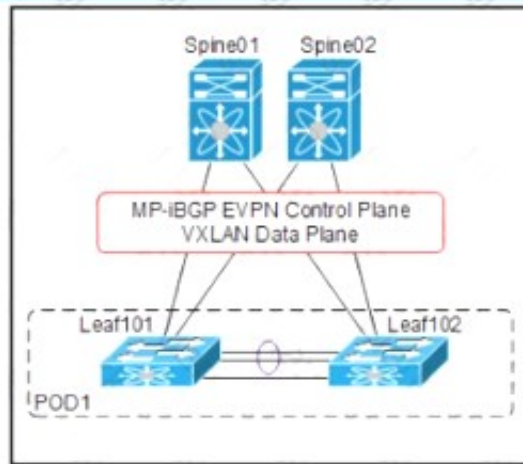
Answer: DE

Explanation:

https://www.cisco.com/c/en/us/td/docs/switches/datacenter/mds9000/sw/7_3/upgrade/upgrade.html

NEW QUESTION 199

Refer to the exhibit.



```
SPINE-01#show run pim
ip pim rp-address 10.255.0.100 group-list 225.0.0.0/8
ip pim bsr rp-candidate loopback1 group-list 225.0.0.0/8
ip pim ssm range 232.0.0.0/8
ip pim anycast-rp 10.255.0.100 10.10.0.1
ip pim anycast-rp 10.255.0.100 10.10.0.2
!
!
SPINE-01#show run interface loopback1
interface loopback1
ip router ospf 1 area 0.0.0.0
ip pim sparse-mode
```

An engineer must implement VXLAN with anycast gateway. To accomplish this, an engineer must set up PIM Source-Specific Multicast for host reachability. Which IP address must be applied to interface loopback1 to accomplish this goal?

- A. 255.0.0.1/8
- B. 255.0.100
- C. 10.10.0.1/32
- D. 10.10.0.2/32

Answer: B

NEW QUESTION 204

Refer to the exhibit.

```
1.130599 192.168.254.1 -> 192.168.254.13 TCP 60 29652 > ssh [ACK] Seq=1 Ack=53
Win=32449 Len=0
1.136261 00:8e:73:a2:41:0e -> Spanning-tree-(for-bridges)_00 STP 60 Conf. Root =
8192/10/ec:e1:a9:df:6c:80 Cost = 22 Port = 0x800e
1.373417 192.168.254.13 -> 192.168.254.1 SSH 106 Encrypted response packet len=52
1.570377 192.168.254.1 -> 192.168.254.13 TCP 60 29652 > ssh [ACK] Seq=1 Ack=105
Win=32786 Len=0
1.815558 192.168.254.13 -> 192.168.254.1 SSH 106 Encrypted response packet len=52
2.021840 192.168.254.1 -> 192.168.254.13 TCP 60 29652 > ssh [ACK] Seq=1 Ack=157
Win=32773 Len=0
2.525173 192.168.254.13 -> 192.168.254.1 SSH 106 Encrypted response packet len=52
2.731382 192.168.254.1 -> 192.168.254.13 TCP 60 29652 > ssh [ACK] Seq=1 Ack=209
Win=32760 Len=0
2.947365 192.168.254.13 -> 192.168.254.1 NTP 90 NTP Version 2, client
2.947623 192.168.254.1 -> 192.168.254.13 NTP 90 NTP Version 2, server
3.138157 00:8e:73:a2:41:0e -> Spanning-tree-(for-bridges)_00 STP 60 Conf. Root =
8192/10/ec:e1:a9:df:6c:80 Cost = 22 Port = 0x800e
3.139400 192.168.254.13 -> 192.168.254.1 SSH 106 Encrypted response packet len=52
3.270728 192.168.254.4 -> 239.255.70.83 UDP 166 Source port: cfs Destination port:
cfs
3.341123 192.168.254.1 -> 192.168.254.13 TCP 60 29652 > ssh [ACK] Seq=1 Ack=261
Win=32747 Len=0
3.835409 192.168.254.13 -> 192.168.254.1 SSH 106 Encrypted response packet len=52
4.041411 192.168.254.1 -> 192.168.254.13 TCP 60 29652 > ssh [ACK] Seq=1 Ack=313
Win=32734 Len=0
4.535284 192.168.254.13 -> 192.168.254.1 SSH 106 Encrypted response packet len=52
4.741072 192.168.254.1 -> 192.168.254.13 TCP 60 29652 > ssh [ACK] Seq=1 Ack=365
Win=32721 Len=0
4.947308 192.168.254.13 -> 192.168.254.1 NTP 90 NTP Version 2, client
4.947519 192.168.254.1 -> 192.168.254.13 NTP 90 NTP Version 2, server
5.139627 00:8e:73:a2:41:0e -> Spanning-tree-(for-bridges)_00 STP 60 Conf. Root =
8192/10/ec:e1:a9:df:6c:80 Cost = 22 Port = 0x800e
5.140867 192.168.254.13 -> 192.168.254.1 SSH 106 Encrypted response packet len=52
```

Cisco Fabric Services is enabled in the network. Which type of IP address is used by the Cisco Fabric Services protocol?

- A. IPv4 unicast address
- B. IPv4 multicast address
- C. IPv4 gateway address
- D. IPv4 anycast address

Answer: B

NEW QUESTION 205

An engineer is automating a Cisco Nexus 9000 Series Switch using the NX-OS API. Which code snippet creates a local user called "tacuser" with an expiration date of 22 November?

- A)

○ POST <http://10.91.12.14/api/mo/sys/userext.json>

```
{
  "aaaUserEp": {
    "children": [
      {
        "aaaUser": {
          "attributes": {
            "allowExpired": "no",
            "expiration": "2021-11-22T00:00:00.000+00:00",
            "expires": "yes",
            "name": "tacuser",
            "pwd": "AKw47PS3:g4M410:Fs01",
            "pwdEncryptType": "clear"
          }
        }
      }
    ]
  }
}
```

B)

○ GET <http://10.12.14.91/api/mo/sys/userext/user-tacuser.json>

```
{
  {
    "aaaUserEp": {
      "attributes": {
        "childAction": "add",
        "dn": "sys/userext",
        "lcOwn": "local",
        "modTs": "2021-11-22T00:00:00.000+00:00",
        "pwdSecureMode": "yes",
        "pwdStrengthCheck": "no",
        "status": "",
        "uid": "0"
      }
    }
  }
}
```

C)

○ HEAD <http://10.14.91.12/api/policymgr/mo/uni/userext.json>

```
{
  "aaaUser": {
    "name": "tacuser",
    "phone": "",
    "pwd": "H97NW894SDASgQL",
    "expire": "yes",
    "aaaUserDomain": {
      "description": "",
      "name": "all",
      "rn": "userdomain-all"
    }
  }
}
```

○ PUT <http://10.91.14.12/api/policymgr/mo/uni/>

```
{
  "aaaUser": {
    "email": "tacuser@cisco.com",
    "name": "tacuser",
    "createdAt": "2020-09-11T00:00:00.090210Z",
    "authorizations": {
      "authorizedZone": "VDC1",
      "expiresAt": "2021-11-22T00:00:00.000+00:00",
      "authorizedByName": "OPS",
      "authorizedByEmail": "ops@company.com"
    }
  }
}
```

- A. Option A
- B. Option B
- C. Option C

Answer: A

NEW QUESTION 209

A customer asks an engineer to develop a framework that will be used to replace the process of the manual device configuration of Cisco NX-OS devices. The engineer plans to use the programmatic interface that meets these requirements:

- The development team is familiar with Windows-based scripting environment using PowerShell.
- The customer's security requirements mandate the use of HTTPS transport.

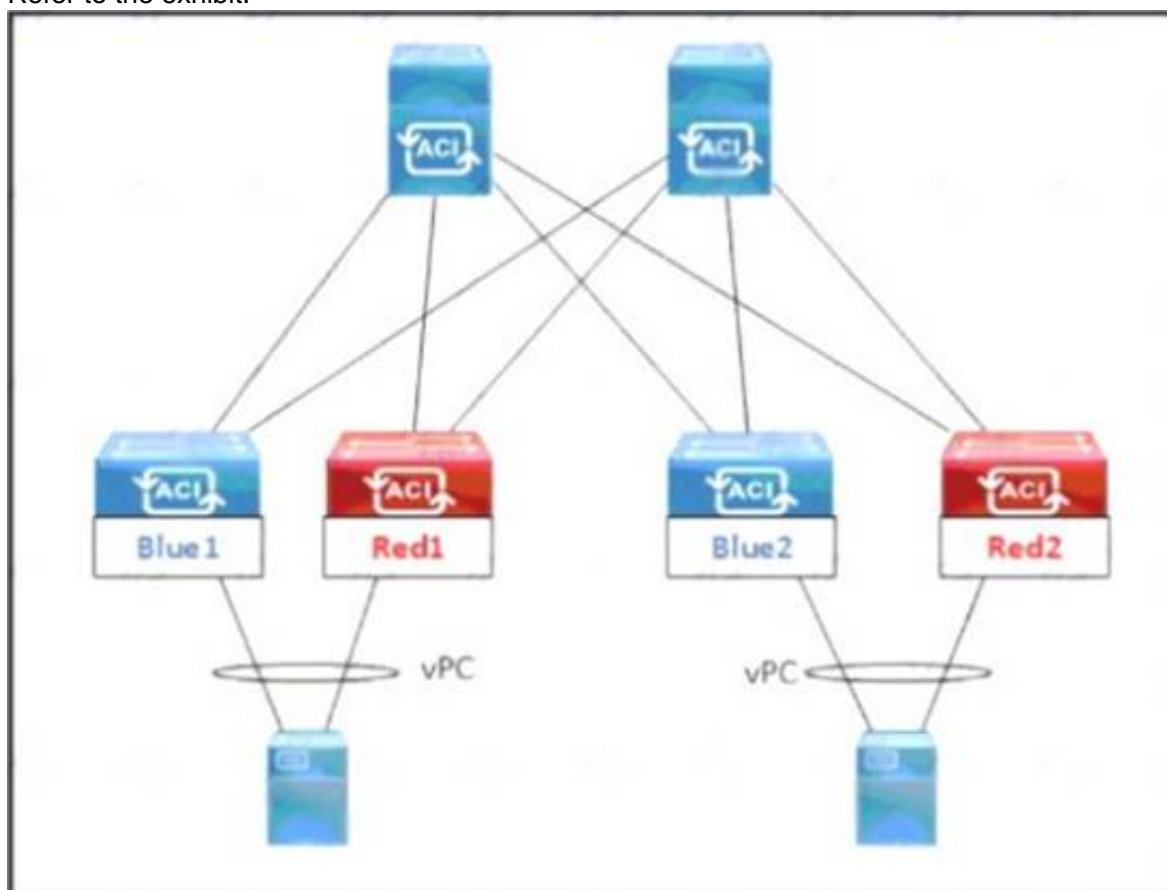
Which solution must be used to meet these requirements?

- A. NX-API
- B. VISORE
- C. Open Agent Container
- D. NETCONF-YANG

Answer: A

NEW QUESTION 210

Refer to the exhibit.



An engineer must schedule the firmware upgrade of the Red1 and Red2 leaf switches. The requirement is to keep the upgrade time to the minimum, avoid any service impact, and perform the parallel upgrade. Which set of scheduler attributes must be used to meet these requirements?

- ☐ • Configure SchedulerPolicy1 for all four leaf switches Blue1, Blue2, Red1, and Red2.
• Configure SchedulerPolicy1 and SchedulerPolicy2 with a one-time window trigger that has maximum concurrent nodes 1.
- ☐ • Configure SchedulerPolicy1 for leaf switches Blue1 and Red1, and SchedulerPolicy2 for leaf switches Blue2 and Red2.
• Configure SchedulerPolicy1 and SchedulerPolicy2 with a one-time window trigger that has maximum concurrent nodes 2.
- ☐ • Configure SchedulerPolicy1 for all four leaf switches Blue1, Blue2, Red1, and Red2.
• Configure SchedulerPolicy1 and SchedulerPolicy2 with a one-time window trigger that has maximum concurrent nodes 2.
- ☐ • Configure SchedulerPolicy1 for leaf switches Blue1 and Red1, and SchedulerPolicy2 for leaf switches Blue2 and Red2.
• Configure SchedulerPolicy1 and SchedulerPolicy2 with a one-time window trigger that has maximum concurrent nodes 1.

- A. Option A
- B. Option B
- C. Option C
- D. Option D

Answer: D

NEW QUESTION 213

A customer has a requirement to deploy a cloud service and needs to have full control over the underlying OS, data and application. Which cloud model meets this requirement?

- A. PaaS
- B. IaaS

- C. IaaS
- D. SaaS

Answer: C

Explanation:

Traditional IT is responsible for Application, Data, Runtime, Middleware, OS, Virtualization, Servers, Storage, Networking. IaaS = Infrastructure as a Service - is responsible for OS, Virtualization, Servers, Storage, Networking. SaaS = Software as a Service - Software deployed by the cloud provider - is responsible for nothing. PaaS = Platform as a Service - Software can be deployed by the customer building their own application | is responsible for Data and Application.

NEW QUESTION 217

An engineer is configuring HTTPS access to Cisco UCS Manager. The engineer created a keyring and created the certificate request for the keyring. Cisco UCS Manager continues to receive untrusted messages from a Firefox browser and a Chrome browser. Which action must be taken as the next step in the HTTPS access configuration?

- A. Create a trusted point
- B. Sign the certificate using the Cisco UCS Manager.
- C. Obtain a validated certificate from Cisco
- D. Install a trusted certificate in the browser store

Answer: A

NEW QUESTION 218

An administrator is implementing DCNM so that events are triggered when monitored traffic exceeds the configured present utilization threshold. The requirement is to configure a maximum limit of 39860437 bytes that applies directly to the statistics collected as a ratio of the total link capacity. Which DCNM performance monitoring configuration parameter must be implemented to achieve this result?

- A. Absolution Values
- B. Baseline
- C. Util%
- D. Per port Monitoring

Answer: A

NEW QUESTION 221

An engineer must configure HTTPS secure management for Cisco UCS Manager using a key ring named kr2016 and a key size of 1024 bits. The environment consists of a primary fabric interconnect named UCS-A and a secondary fabric interconnect named UCS-B. Which command sequence must be used to accomplish this goal?

- ☐ UCS-B# scope security
UCS-B /security # keyring kr2016
UCS-B /security/keyring* # set mod mod1024
UCS-A /security/keyring* # commit-buffer
- ☐ UCS-A# scope security
UCS-A /security # create keyring kr2016
UCS-A /security/keyring* # set modulus mod1024
UCS-A /security/keyring* # commit-buffer
- ☐ UCS-B# scope security
UCS-B /security # create keyring kr2016
UCS-B /security/keyring* # set size mod1024
UCS-A /security/keyring* # commit-buffer
- ☐ UCS-A# scope security
UCS-A /security # keyring name kr2016
UCS-A /security/keyring* # set size 1024
UCS-A /security/keyring* # commit-buffer

- A. Option A
- B. Option B
- C. Option C
- D. Option D

Answer: B

Explanation:

https://www.cisco.com/en/US/docs/unified_computing/ucs/sw/cli/config/guide/1.4.1/CLI_Config_Guide_1_4_1

```
UCS-A# scope security
UCS-A /security # create keyring kr220
UCS-A /security/keyring* # set modulus mod1024
UCS-A /security/keyring* # commit-buffer
UCS-A /security/keyring #
```


NEW QUESTION 226

An engineer must implement a new VRF that permits communication between all endpoint groups (EPGs) by default. The new EPGs and bridge domains (BDs) that are created in the new VRF must not require additional configuration to permit traffic between the newly created EPGs or BDs. Which action accomplishes this goal?

- A. Provide and consume a permit any contract on the VRF level
- B. Create a VRF in the common tenant.
- C. Place all EPGs in the preferred group.
- D. Implement a global contract.

Answer: C

NEW QUESTION 228

Refer to the exhibit.

```
MDSSWITCH# config terminal
MDSSWITCH(config)# fcip profile 1
MDSSWITCH(config-profile)# ip address 192.0.1.10
MDSSWITCH(config-profile)# port 5000
MDSSWITCH(config-profile)# tcp max-bandwidth-mbps 5000
min-available-bandwidth-mbps 4000 round-trip-time-ms 1
MDSSWITCH(config-profile)# exit
MDSSWITCH(config)# interface fcip 1
MDSSWITCH(config-if)# use-profile 1
MDSSWITCH(config-if)# peer-info ipaddr 192.0.1.11
MDSSWITCH(config-if)# tcp-connections 1
MDSSWITCH(config-if)# ip-compression mode2
MDSSWITCH(config-if)# no shutdown
MDSSWITCH(config-if)# exit
MDSSWITCH(config)# interface ipStorage 1/1
MDSSWITCH(config-if)# ip address 192.0.1.10 255.255.255.0
MDSSWITCH(config-if)# switchport mtu 2500
MDSSWITCH(config-if)# no shutdown
MDSSWITCH(config-if)# end
```

An engineer configures FCIP on a Cisco MDS 9000 Series switch. What is the result of implementing the configuration?

- A. The switch attempts to make two TCP connections
- B. Compression is performed by using hardware
- C. Mode2 is enabled by default.
- D. Compression is performed by using software.

Answer: B

Explanation:

https://www.cisco.com/c/en/us/td/docs/switches/datacenter/mds9000/sw/8_x/config/ip_services/ipsvc/cfcip.html

NEW QUESTION 232

Which storage protocol reduces file locks by using leasing?

- A. CIFS
- B. NFS 4
- C. NFS 3
- D. SMB

Answer: D

Explanation:

<https://www.ciscolive.com/c/dam/r/ciscolive/apjc/docs/2016/pdf/BRKCOM-1211.pdf>

- **SMB Directory Leasing**
 - Ability to cache file and directory metadata
 - Branch offices need to make less round trips to the central server

NEW QUESTION 234

Which action must be performed before renumbering a Cisco UCS chassis?

- A. Move the chassis to new ports on fabric interconnect.
- B. Re-acknowledge the chassis.
- C. Decommission the chassis.
- D. Run the shut and no shut command on the connected ports.

Answer: C

NEW QUESTION 235

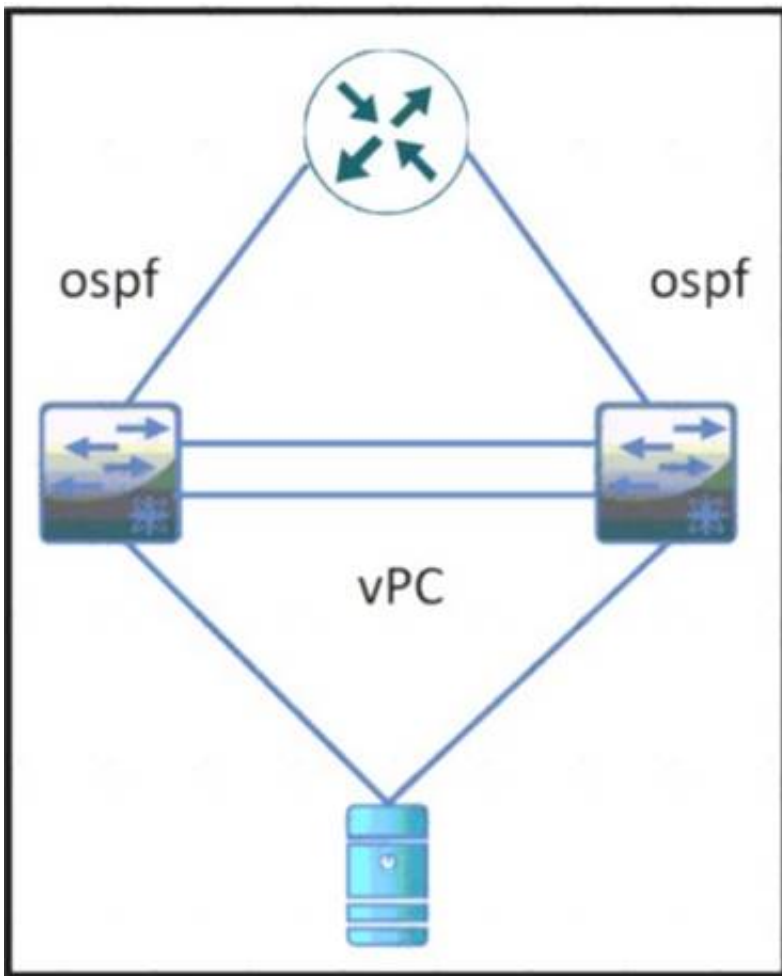
An engineer must suggest a deployment model for a newly developed application. The engineer has a small starting budget and lacks technical knowledge and infrastructure to implement storage, operating system, and database services to support the application deployment. The engineer also needs usage data related to the service and the ability to elastically scale the deployment as customer demands grow. Which two models must be used to meet the requirements? (Choose two.)

- A. private cloud
- B. platform as a service
- C. software as a service
- D. infrastructure as a service
- E. public cloud

Answer: DE

NEW QUESTION 239

Refer to the exhibit



During a vPC peer switch reload, there is packet loss between the server and the router Which action must be taken to prevent this behavior during future reloads?

- A. Set the routed uplink ports of the Cisco Nexus peers as orphans.
- B. Increase the vPC delay restore timer.
- C. Decrease the OSPF hello and dead interval timers.
- D. Disable vPC ARP synchronize on the vPC peers.

Answer: B

NEW QUESTION 242

AN engineer enters these commands while in EEM on a Cisco Nexus 9000 Series Switch. event manager applet Backup-config event timer watchdog time 1800 name timer
 event cli match "copy running-config startup-config" what is the result of applying this configuration?

- A. It saves the running configuration every 1800 seconds.
- B. It generates an error because no action is mentioned.
- C. It executes the copy running-config startup-config command.
- D. It blocks the copy running-config startup-config command.

Answer: B

Explanation:

<https://www.cisco.com/c/en/us/td/docs/switches/datacenter/nexus9000/sw/93x/system-management/b-cisco-nex-graphical-user-interface-text-application-email-description-automatically-generated>

Prerequisites for EEM

EEM has the following prerequisites:

- You must have network-admin user privileges to configure EEM.

Guidelines and Limitations for EEM

EEM has the following configuration guidelines and limitations:

- The maximum number of configurable EEM policies is 500.
- Action statements within your user policy or overriding policy should not negate each other or adversely affect the associated system policy.
- To allow a triggered event to process any default actions, you must configure the EEM policy to allow the default action. For example, if you match a CLI command in a match statement, you must add the event-default action statement to the EEM policy or EEM will not allow the CLI command to execute.
- When you configure an EEM policy action to collect **show tech** commands, make sure to allocate enough time for the **show tech** commands to complete before the same action is called again.

NEW QUESTION 245

Drag and drop the hyperflex characteristics from the left onto the appropriate. HyperFlex Node types on the right. Not all options are used.

uses only SSD drives for caching

contains HDDs for the capacity layer

uses SSD drives or NVMe storage for caching

has SSD drives for the capacity layer

recommended for repeatable and sustainable high performance, especially for scenarios with a larger working set of data

recommended for capacity-sensitive solutions, lower budgets, and fewer performance-sensitive applications

Hybrid Node

All Flash Node

- A. Mastered
B. Not Mastered

Answer: A

Explanation:

uses only SSD drives for caching

contains HDDs for the capacity layer

uses SSD drives or NVMe storage for caching

has SSD drives for the capacity layer

recommended for repeatable and sustainable high performance, especially for scenarios with a larger working set of data

recommended for capacity-sensitive solutions, lower budgets, and fewer performance-sensitive applications

Hybrid Node

uses only SSD drives for caching

contains HDDs for the capacity layer

recommended for repeatable and sustainable high performance, especially for scenarios with a larger working set of data

All Flash Node

uses SSD drives or NVMe storage for caching

has SSD drives for the capacity layer

recommended for capacity-sensitive solutions, lower budgets, and fewer performance-sensitive applications

NEW QUESTION 249

An engineer must affirm the identity of the Cisco UCS Manager after a valid CA-signed keyring for HTTPS access is created. Which action completes the configuration?

- A. Set Cipher Suite Mode
- B. Create a trusted point
- C. Implement SSLv3
- D. Enable TLSv1.2

Answer: B

NEW QUESTION 253

Which two components should be checked when a Cisco Nexus 9000 Series Switch fails to boot using POAP? (Choose two.)

- A. image noted in the script file against switch bootflash
- B. DHCP server to bootstrap IP information
- C. script signed with security key
- D. TFTP server that contains the configuration script
- E. POAP feature license

Answer: BD

Explanation:

[https://www.cisco.com/c/en/us/td/docs/switches/datacenter/nexus9000/sw/7-x/troubleshooting/guide/ b_Cisco_Nexus_9000_Series_NX-OS_Troubleshooting_Guide_7x/b_Cisco_Nexus_9000_Series_NXOS_Troubleshooting_Guide_7x_chapter_01100.html](https://www.cisco.com/c/en/us/td/docs/switches/datacenter/nexus9000/sw/7-x/troubleshooting/guide/b_Cisco_Nexus_9000_Series_NX-OS_Troubleshooting_Guide_7x/b_Cisco_Nexus_9000_Series_NXOS_Troubleshooting_Guide_7x_chapter_01100.html)

https://www.cisco.com/c/en/us/td/docs/switches/datacenter/nexus9000/sw/7-x/fundamentals/configuration/ guide/b_Cisco_Nexus_9000_Series_NX-OS_Fundamentals_Configuration_Guide_7x/ b_Cisco_Nexus_9000_Series_NX-OS_Fundamentals_Configuration_Guide_7x_chapter_0100.html

NEW QUESTION 255

Drag and drop the NAS features from the left onto the NAS descriptions on the right. Not all features are used

block-based data storage	storage type
Ethernet protocol	clustering type
FCoE	connectivity type
file-based data storage	serving protocol type
Fibre Channel protocol	
stripe data and metadata across nodes	
UPnP	

- A. Mastered
- B. Not Mastered

Answer: A

Explanation:

A screenshot of a computer Description automatically generated with medium confidence

https://en.wikipedia.org/wiki/Network-attached_storage

NEW QUESTION 257

An engineer must configure OSPFv2 connectivity between a pair of Cisco Nexus switches. The connection between the switches must meet these requirements:

- Use unicast for updates.
- Use decentralized communication of updates.
- Full adjacency between switches.

Which configuration is needed to meet these requirements?

- A. interface with a type of p2p network
- B. stub area between the neighbors
- C. filter list between the neighbors
- D. virtual link between the neighbors

Answer: A

NEW QUESTION 262

An engineer must configure the order in which the server attempts to boot from available boot device types using Cisco Integrated Management Controller (Cisco IMC). The engineer must change the boot order configuration during the setup and apply the new requirements multiple times. The requirement is to change the Cisco IMC actual boot order so it is different from the configured boot order. Which setting accomplishes this goal?

- A. Enable the system to boot with the configured boot order.
- B. Set the boot configuration directly through BIOS.
- C. Configure the legacy and precision boot order to be mutually exclusive.
- D. Apply UEFI Secure Boot for a nonsupported operating system.

Answer: A

Explanation:

https://www.cisco.com/en/US/docs/unified_computing/ucs/c/sw/gui/config/guide/1.5/b_Cisco_UCS_C-series_G

NEW QUESTION 263

An engineer wants to create a backup of Cisco UCS Manager for disaster recovery purposes. What are two characteristics of a full state backup of a Cisco UCS Manager database? (Choose two.)

- A. performs a complete binary dump of the database as a .txz file
- B. contains all of the configurations
- C. performs a complete binary dump of the database as a bin file
- D. performs a complete binary dump of the databases as a sql file
- E. contains all of the runtime states and statuses but not the configurations

Answer: AB

Explanation:

File: compressed file in .tar.gz format

<https://www.virtual-odyssey.com/2019/10/31/its-the-little-stuff-cisco-ucs-backups/> the file extension for bin in a cisco context is usually the OS.

tar files are used for backup. <https://peazip.github.io/tar-file-format.html>

NEW QUESTION 266

Which configuration implements static ingress replication?

- ☒ interface nve 1
member vni 2100980
ingress-replication protocol static
peer-ip 10.0.0.4
- ☐ interface nve 1
member vni 127772151
ingress-replication protocol bgp
- ☐ interface nve 1
member vni 3126980
peer vtep 10.0.0.4
ingress-replication protocol static
peer-ip 10.0.0.4
- ☐ interface nve 1
member vni 384233213
peer vtep 10.0.0.4

- A. Option A
- B. Option B
- C. Option C
- D. Option D

Answer: A

Explanation:

"Configuring Static Ingress Replication" section here:

https://www.cisco.com/c/en/us/td/docs/switches/datacenter/nexus9000/sw/7-x/vxlan/configuration/guide/b_Cisc

NEW QUESTION 267

Which service profile is affected if the default host firmware policy in Cisco UCS Manager is changed?

- A. any service profile that has no host firmware policy defined
- B. any service profile that uses a user-created host firmware policy
- C. any service profile that is not in the root sub-org
- D. any service profile that uses the global-default host firmware policy

Answer: A

Explanation:

https://www.cisco.com/c/en/us/td/docs/unified_computing/ucs/ucs-manager/GUI-User-Guides/Firmware-Mgmt/3-1/b_UCSM_GUI_Firmware_Management_Guide_3_1/b_UCSM_GUI_Firmware_Management_Guide_3_1_chapter_011.html

NEW QUESTION 271

Port security is enabled on a Cisco MDS 9000 series Switch. Which statement is true?

- A. Cisco Fabric Services must be disabled before enabling port security.
- B. Port security can be enabled only globally and affects all VSANs.
- C. Auto-learning is always enabled automatically when port security is enabled.
- D. Any devices currently logged in must be added manually to the device databased.

Answer: C

Explanation:

https://www.cisco.com/c/en/us/td/docs/switches/datacenter/mds9000/sw/8_x/config/security/cisco_mds9000_security_config_guide_8x/configuring_port_security.html

- **Active database:** The database currently enforced by the switch. The port security feature requires all devices connecting to a switch to be part of the port security active database. The software uses this active database to enforce authorization.

About Auto-Learning

You can instruct the switch to automatically learn (auto-learn) the port security configurations over a specified period. This feature allows any switch in the Cisco MDS 9000 Family to automatically learn about devices and switches that connect to it. Use this feature when you activate the port security feature for the first time as it saves tedious manual configuration for each port. You must configure auto-learning on a per-VSAN basis. If enabled, devices and switches that are allowed to connect to the switch are automatically learned, even if you have not configured any port access.

When auto-learning is enabled, learning happens for the devices or interfaces that were already logged into the switch and the new devices or interfaces that need to be logged in. Learned entries on a port are cleaned up after you shut down that port if auto-learning is still enabled.

Learning does not override the existing configured port security policies. So, for example, if an interface is configured to allow a specific pWWN, then auto-learning will not add a new entry to allow any other pWWN on that interface. All other pWWNs will be blocked even in auto-learning mode.

No entries are learned for a port in the shutdown state.

When you activate the port security feature, auto-learning is also automatically enabled.



Note

If you activate port security feature, auto-learning gets enabled by default. You cannot re-activate port security until auto-learning is disabled or deactivate and activate again.

Port Security Activation

By default, the port security feature is not activated in any switch in the Cisco MDS 9000 Family.

By activating the port security feature, the following apply:

- Auto-learning is also automatically enabled, which means:
 - From this point, auto-learning happens for the devices or interfaces that were already logged into the switch and also for the new devices will login in future.
 - You cannot activate the database until you disable auto-learning.
- All the devices that are already logged in are learned and are added to the active database.
- All entries in the configured database are copied to the active database.

After the database is activated, subsequent device login is subject to the activated port bound WWN pairs, excluding the auto-learned entries. You must disable auto-learning before the auto-learned entries become activated.

When you activate the port security feature, auto-learning is also automatically enabled. You can choose to activate the port security feature and disable auto-learning.

NEW QUESTION 274

Which file service protocol allows the files to appear locally mapped to the client and provides view, store, and update capabilities on a remote Linux-based storage repository that also serves as a distributed file system standard for NAS?

- A. NFS
- B. FTP
- C. iSCSI
- D. IFS

Answer: D

NEW QUESTION 279

An infrastructure architect is analyzing the deployment type for an application. Several companies must be able to operate the application environment and integrate it with a third-party protocol. The development team also must have maximum control over their development environment, including the operating system used, Python interpreter, and corresponding libraries. Which cloud deployment solution meets these requirements?

- A. public cloud Storage as a Service
- B. private cloud Platform as a Service
- C. hybrid cloud Software as a Service
- D. community cloud Infrastructure as a Service

Answer: D

NEW QUESTION 281

An engineer is implementing NPV mode on a Cisco MDS 9000 Series Switch. Which action must be taken?

- A. The FCNS database must be disabled in the fabric.
- B. A port channel must be configured to the upstream switch.
- C. All switches in the fabric must be Cisco MDS switches.
- D. NPIV must be enabled on the upstream switch.

Answer: D

Explanation:

https://www.cisco.com/c/en/us/td/docs/switches/datacenter/mds9000/sw/5_0/configuration/guides/int/nxos/cli_i

NEW QUESTION 286

.....

Thank You for Trying Our Product

We offer two products:

1st - We have Practice Tests Software with Actual Exam Questions

2nd - Questions and Answers in PDF Format

350-601 Practice Exam Features:

- * 350-601 Questions and Answers Updated Frequently
- * 350-601 Practice Questions Verified by Expert Senior Certified Staff
- * 350-601 Most Realistic Questions that Guarantee you a Pass on Your First Try
- * 350-601 Practice Test Questions in Multiple Choice Formats and Updates for 1 Year

100% Actual & Verified — Instant Download, Please Click
[Order The 350-601 Practice Test Here](#)