

Cisco

Exam Questions 300-415

Implementing Cisco SD-WAN Solutions (ENSDWI)



NEW QUESTION 1

Which component of the Cisco SD-WAN secure extensible network provides a single pane of glass approach to network monitoring and configuration?

- A. APIC-EM
- B. vSmart
- C. vManage
- D. vBond

Answer: C

Explanation:

Cisco vManage provides a single-pane-of-glass management to manage all controller components and both enterprise and extended enterprise WAN edge devices. The comprehensive vManage GUI has dashboard, monitor, configuration, tools, maintenance, administration, and analytics as the top-level menus.

NEW QUESTION 2

What is the role of the Session Traversal Utilities for NAT server provided by the vBond orchestrator?

- A. It facilitates SD-WAN toners and controllers to discover their own mapped or translated IP addresses and port numbers
- B. It prevents SD-WAN Edge routers from forming sessions with public transports among different service providers
- C. It facilitates SD-WAN Edge routers to stay behind a NAT-enabled firewall while the transport addresses of the SD-WAN controller are unNAT-ed
- D. It allows WAN Edge routers to form sessions among MPLS TLOCs using only public IP addresses

Answer: C

NEW QUESTION 3

An engineering team must prepare a traffic engineering policy where an MPLS circuit is preferred for traffic coming from the Admin VLAN Internet should be used as a backup only. Which configuration fulfill this requirement?

A)

```
policy
data-policy _TE
vpn-list VPN_10
sequence 1
match
source-data-prefix-list Source_Prefix
destination-data-prefix-list Dest_Prefix
action accept
set
vpn 10
tloc-list Hub_TLOCs
default-action reject
!
tloc-list Hub_TLOCs
tloc 10.4.4.4 color mpls encap ipsec preference 300
tloc 10.4.4.4 color public-internet encap ipsec preference 600
```

B)

```
policy
data-policy _TE
vpn-list VPN_10
sequence 1
match
source-data-prefix-list Source_Prefix
destination-data-prefix-list Dest_Prefix
action accept
nat use-vpn 0
nat fallback
default-action reject
!
tloc-list Hub_TLOCs
tloc 10.4.4.4 color mpls encap ipsec preference 300
tloc 10.4.4.4 color public-internet encap ipsec preference 600
```

C)

```
policy
data-policy _TE
vpn-list VPN_10
sequence 1
match
source-data-prefix-list Source_Prefix
destination-data-prefix-list Dest_Prefix
action accept
set
vpn 10
tloc-list Hub_TLOCs
default-action accept
!
tloc-list Hub_TLOCs
tloc 10.4.4.4 color mpls encap ipsec preference 600
tloc 10.4.4.4 color public-internet encap ipsec preference 300
```

D)

```
policy
data-policy _TE
vpn-list VPN_10
sequence 1
match
source-data-prefix-list Source_Prefix
destination-data-prefix-list Dest_Prefix
action accept
set
vpn 512
tloc-list Hub_TLOCs
default-action accept
!
tloc-list Hub_TLOCs
tloc 10.4.4.4 color mpls encaps ipsec preference 600
tloc 10.4.4.4 color public-internet encaps ipsec preference 300
```

- A. Option A
- B. Option B
- C. Option C
- D. Option D

Answer: C

NEW QUESTION 4

What are the default username and password for vSmart Controller when it is installed on a VMware ESXi hypervisor'?

- A. username Cisco password admin
- B. username admin password Cisco
- C. username Cisco password Cisco
- D. username admin password admin

Answer: D

NEW QUESTION 5

Refer to the exhibit.

```
LAB-ROUTER#show ip route vrf 100
Gateway of last resort is 10.1.9.2 to network 0.0.0.0

m*   0.0.0.0/0 [251/0] via 10.1.9.2, 06:10:53
      [251/0] via 10.1.9.3, 06:10:53
O    10.80.6.0/24
      [110/300] via 172.19.75.78, 20:35:33, GigabitEthernet0/0/2.10
      [110/300] via 172.19.75.66, 1w0d, GigabitEthernet0/0/1.11
O    10.80.56.0/24
      [110/300] via 172.19.75.78, 20:35:33, GigabitEthernet0/0/2.10
      [110/300] via 172.19.75.66, 1w0d, GigabitEthernet0/0/1.11
```

The network administrator has configured a centralized topology policy that results in the displayed routing table at a branch office. Which two configurations are verified by the output? [Choose two.]

- A. The routing table is for the transport VPN.
- B. The default route is learned via OMP.
- C. This routing table is from a cEdge router.
- D. The default route is configured locally.
- E. The configured policy is adding a route tag of 300 to learned routes.

Answer: BC

NEW QUESTION 6

A network administrator configures SNMFV3 on a Cisco WAN Edge router from CL I for monitoring purposes How many characters are supported by the snmp user username command?

- A. from 1 to 8
- B. from 1 to 16
- C. from 1 to 32
- D. from 1 to 48

Answer: C

NEW QUESTION 7

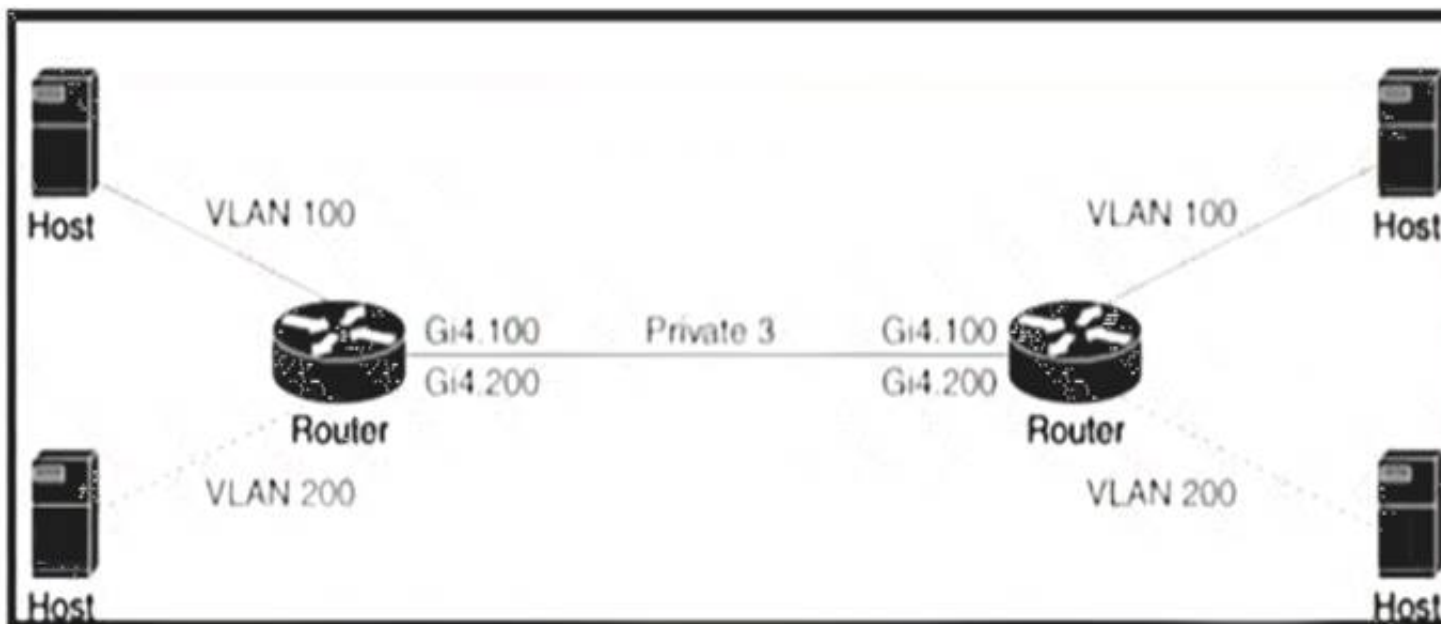
Which type of certificate is installed on vManage for a user to access vManage via a web browser?

- A. Controller Certificate
- B. Web Server Certificate
- C. WAN Edge Certificate
- D. SD-AVC Certificate

Answer: B

NEW QUESTION 8

Refer to the exhibit



An engineer is configuring a QoS policy to shape traffic for VLAN 100 on a subinterface Which policy configuration accomplishes the task?

- A)
- ```

policy-map shape_GigabitEthernet4.100
class class-default
service-policy xyz_QoS-model
shape average 100000000
!
interface GigabitEthernet4.100
encapsulation dot1Q 200
service-policy output shape_GigabitEthernet4.100

```
- B)
- ```

policy-map shape_GigabitEthernet4.100
class class Queue0
service-policy xyz_QoS-model
shape average 100000000
!
interface GigabitEthernet4.100
encapsulation dot1Q 200
service-policy output shape_GigabitEthernet4.100
    
```
- C)
- ```

policy-map shape_GigabitEthernet4.200
class class-default
service-policy xyz_QoS-model
shape average 100000000
!
interface GigabitEthernet4.100
encapsulation dot1Q 100
service-policy output shape_GigabitEthernet4.200

```
- D)
- ```

policy-map shape_GigabitEthernet4.200
class class Queue0
service-policy xyz_QoS-model
shape average 100000000
!
interface GigabitEthernet4.100
encapsulation dot1Q 100
service-policy output shape_GigabitEthernet4.100
    
```

- A. Option A
- B. Option B
- C. Option C
- D. Option D

Answer: C

NEW QUESTION 9

An engineer configures an application-aware routing policy for a group of sites The locations depend on public and private transports The policy does not work as expected when one of the transports does not perform properly This policy is configured:

```
policy
sla-class BULK_DATA
loss 20
latency 300
jitter 100
!
sla-class TRANSACTIONAL_DATA
loss 15
latency 50
jitter 100
!
sla-class REALTIME
loss 20
latency 100
jitter 30
!
app-route-policy VPN-10_MPLS_AND_INET_SITES
vpn-list VPN-10
sequence 1
match
dscp 46
!
action
backup-sla-preferred-color biz-internet
sla-class REALTIME preferred-color private1
!
!
sequence 11
match
dscp 34
!
action
backup-sla-preferred-color biz-internet
sla-class TRANSACTIONAL_DATA preferred-color private1
!
!
```

which configuration completes the policy so that it works for all locations?

A)

```
sla-class TRANSACTIONAL_DATA
loss 5
latency 50
jitter 100
!
sla-class REALTIME
loss 2
latency 100
jitter 30
!
```

B)

```
sla-class TRANSACTIONAL_DATA
loss 2
latency 100
jitter 30
!
sla-class REALTIME
loss 15
latency 100
jitter 100
!
```

C)

```
sla-class BULK_DATA
loss 10
latency 300
jitter 100
!
sla-class REALTIME
loss 2
latency 100
jitter 30
!
```

D)

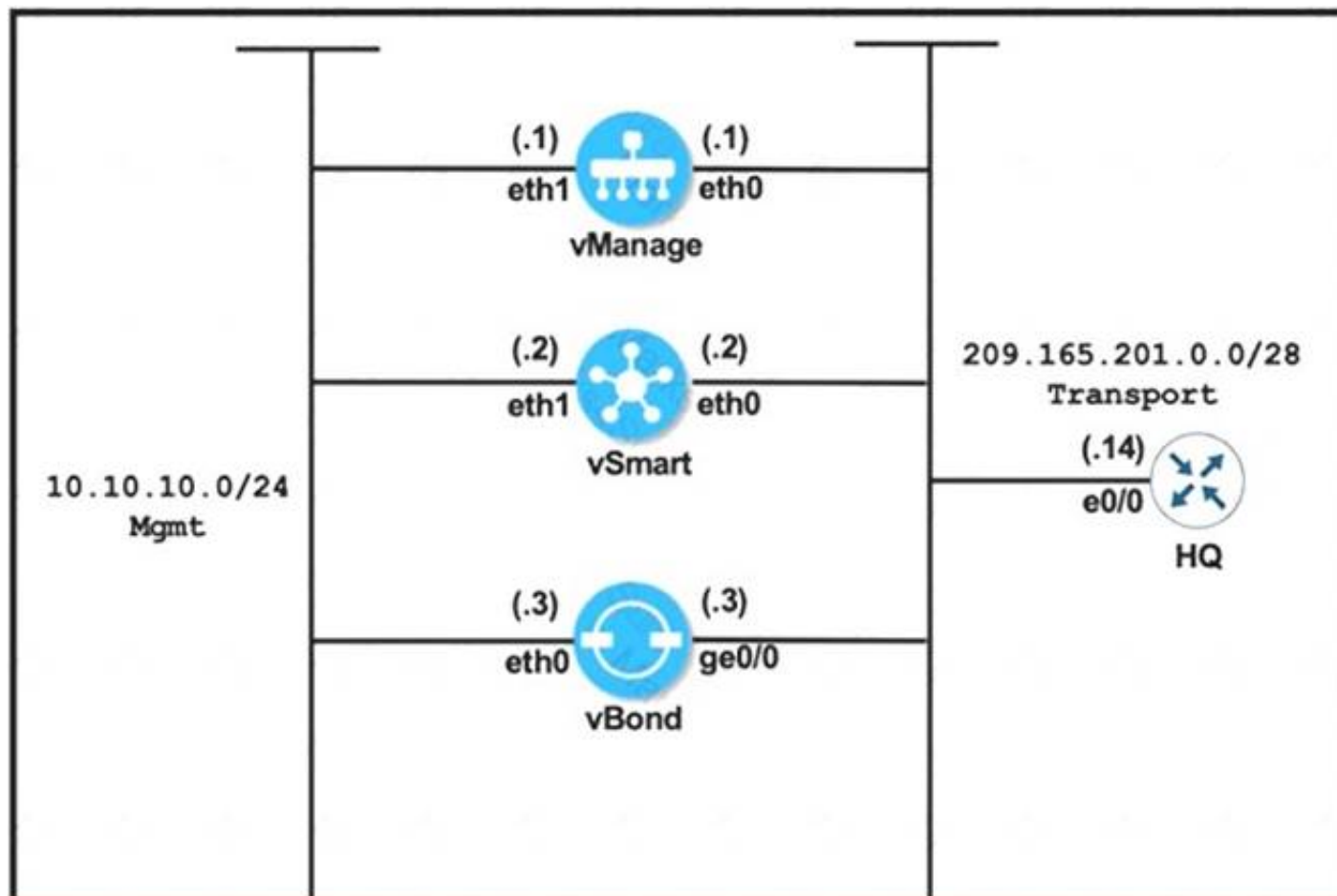

```
sla-class BULK_DATA
loss 15
latency 100
jitter 100
!
sla-class TRANSACTIONAL_DATA
loss 10
latency 300
jitter 100
!
```

- A. Option A
- B. Option B
- C. Option C
- D. Option D

Answer: A

NEW QUESTION 10

Refer to the exhibit



vManage	vBond
<pre>system system-ip 10.10.10.101 host-name vManage site-id 1 clock timezone Europe/London vbond 209.165.201.3 organization-name Cisco.com ! vpn 0 interface eth0 ip address 209.165.201.1/28 no shut tunnel-interface allow-service all ip route 0.0.0.0/0 209.165.201.14 ! commit</pre>	<pre>system system-ip 10.10.10.103 host-name vBond site-id 1 clock timezone Europe/London vbond 209.165.201.3 local organization-name viptela.com ! vpn 0 interface ge0/0 ip address 209.165.201.3/28 no shut tunnel-interface encapsulation ipsec allow-service all ip route 0.0.0.0/0 209.165.201.14 ! commit</pre>

vManage and vBond have an issue establishing a connection with each other Which action resolves the issue?

- A. Reconfigure the system IPs to belong to the same subnet
- B. Change the organization name on both controllers to match vipteta.com.
- C. Remove the encapsulation ipsec command under the tunnel interface of vBond
- D. Configure the encapsulation ipsec command under the tunnel interface on vManage

Answer: B

Explanation:

<https://community.cisco.com/t5/sd-wan-and-cloud-networking/encapsulation-ipsec-on-vbond/td-p/4451149> "encapsulation" command under vBond tunnel-interface has no meaning and effect.

NEW QUESTION 10

Which secure connection should be used to access the REST APIs through the Cisco vManage web server?

- A. HTTP inspector interface
- B. authenticated HTTPS
- C. authenticated DTLS
- D. JSON Inspector interface

Answer: B

Explanation:

<https://documenter.getpostman.com/view/3224967/SVmpXhXd#ed9ccd34-cc5a-4258-bb6b-9b3848b7f650>

NEW QUESTION 11

An engineer is configuring a shaping rate of 1 Mbps on the WAN link of a WAN Edge router Which configuration accomplishes this task'?

- ☒ vpn vpn-id
interface interface-name
shaping-rate 1000000
- ☐ vpn vpn-id
interface interface-name
shaping-rate 1000
- ☐ interface interface-name
vpn vpn-id
shaping-rate 1000000
- ☐ interface interface-name
vpn vpn-id
shaping-rate 1000

- A. Option A
- B. Option B
- C. Option C
- D. Option D

Answer: B

NEW QUESTION 12

Which port is used for vBond under controller certificates if no alternate port is configured?

- A. 12345
- B. 12347
- C. 12346
- D. 12344

Answer: C

Explanation:

vSmart and vManage are normally installed behind NAT device, so port hopping is not needed. vBond always uses to other Viptela devices using port 12346 and they never use port hopping.

NEW QUESTION 16

Which configuration allows users to reach YouTube from a local Internet breakout?

- A)
VPN 10
ip route 0.0.0.0/0 vpn 0
- B)
VPN 10
ip route 0.0.0.0/0 vpn 0
VPN 0
interface Gig1/1
nat
- C)

```
policy
data-policy DPI
vpn-list vpn10
sequence 10
match
app-list YouTube
destination-port 80 443
!
action accept
count Youtube
!
default-action accept
!
lists
vpn-list vpn10
vpn 10
!
app-list YouTube
app youtube
app youtube_hd
!
site-list Remote
site-id 14
site-id 15
!
!
!
apply-policy
site-list Remote
data-policy DPI from-transport
```

D)


```
policy
data-policy DPI
vpn-list vpn10
sequence 10
match
app-list YouTube
!
action drop
count Youtube
!
default-action accept
!
lists
vpn-list vpn10
vpn 10
!
app-list YouTube
app youtube
app youtube_hd
!
site-list Remote
site-id 14
site-id 15
!
apply-policy
site-list Remote
data-policy DPI from-transport

vpn 10
ip route 0.0.0.0/0 vpn 0
```

- A. Option A
- B. Option B
- C. Option C
- D. Option D

Answer: B

Explanation:

As explained in figure 7, within the direct Internet model, segmentation is leveraged by deploying centralized data policies or a NAT DIA route to leak Internet traffic from the service-side VPN (VPNs 0 - 511,513 - 65530) into the Internet transport VPN (VPN 0), which allows traffic to exit directly to the Internet through the NAT- enabled interface in VPN 0.

<https://www.cisco.com/c/dam/en/us/td/docs/solutions/CVD/SDWAN/sdwan-dia-deploy-2020aug.pdf>

NEW QUESTION 19

Which policy tracks path characteristics such as loss, latency, and jitter in vManage?

- A. VPN
- B. control
- C. app-route
- D. data

Answer: C

Explanation:

<https://www.cisco.com/c/en/us/td/docs/routers/sdwan/configuration/policies/ios-xe-17/policies-book-xe/applicat>

NEW QUESTION 23

Which device information is required on PNP/ZTP to support the zero-touch onboarding process?

- A. interface IP address
- B. system IP address
- C. public DNS entry
- D. serial and chassis numbers

Answer: D

NEW QUESTION 27

What prohibits deleting a VNF image from the software repository?

- A. if the image is stored by vManage
- B. if the image is referenced by a service chain
- C. if the image is uploaded by a WAN Edge device
- D. if the image is included in a configured policy

Answer: D

NEW QUESTION 29

An engineer is configuring the branch office with a 172.16.0.0/16 subnet to use DIA for Internet traffic. All other traffic must flow to the central site or branches using the MPLS circuit Which configuration meets the requirement?

A)

```
data-policy SDW_DIA
vpn-list VPN172
sequence 1
match
source-ip 172.16.0.0/16
destination-ip 172.16.0.0/16
!
sequence 2
match
source-data-prefix-list DIA
action accept
nat use-vpn 0
!
default-action accept
```

B)

```
data-policy SDW_DIA
vpn-list VPN172
sequence 1
match
source-ip 172.16.0.0/16
action accept
!
sequence 2
match
source-data-prefix-list DIA
action accept
nat use-vpn 0
!
default-action accept
```

C)

```
data-policy SDW_DIA
vpn-list VPN172
sequence 1
match
source-ip 172.16.0.0/16
destination-ip 172.16.0.0/16
action accept
!
sequence 2
match
source-data-prefix-list DIA
action accept
nat use-vpn 0
!
default-action accept
```

D)

```
data-policy SDW_DIA
vpn-list VPN172
sequence 1
match
source-ip 172.16.0.0/16
destination-ip 172.16.0.0/16
!
sequence 2
match
source-data-prefix-list DIA
action accept
!
default-action accept
```

- A. Option A
- B. Option B
- C. Option C
- D. Option D

Answer: C

NEW QUESTION 34

A bank is looking for improved customer experience for applications and reduce overhead related to compliance and security. Which key feature or features of the Cisco SD-WAN solution will help the bank to achieve their goals?

- A. Integration with PaaS providers to offer the best possible application experience
- B. QoS including application prioritization and meeting critical applications SLA for selecting optimal path.
- C. implementation of a modern age core banking system
- D. implementation of BGP across the enterprise routing for selecting optimal path

Answer: B

Explanation:

<https://www.cisco.com/c/dam/en/us/solutions/collateral/enterprise-networks/sd-wan/nb-06-cisco-sd-wan-ebook->

NEW QUESTION 37

Refer to the exhibit.

						PEER		PEER	
LOCAL	PEER REMOTE	PEER REPEAT	PEER	SITE	DOMAIN	PEER	PRIVATE	PEER	PUBLIC
INSTANCE TYPE	REMOTE COLOR	PROTOCOL STATE	SYSTEM IP ERROR	ID ERROR	ID COUNT	PRIVATE IP DOWNTIME	PORT	PUBLIC IP	PORT

0	vsmart	tls	1.1.1.3	100	1	100.1.1.3	23456	100.1.1.3	23456
default		trying	DOWNFAIL	NOERR	10001	2020-01-01T10:01:20+0000			

The control connection is failing. Which action resolves the issue?

- A. import vSmart in vManager
- B. Validate the certificates authenticity on vSmart
- C. Upload the WAN Edge list on vManage.
- D. Restore the reachability to the vSmart

Answer: D

Explanation:

<https://www.cisco.com/c/en/us/support/docs/routers/sd-wan/214509-troubleshoot-control-connections.html>

NEW QUESTION 41

How must the application-aware enterprise firewall policies be applied within the same WAN Edge router?

- A. within and between zones
- B. between two VPN tunnels
- C. within zone pair
- D. between two VRFs

Answer: C

NEW QUESTION 44

Which TCP Optimization feature is used by WAN Edge to prevent unnecessary retransmissions and large initial TCP window sizes to maximize throughput and achieve a better quality?

- A. SEQ
- B. SYN
- C. RTT
- D. SACK

Answer: D

Explanation:

TCP Optimization

The Cisco SD-WAN TCP Optimization feature uses **TCP Selective Acknowledgement (SACK)** to prevent unnecessary retransmissions and large initial TCP window sizes in order to maximize throughput and achieve a better quality of experience.

NEW QUESTION 46

Refer to the exhibit.

```

policy
lists
!
  tloc-list dc-preference-east
  tloc 100.100.100.100 color mpls
encap ipsec preference 200
  tloc 101.101.101.101 color mpls
encap ipsec preference 400
!
  site-list sites-region-west
  site-id 1-20
!
  site-list sites-region-east
  site-id 21-40
!
  site-list dc-sites
  site-id 100-101

control-policy adv-dc-preference-west
sequence 10
match route
  site-list dc-sites
!
action accept
set
  tloc-list dc-preference-east
!

!
default-action accept
!
control-policy adv-dc-preference-east
sequence 10
match route
  site-list dc-sites
!
action accept
set
  tloc-list dc-preference-east
!
!
default-action accept
!
!
apply-policy
  site-list sites-region-west
  control-policy adv-dc-preference-west
out
!
  site-list sites-region-east
  control-policy adv-dc-preference-east
out
!
!

```

A customer wants to implement primary and secondary Cisco SD-WAN overlay routing for prefixes that are advertised for both data centers. The east data center (TLOC 101.101.101.101) is primary for east sites, and the west data center (TLOC 100.100.100.100) is primary for west sites. Which configuration change achieves this objective?

A.

```

lists
tloc-list dc-preference-west
tloc 100.100.100.100 color mpls encap ipsec preference 400
tloc 101.101.101.101 color mpls encap ipsec preference 200

control-policy adv-dc-preference-west
sequence 10
match route
  site-list dc-sites
!
action accept
set
  tloc-list dc-preference-west
!
!
default-action accept

```

B.

```

lists
tloc-list dc-preference-west
tloc 100.100.100.100 color mpls encap ipsec preference 200
tloc 101.101.101.101 color mpls encap ipsec preference 400

control-policy adv-dc-preference-west
sequence 10
match route
  site-list dc-sites
!
action accept
set
  tloc-list dc-preference-west
!
!
default-action accept

```

C.

```

tloc-list dc-preference-east
tloc 100.100.100.100 color mpls encap ipsec preference 400
tloc 101.101.101.101 color mpls encap ipsec preference 200

```

D.

```

control-policy adv-dc-preference-west
sequence 10
match route
  site-list dc-sites
!
action accept
set
  tloc-list dc-preference-west
!
!
default-action accept

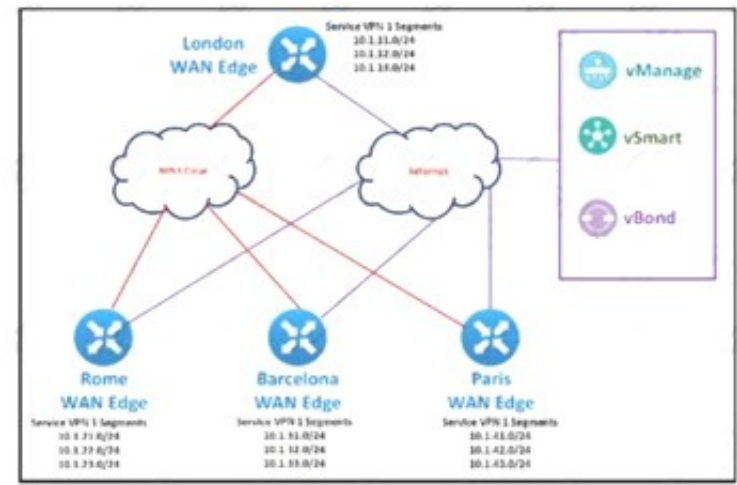
```


- A. Option A
- B. Option B
- C. Option C
- D. Option D

Answer: A

NEW QUESTION 47

Refer to the exhibit.



The SD-WAN network is configured with a default full-mesh topology. The SD-WAN engineer wants the Barcelona WAN Edge to use MPLS TLOC as the preferred TLOC when communicating with Rome site. Which configuration must the engineer use to create a list to select MPLS color toward the Rome TLOC?

A)

Add Mesh Region

Name: Partial_Mesh

Description: Partial_Mesh

VPN List: ALL

Mesh Region Name: North

B)

Add Mesh Region

Name: Partial_Mesh

Description: Partial_Mesh

VPN List: ALL

Mesh Region Name: North

C)

Add Control Policy

TLOC: Create a policy to apply to TLOCs

D)

Add VPN Membership Policy

VPN Membership Name

Site_to_Site

Description

Site_to_Site VPN List

Site List

VPN Lists

Spokes

ALL x

- A. Option A
- B. Option B
- C. Option C
- D. Option D

Answer: C

NEW QUESTION 49

Drag and drop the steps from the left Into the order on the right to delete a software image for a WAN Edge router starting with Maintenance > Software Upgrade > Device list on vManage.

Click delete available software.	step 1
Click the checkbox next to the WAN Edge device.	step 2
Click WAN Edge in the title bar.	step 3
Select the version to delete and click delete.	step 4

- A. Mastered
- B. Not Mastered

Answer: A

Explanation:

Click delete available software.	Click WAN Edge in the title bar.
Click the checkbox next to the WAN Edge device.	Click the checkbox next to the WAN Edge device.
Click WAN Edge in the title bar.	Click delete available software. 3
Select the version to delete and click delete.	Select the version to delete and click delete.

NEW QUESTION 54

An engineer is adding a tenant with location JD 306432373 in vManage. What is the maximum number of alphanumeric characters that are accepted in the tenant name field?

- A. 64
- B. 128
- C. 256
- D. 8

Answer: B

Explanation:

In the Add Tenant window:

1. Enter a name for the tenant. It can be up to 128 characters and can contain only alphanumeric characters.

NEW QUESTION 56

Which device in the SD- WAN solution receives and categorizes event reports, and generates alarms?

- A. WAN Edge routers
- B. vSmart controllers
- C. vManage NMS
- D. vBond controllers

Answer: C

Explanation:

https://sdwan-docs.cisco.com/Product_Documentation/vManage_Help/Release_17.1/vManage_NMS_Product_

NEW QUESTION 57

Refer to the exhibit.

```
vEdge1# show control connections
```

PEER TYPE	PEER PROT	PEER SYSTEM IP	SITE ID	DOMAIN ID	PEER PRIVATE IP	PEER PRIV PORT	PEER PUBLIC IP	
vsmart	dtls	10.2.2.2	1	1	10.50.0.5	12446	10.50.0.5	
vsmart	dtls	10.2.2.2	1	1	10.50.0.5	12446	10.50.0.5	
vbond	dtls	0.0.0.0	0	0	10.50.0.9	12346	10.50.0.9	
vbond	dtls	0.0.0.0	0	0	10.50.0.9	12346	10.50.0.9	up
vmanage	dtls	10.1.1.1	1	0	10.50.0.1	12446	10.50.0.1	

An organization is testing a Cisco SD-WAN solution and decided to have the control plane established first and not the data plane at the time of migration. Which configuration achieves this goal?

A)

CONFIGURATION CERTIFICATES						
WAN Edge List		Controllers				
<div>Send to Controllers</div> <div>Click Send to Controllers to sync the WAN Edge list on all controllers.</div>						
<div>Search Options</div> <div>Total Rows: 20</div>						
State	Device Model	Chassis Number	Hostname	IP Address	Serial No./Token	Validate
	vEdge Cloud	9a0cfea0-a463-7dec-c5...	vEdge1	10.10.10.1	BC42AE30	Invalid Staging Valid
	vEdge Cloud	cc5daa8e-9bb1-7c9d-f5...	vEdge2	10.10.10.2	E1F0754E	Invalid Staging Valid
	vEdge Cloud	d7b14bb6-f718-b111-8...	vEdge3	10.10.10.3	F5DA0A8D	Invalid Staging Valid
	vEdge Cloud	92b4f92b-daff-7ce2-c3...	vEdge4	10.10.10.4	BD992059	Invalid Staging Valid
	vEdge Cloud	0183a420-e93e-41f7-6f...	vEdge5	10.10.10.5	FA460EE6	Invalid Staging Valid

B)

CONFIGURATION DEVICES							
WAN Edge List		Controllers					
<div>Change Mode</div> <div>Upload WAN Edge List</div> <div>Export Bootstrap Configuration</div> <div>Sync Smart Account</div>							
<div>CLI mode</div> <div>vManage mode</div> <div>Search Options</div> <div>Total Rows: 20</div>							
State	Device Model	Chassis Number	Serial No./Token	Hostname	System IP	Site ID	Mode
	vEdge Cloud	9a0cfea0-a463-7dec-c586-85f9d29cd56a	BC42AE30	vEdge1	10.10.10.1	1	vManage
	vEdge Cloud	cc5daa8e-9bb1-7c9d-f545-1a9657a0b0...	E1F0754E	vEdge2	10.10.10.2	2	vManage
	vEdge Cloud	d7b14bb6-f718-b111-8dd5-531fa9c96ba2	F5DA0A8D	vEdge3	10.10.10.3	3	vManage
	vEdge Cloud	92b4f92b-daff-7ce2-c3da-622673be0329	BD992059	vEdge4	10.10.10.4	4	vManage
	vEdge Cloud	0183a420-e93e-41f7-6fc6-f74bb8754881	FA460EE6	vEdge5	10.10.10.5	4	vManage

C)


```
vpn 0
dns 208.67.222.222 primary
allow-service dns
allow-service sshd
allow-service netconf
```

B)

```
vpn 0
allow-service dns
allow-service sshd
allow-service netconf
```

C)

```
vpn 512
dns 208.67.222.222 primary
allow-service dns
allow-service sshd
allow-service netconf
```

D)

```
vpn 512
allow-service dns
allow-service sshd
allow-service netconf
```

- A. Option A
- B. Option B
- C. Option C
- D. Option D

Answer: A

NEW QUESTION 68

What is the purpose of “vpn 0” in the configuration template when onboarding a WAN edge node?

- A. It carries control traffic over secure DTLS or TLS connections between vSmart controllers and vEdge routers, and between vSmart and vBond
- B. It carries control out-of-band network management traffic among the Viptela devices in the overlay network.
- C. It carries control traffic over secure IPsec connections between vSmart controllers and vEdge routers, and between vSmart and vManager
- D. It carries control traffic over secure IPsec connections between vSmart controllers and vEdge routers, and between vSmart and vBond

Answer: A

Explanation:

- VPN 0 is the transport VPN. It carries control traffic over secure DTLS or TLS connections between vSmart controllers and vEdge routers, and between vSmart controllers and vBond orchestrators. Initially, VPN 0 contains all a device's interfaces except for the management interface, and all the interfaces are disabled. For the control plane to establish itself so that the overlay network can function, you must configure WAN transport interfaces in VPN 0.

NEW QUESTION 69

Which Cisco SD-WAN component the initial communication between WAN Edge devices to join the fabric?

- A. WAN Edge Router
- B. vSmart Controller
- C. vManage
- D. vBond Orchestrator

Answer: D

Explanation:

The Cisco vBond Orchestrator orchestrates the initial control connection between Cisco vSmart Controllers and vEdge routers. It creates DTLS tunnels to the Cisco vSmart Controllers and vEdge routers to authenticate each node that is requesting control plane connectivity. This authentication

NEW QUESTION 71

An administrator wants to create a policy to add a traffic policer called "politer-ccnp" to police data traffic on the WAN Edge. Which configuration accomplishes this task in vSmart?

- A.

```
vpn 1
interface ge 0/4
policer policer-ccnp in
```
- B.

```
policy
data-policy policy-ccnp
vpn-list list-ccnp
sequence number
action accept
set policer policer-ccnp
```
- C.

```
policy
access-list list-ccnp
sequence number
action accept
policer policer-ccnp
```
- D.

```
vpn 1
interface ge 0/4
policer policer-ccnp out
```

- A. Option A
 B. Option B
 C. Option C
 D. Option D

Answer: B

NEW QUESTION 73

A customer has 1 to 100 service VPNs and wants to restrict outbound updates for VPN1 Which control policy configuration restricts these updates?

A)

```
policy
lists
vpn-list VPN2-100
vpn 2-100
!
control-policy restrict_2-100
sequence 10
match route
vpn-list VPN2-100
!
action reject
!
default-action accept
```

B)

```
policy
lists
vpn-list VPN2-100
vpn 2-100
!
control-policy restrict_2-100
sequence 10
match route
vpn-list VPN2-100
!
action reject
!
default-action accept
```

C)

```
policy
lists
vpn-list VPN1
vpn 1
!
control-policy restrict_1
sequence 10
match route
vpn-list VPN1
!
action reject
!
default-action accept
```

D)


```
Policy
lists
vpn-list restricted_vpn
vpn 2-100
!
!
vpn-membership restrict_1
sequence 10
match vpn-list restricted_vpn
action reject
!
!
default-action accept
!
```

- A. Option A
- B. Option B
- C. Option C
- D. Option D

Answer: C

NEW QUESTION 77

What is the main purpose of using TLOC extensions in WAN Edge router configuration?

- A. creates hardware-level transport redundancy at the local site
- B. creates an IPsec tunnel from WAN Edge to vBond Orchestrator
- C. transports control traffic to a redundant vSmart Controller
- D. transports control traffic w remote-site WAN Edge routers

Answer: D

NEW QUESTION 81

An enterprise is continuously adding new sites to its Cisco SD-WAN network. It must configure any cached routes flushed when OMP peers have lost adjacency
Which configuration allows the cached OMP routes to be flushed after every 24 hours from its routing table?

A)

Basic Configuration Timers Advertise

Graceful Restart for OMP

On

Off

Overlay AS Number

24

Graceful Restart Timer (seconds)

43200

Number of Paths Advertised per Prefix

4

ECMP Limit

4

Shutdown

Yes

No

B)

Basic Configuration Timers Advertise

Graceful Restart for OMP

On

off

Overlay AS Number

1

Graceful Restart Timer (seconds)

86400

Number of Paths Advertised per Prefix

3

ECMP Limit

4

Shutdown

Yes

No

C)

Basic Configuration

Timers

Advertise

Graceful Restart for OMP

On

Off

Overlay AS Number

24

Graceful Restart Timer (seconds)

600000

Number of Paths Advertised per Prefix

2

ECMP Limit

2

Shutdown

Yes

No

D)

Basic Configuration

Timers

Advertise

Graceful Restart for OMP

On

Off

Overlay AS Number

24

Graceful Restart Timer (seconds)

43200

Number of Paths Advertised per Prefix

2

ECMP Limit

2

Shutdown

Yes

No

- A. Option A
- B. Option B
- C. Option C
- D. Option D

Answer: B

NEW QUESTION 85

Which vBond system configuration under VPN 0 allows for a routable public IP address even if the DNS name, hostname, or IP address of the vBond orchestrator are omitted?

- A. local
- B. vbond-only
- C. dns-name
- D. WAN

Answer: A

NEW QUESTION 87

An enterprise deployed a Cisco SD-WAN solution with hub-and-spoke topology using MPLS as the preferred network over the Internet. A network engineer must implement an application-aware routing policy to allow ICMP traffic to be load-balanced over both the available links. Which configuration meets the requirement?

```
app-route-policy _VPN_10_AAR
vpn-list VPN_50
sequence 21
match
app-list ICMP
source-ip 0.0.0.0/0
!
action
sla-class ICMP_SLA preferred-color public-internet
sla-class ICMP_SLA preferred-color mpls
```

B)

```
app-route-policy _VPN_10_AAR
vpn-list VPN_50
sequence 21
match
app-list ICMP
source-ip 0.0.0.0/0
!
action
sla-class ICMP_SLA
```

C)

```
app-route-policy _VPN_10_AAR
vpn-list VPN_50
sequence 21
match
app-list ICMP
source-ip 0.0.0.0/0
!
action
sla-class ICMP_SLA preferred-color mpls
backup-sla-preferred-color public-internet
```

D)

```
app-route-policy _VPN_10_AAR
vpn-list VPN_50
sequence 21
match
app-list ICMP
source-ip 0.0.0.0/0
!
action
sla-class ICMP_SLA preferred-color mpls public-internet
```

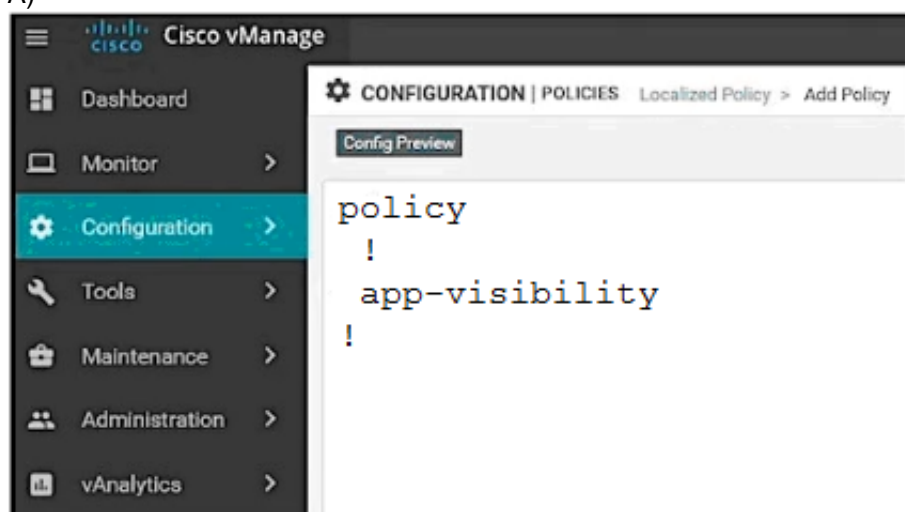
- A. Option A
- B. Option B
- C. Option C
- D. Option D

Answer: C

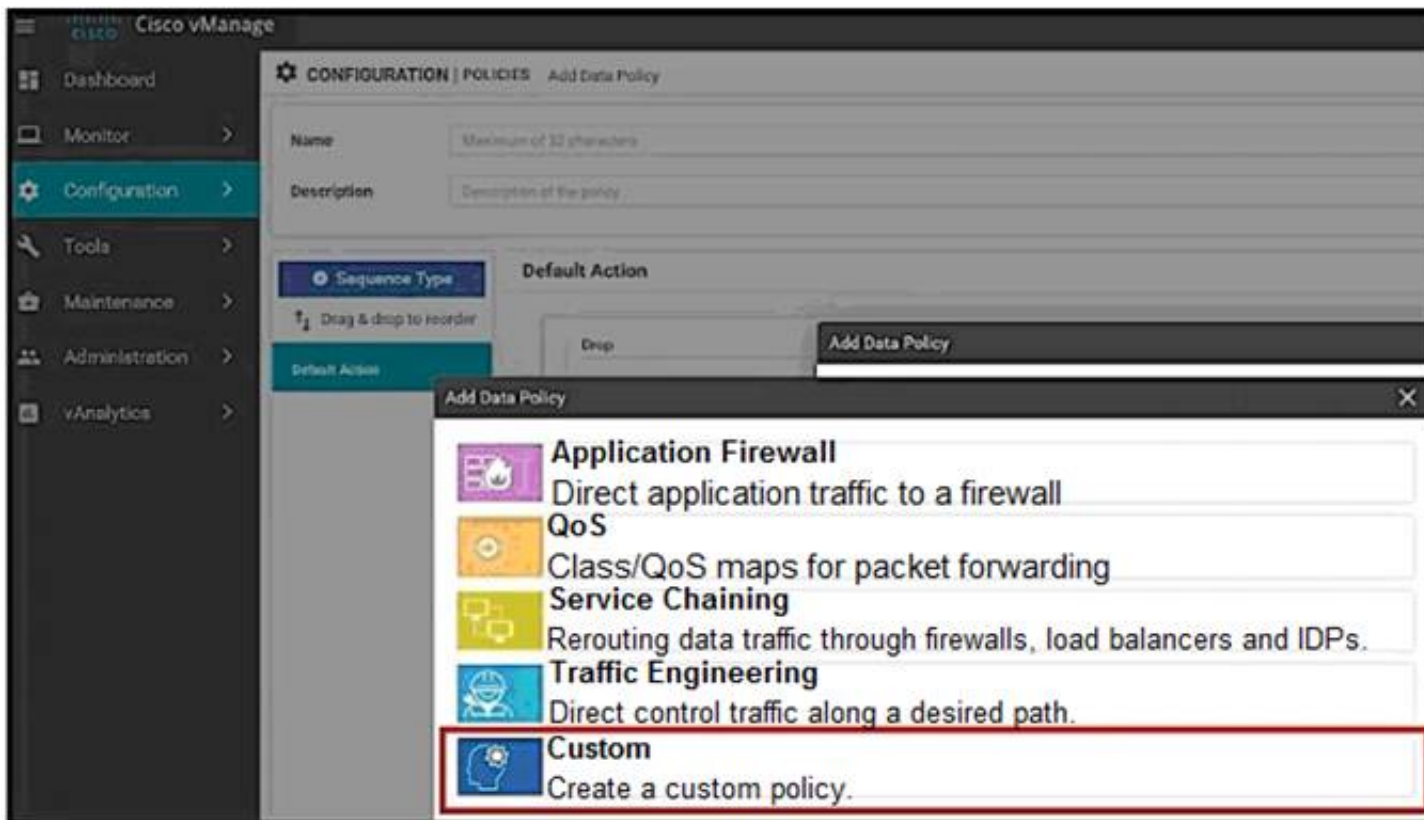
NEW QUESTION 92

An organization wants to discover, monitor, and track the applications running on the WAN Edge device on the LAN Which configuration achieves this goal?

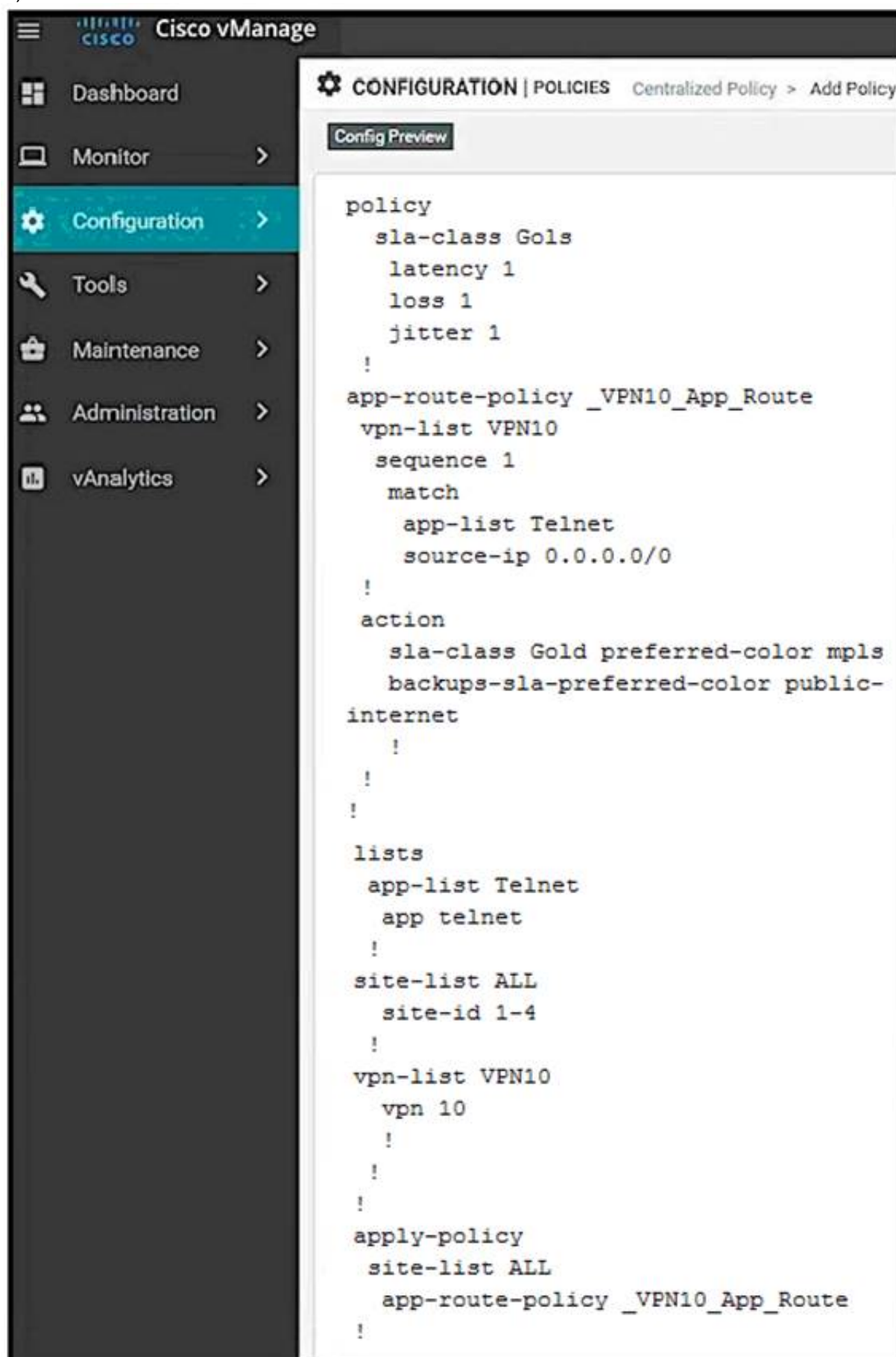
A)



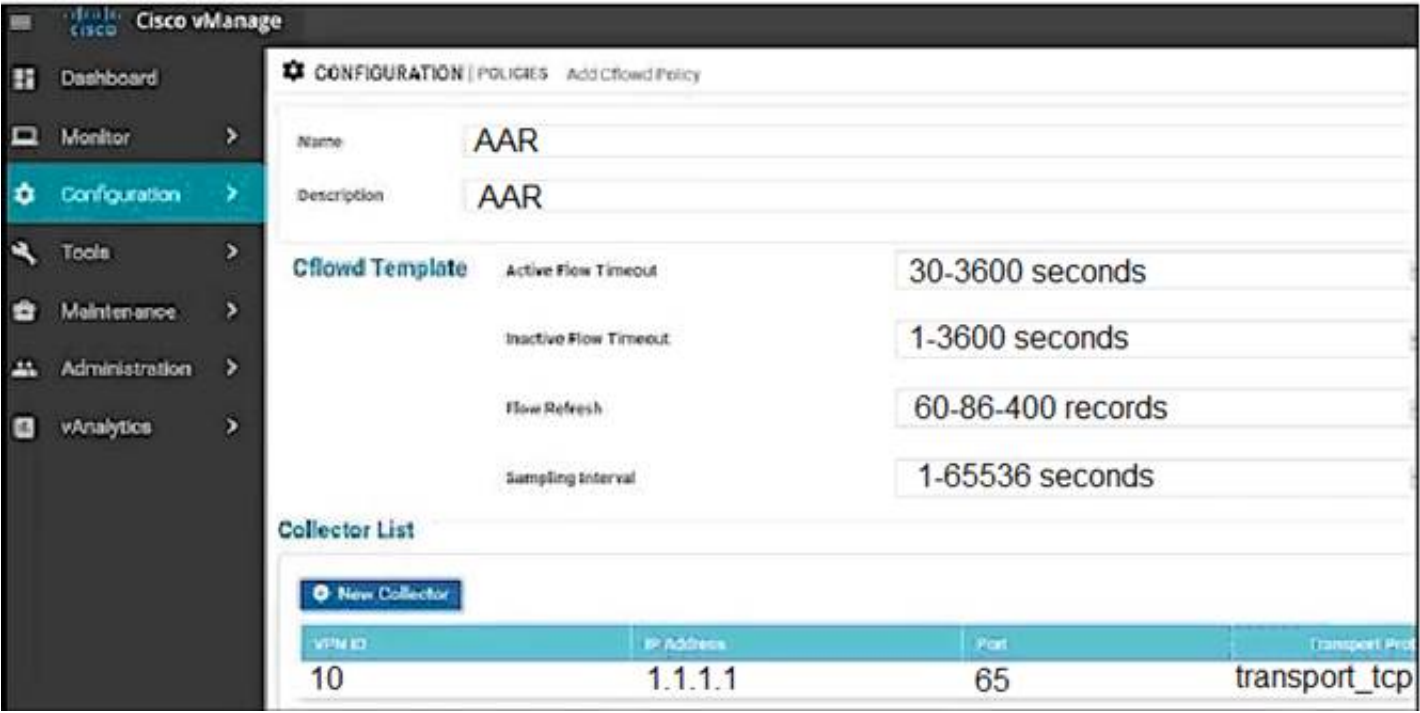
B)



C)



D)



- A. Option A
- B. Option B
- C. Option C
- D. Option D

Answer: D

NEW QUESTION 97

Which two performance data details are provided by Cisco SO-WAN vAnalytics? (Choose two)

- A. jitter loss and latency for data tunnels
- B. application quality of experience score from zero to ten
- C. detail on total cost of ownership for the fabric
- D. certificate authority status (health and expiration dates) for all controllers
- E. view devices connected to a vManage NMS

Answer: AB

NEW QUESTION 100

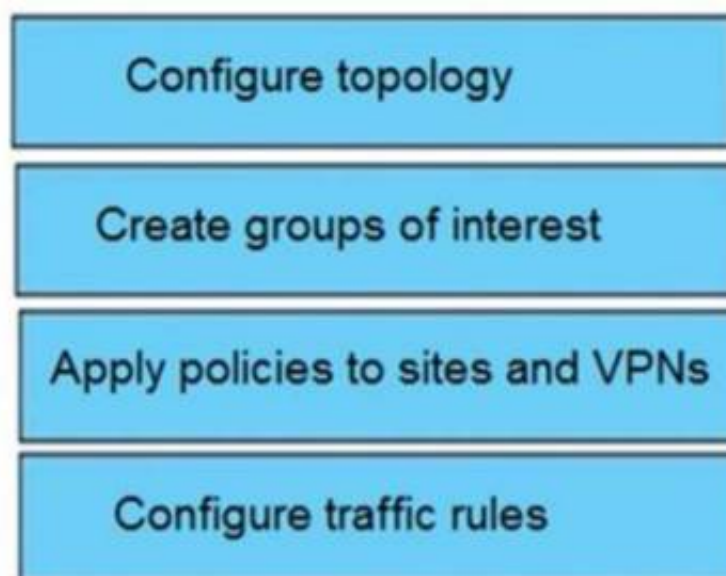
Drag and drop the vManage policy configuration procedures from the left onto the correct definitions on the right.

Create groups of interest	Create the network structure to which the policy applies
Configure traffic rules	Create lists that group together related items that an engineer can call in the match or action components of a policy
Configure topology	Associate a policy with sites and VPNs in the overlay network
Apply policies to sites and VPNs	Create the match and action conditions of a policy

- A. Mastered
- B. Not Mastered

Answer: A

Explanation:



NEW QUESTION 104

An engineer must use data prefixes to configure centralized data policies using the vManage policy configuration wizard. What is the first step to accomplish this task?

- A. Create groups of interest
- B. Configure network topology.
- C. Configure traffic rules.
- D. Apply policies to sites and VPNs.

Answer: A

NEW QUESTION 108

A customer must upgrade the cisco SD-WAN devices and controllers from version 19.2 to version 20.3. The devices include WAN Edge cloud, vManage, vSmart, and vBond. Which types of image types of image files are needed for this upgrade?

- A. one file for vManage and one file for all other devices with extension tar.gz
- B. one file for vManage, one for vSmart and one for vBond + WAN Edge Cloud with extension.bin
- C. one file for vManaga, one for vSmart and one for vBond + WAN Edge Cloud with extension tar.gz
- D. one file for vManaga and one file for all other devices with extension .bin

Answer: C

Explanation:

<https://software.cisco.com/download/home/286320995/type/286321394/release/20.3.3.1>

NEW QUESTION 110

Which command verifies a policy that has been pushed to the vEdge router?

- A. vEdge# show running-config data policy
- B. vEdge# show policy from-vsmart
- C. vSmart# show running-config policy
- D. vSmart# show running-config apply-policy

Answer: B

NEW QUESTION 113

A vEdge platform is sending VRRP advertisement messages every 10 seconds. Which value configures the router back to the default timer?

- A. 2 seconds
- B. 3 seconds
- C. 1 second
- D. 5 seconds

Answer: C

NEW QUESTION 115

In which Cisco SD-WAN deployment scenario does Cisco Umbrella SIG deliver the most value?

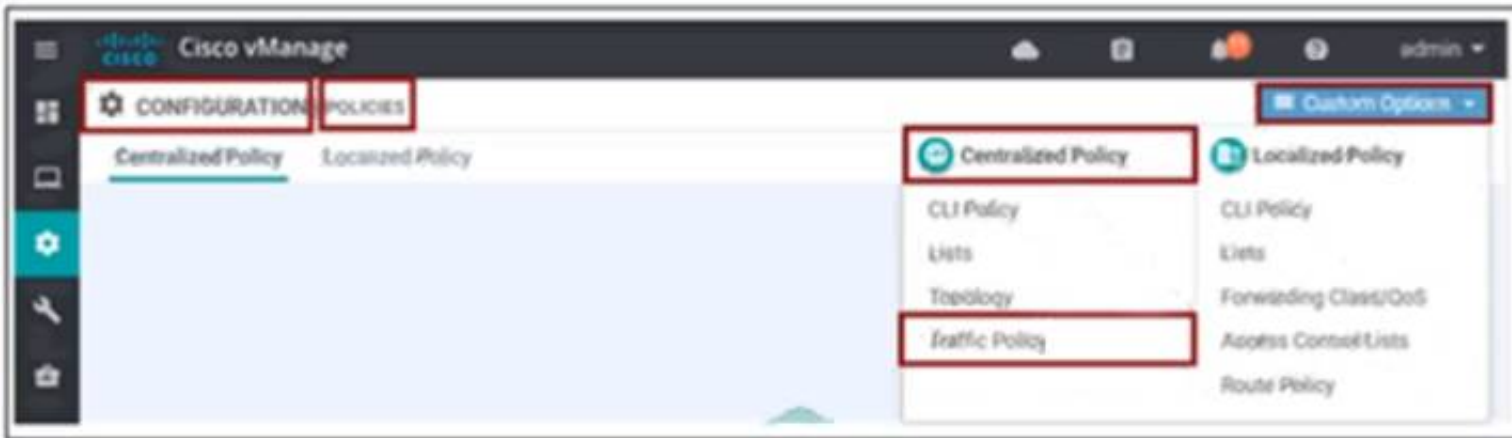
- A. when a centralized Internet breakout solution is implemented
- B. when resource-intensive security operations are offloaded from entry-level WAN Edge devices
- C. when the identity of several WAN Edge devices is verified throughout the network throughout the network

Answer: B

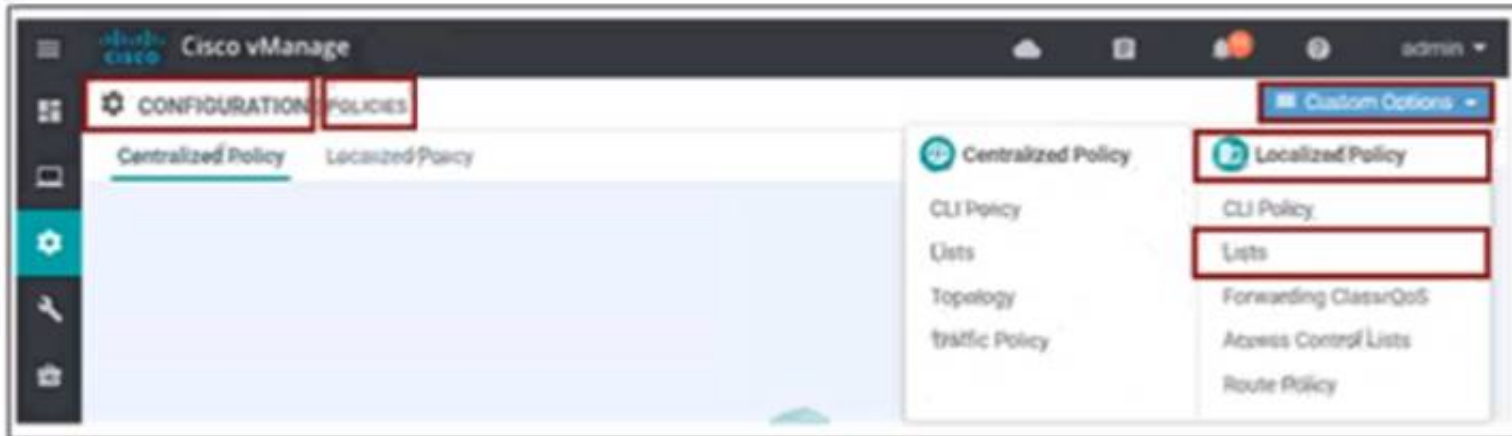
NEW QUESTION 119

An engineer must create a QoS policy by creating a class map and assigning it to the LLQ queue on a WAN Edge router Which configuration accomplishes the task?

A)



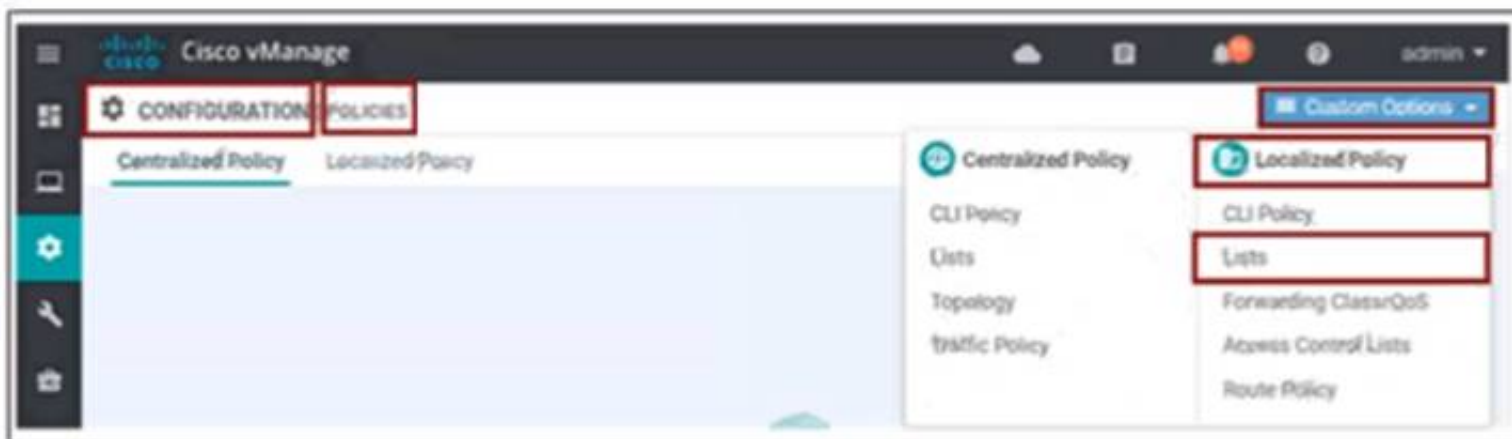
B)



C)



D)



- A. Option A
- B. Option B
- C. Option C
- D. Option D

Answer: D

NEW QUESTION 121

A policy is created to influence routing path in the network using a group of prefixes. What policy application will achieve this goal when applied to a site List?

- A. vpn-membership policy
- B. cflowd-template
- C. app-route policy
- D. control-policy

Answer: D

NEW QUESTION 125

Which VManage dashboard is used to monitor the next-hop reachability between two devices traversing through OMP for a service VPN?

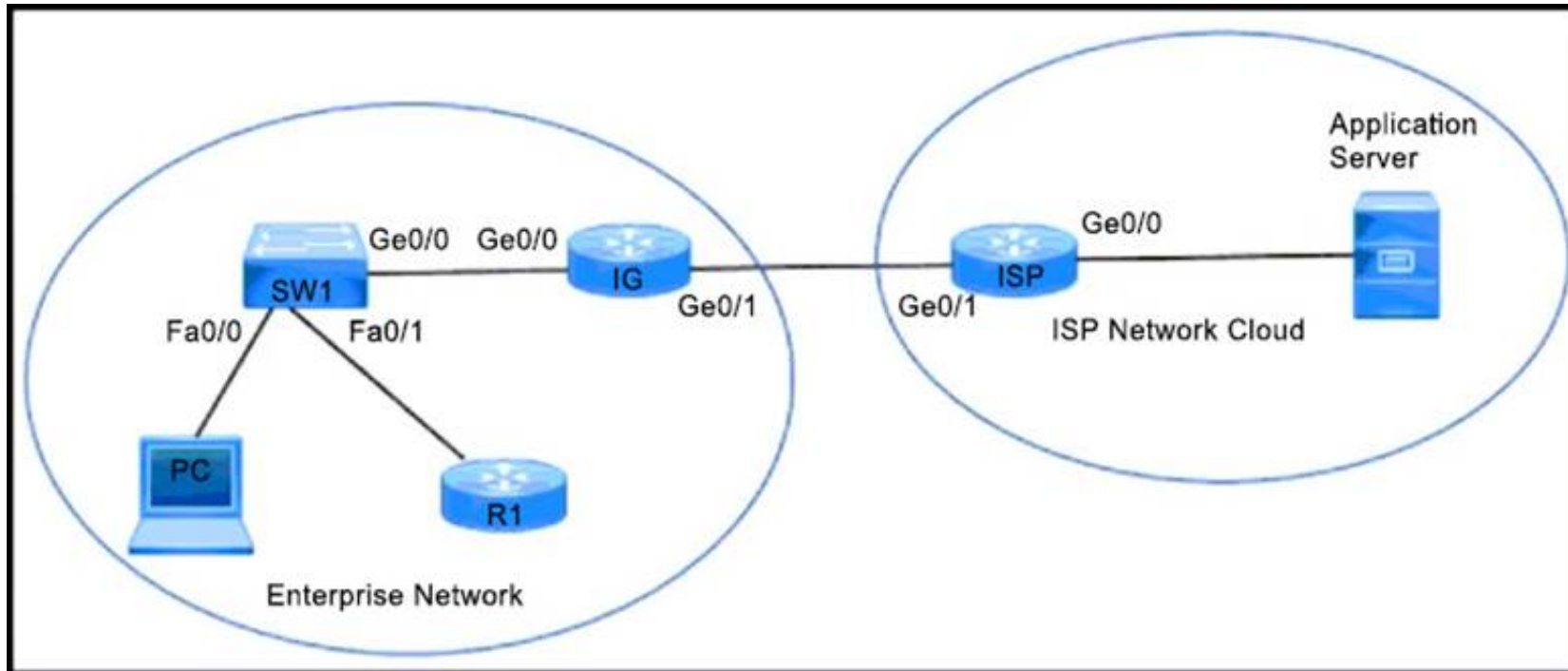
- A. Troubleshooting > App Route Visualization
- B. Troubleshooting > Tunnel Health

- C. Troubleshooting > Simulate Flows
- D. Troubleshooting > Packet Capture

Answer: C

NEW QUESTION 127

Refer to the exhibit.



An enterprise network is connected with an ISP network on an 80 Mbps bandwidth link. The network operation team observes 100 Mbps traffic on the 1Gig-ISP link during peak hours. Which configuration provides bandwidth control to avoid traffic congestion during peak hours?

A)

```
policy-map CUS_PMAP
class CUS_CMAP
  police 80000000 300000
!
interface gigabitethernet 0/0
description *** TO SW ***
ip address 10.0.10.5 255.255.255.0
service-policy input CUS_PMAPd
```

B)

```
policy-map SHAPE_MAP
class class-default
  shape average 80000000
!
interface gigabitethernet 0/1
description *** TO ISP ***
ip address 10.0.20.5 255.255.255.0
service-policy output SHAPE_MAP
```

C)

```
policy-map CUS_PMAP
class CUS_CMAP
  police 80000000 300000
!
interface gigabitethernet 0/0
description *** TO ISP ***
ip address 10.0.20.1 255.255.255.0
service-policy input CUS_PMAP
```

D)

```
policy-map SHAPE_MAP
class class-default
  shape average 80000000
!
interface gigabitethernet 0/1
description *** TO IG rack B455:A882:G718 ***
ip address 10.0.20.5 255.255.255.0
```

- A. Option A
- B. Option B
- C. Option C
- D. Option D

Answer: B

NEW QUESTION 131

Which actions must be taken to allow certain departments to require firewall protection when interacting with data center network without including other departments? (Choose two.)

- A. Use classification policing and marking
- B. Apply data policies at vEdge.
- C. Deploy a service-chained firewall service per VPN
- D. The regional hub advertises the availability of the firewall service
- E. Advertise to vSmart controllers

Answer: CD

NEW QUESTION 136

A voice packet requires a latency of 50 msec. Which policy is configured to ensure that a voice packet is always sent on the link with less than a 50 msec delay?

- A. centralized control
- B. localized data
- C. localized control
- D. centralized data








Answer: D

Explanation:

<https://www.cisco.com/c/en/us/td/docs/routers/sdwan/configuration/policies/ios-xe-17/policies-book-xe/applicat>

NEW QUESTION 140

Refer to the exhibit

Address Family	<div><div></div><div><input checked="" type="radio"/> On</div><div><input type="radio"/> Off</div></div>
Address Family	<div><div></div><div>ipv4-unicast </div></div>
Maximum Number of Prefixes	<div><div></div><div></div></div>
Route Policy In	<div><div></div><div><div><input type="radio"/> On</div><div><input checked="" type="radio"/> Off</div></div></div>
Route Policy Out	<div><div></div><div><input checked="" type="radio"/> On</div><div><input type="radio"/> Off</div></div>
Policy Name	<div><div></div><div>eBGP_Community_Policy</div></div>

The engineering must assign tags to 3 Of its 74 server networks as soon as they are advertised to peers These server network must not be advertised AS which configuration fulfil the requirement?

A)

```
policy
route-policy eBGP_Community_Policy
sequence 1
match
address Community_Prefix
action accept
set
community 999:65000 no-advertise
default-action reject
lists
prefix-list Community_Prefix
ip-prefix 20.20.20.0/24
ip-prefix 21.21.21.0/24
ip-prefix 22.22.22.0/24
```

B)


```
policy
route-policy eBGP_Community_Policy
sequence 1
match
address Community_Prefix
action accept
set
community 999:65000 local-as
default-action reject
lists
prefix-list Community_Prefix
ip-prefix 20.20.20.0/24
ip-prefix 21.21.21.0/24
ip-prefix 22.22.22.0/24
```

C)

```
policy
route-policy eBGP_Community_Policy
sequence 1
match
address Community_Prefix
action accept
set
community 999:65000 no-export
default-action accept
lists
prefix-list Community_Prefix
ip-prefix 20.20.20.0/24
ip-prefix 21.21.21.0/24
ip-prefix 22.22.22.0/24
```

D)

```
policy
route-policy eBGP_Community_Policy
sequence 1
match
address Community_Prefix
action accept
set
community 999:65000 no-advertise
default-action accept
lists
prefix-list Community_Prefix
ip-prefix 20.20.20.0/24
ip-prefix 21.21.21.0/24
ip-prefix 22.22.22.0/24
```

- A. Option A
- B. Option B
- C. Option C
- D. Option D

Answer: D

NEW QUESTION 144

In a customer retail network with multiple data centers, what does the network administrator use to create a regional hub topology?

- A. control policy on vManage
- B. control policy on vSmart
- C. data policy on vSmart
- D. app route policy on vSmart

Answer: A

NEW QUESTION 147

How are policies deployed on cloud-hosted Cisco SD-WAN controllers?

- A. Policies are created on vSmart and enforced by vSmart
- B. Policies are created on vSmart and enforced by vManage
- C. Policies are created on vManage and enforced by vManage.
- D. Policies are created on vManage and enforced by vSmart

Answer: A

NEW QUESTION 151

Which component of the Cisco SD-WAN architecture oversees the control plane of overlay network to establish, adjust, and maintain the connections between the WAN Edge devices that form the Cisco SD-WAN fabric?

- A. APIC-EM
- B. vManage
- C. vSmart
- D. vBond

Answer: C

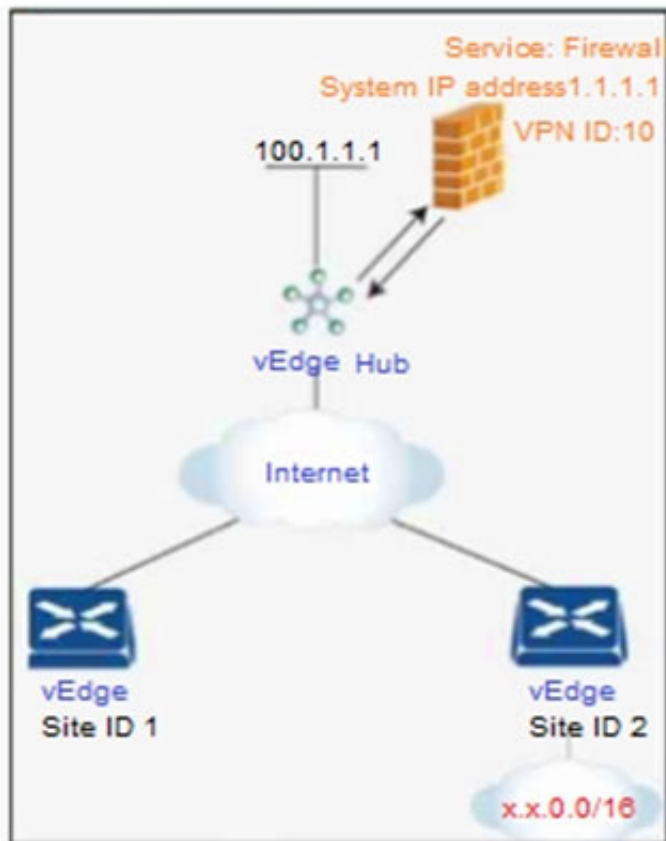
Explanation:

Cisco vSmart Controller

The Cisco vSmart Controller oversees the control plane of the Cisco SD-WAN overlay network, establishing, adjusting, and maintaining the connections that form the Cisco SD-WAN fabric.

NEW QUESTION 152

Refer to the exhibit.



An engineer is configuring service chaining. Which set of configurations is required for all traffic from Site ID 1 going toward Site ID 2 to get filtered through the firewall on the hub site?

- A)
- ```

vpn 20
 service FW address 1.1.1.1
 policy
 lists
 site-list firewall-sites
 site-id 1
 control-policy firewall-service
 sequence 10
 match route
 site-id 2
 action accept
 set service FW vpn 20
 default-action accept
 apply-policy
 site-list firewall-sites control-policy firewall-service out

```
- B)
- ```

vpn 10
 service FW address 1.1.1.1
 policy
  lists
   site-list firewall-sites
    site-id 1
  control-policy firewall-service
   sequence 10
    match route
     site-id 2
    action accept
     set service FW vpn 10
  default-action accept
 apply-policy
  site-list firewall-sites control-policy firewall-service out
  
```
- C)
- ```

vpn 10
 service FW address 1.1.1.1
 policy
 lists
 site-list firewall-sites
 site-id 1
 control-policy firewall-service
 sequence 10
 match route
 site-id 2
 action accept
 set service FW vpn 20
 default-action accept
 apply-policy
 site-list firewall-sites control-policy firewall-service out

```
- D)

```

vpn 10
service FW address 1.1.1.2
policy
lists
site-list firewall-sites
site-id 1
control-policy firewall-service
sequence 10
match route
site-id 2
action accept
set service FW vpn 10
default-action accept
apply-policy
site-list firewall-sites control-policy firewall-service out

```

- A. Option A
- B. Option B
- C. Option C
- D. Option D

**Answer: B**

**Explanation:**

<https://www.cisco.com/c/en/us/td/docs/routers/sdwan/configuration/policies/vedge/policies-book/service-chainin>

**NEW QUESTION 156**

Which template configures the out-of-band management VPN?

A)

| Section             | Parameter      | Type            | Variable/value                |
|---------------------|----------------|-----------------|-------------------------------|
| Basic configuration | Shutdown       | Global          | No                            |
|                     | Interface Name | Global          | loopback0                     |
| IPv4 configuration  | IPv4 Address   | Radio button    | Static                        |
|                     | IPv4 Address   | Device Specific | vpn1_lo0_int_ip_addr/maskbits |

B)

| Section             | Parameter      | Type            | Variable/value                  |
|---------------------|----------------|-----------------|---------------------------------|
| Basic configuration | Shutdown       | Global          | No                              |
|                     | Interface Name | Device Specific | vpn512_mgt_int_mgmt0_or_gex/x   |
|                     | Description    | Global          | Management Interface            |
| IPv4 configuration  | IPv4 Address   | Radio button    | Static                          |
|                     | IPv4 Address   | Device Specific | vpn512_mgt_int_ip_addr/maskbits |

C)

| Section             | Parameter | Type            | Variable/value              |
|---------------------|-----------|-----------------|-----------------------------|
| Basic configuration | VPN       | Global          | 512                         |
|                     | Name      | Global          | Management VPN              |
| IPv4 Route          | Prefix    | Global          | 0.0.0.0/0                   |
|                     | Gateway   | Radio button    | Next Hop                    |
|                     | Next Hop  | Device Specific | vpn512_mgt_next_hop_ip_addr |

D)

| Section             | Parameter      | Type            | Variable/value                 |
|---------------------|----------------|-----------------|--------------------------------|
| Basic configuration | Shutdown       | Device Specific | vpn1_lan_int2_shutdown         |
|                     | Interface Name | Device Specific | vpn1_lan_int2_gex/x            |
| IPv4 configuration  | Description    | Device Specific | vpn1_lan_int2_description      |
|                     | IPv4 Address   | Radio button    | Static                         |
|                     | IPv4 Address   | Device Specific | vpn1_lan_int2_ip_addr/maskbits |

- A. Option A
- B. Option B
- C. Option C
- D. Option D

**Answer:** C

#### NEW QUESTION 157

Which command displays BFD session summary information per TLOC on vEdge routers?

- A. show bfd history
- B. show bfd summary
- C. show bfd sessions
- D. show bfd tloc-summary-list

**Answer:** D

#### NEW QUESTION 159

Which protocol is used to measure jitter, loss, and latency on SD-WAN overlay tunnels?

- A. QoE
- B. OMP
- C. BGP
- D. BFD

**Answer:** D

#### NEW QUESTION 164

Which SD-WAN component detects path performance information in the organization to report the issue to the service provider at site ID:S4288T5E44F04?

- A. vAnalytics
- B. vManage NMS
- C. vBond Orchestrator
- D. Cisco DNA

**Answer:** B

#### NEW QUESTION 165

Drag and drop the policies from the left onto the correct policy types on the right.

strict hub-and-spoke topology

perform shaping on traffic

service firewall insertion

prefer voice and video via MPLS link

Control Policy

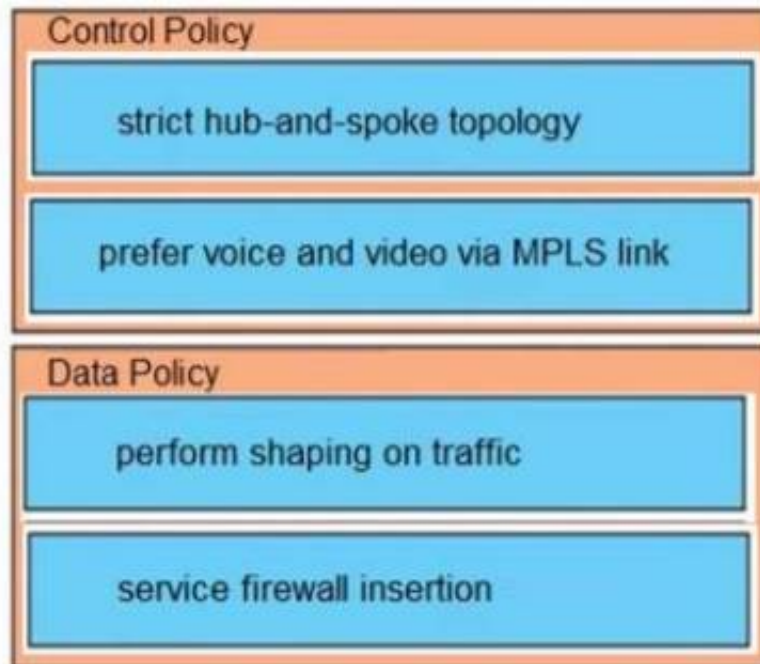
Data Policy

- A. Mastered
- B. Not Mastered



**Answer:** A

**Explanation:**



#### NEW QUESTION 167

Which two features does the application firewall provide? (Choose two.)

- A. classification of 1400+ layer 7 applications
- B. blocks traffic by application or application-family
- C. numbered sequences of match-action pairs
- D. classification of 1000+ layer 4 applications
- E. application match parameters

**Answer:** AB

**Explanation:**

This application aware firewall feature provides the following benefits:

- Application visibility and granular control
- Classification of 1400+ layer 7 applications
- Allows or blocks traffic by application, category, application-family or application-group

#### NEW QUESTION 168

Which OMP route is selected for equal OMP route preference values on WAN Edge routers?

- A. route with higher TLOC preference value
- B. route with origin type of connected
- C. route with origin type of static
- D. route with lower TLOC preference value

**Answer:** A

#### NEW QUESTION 172

Which routing protocol is used to exchange control plane information between vSmart controllers and WAN Edge routers in the Cisco SD-WAN secure extensible network?

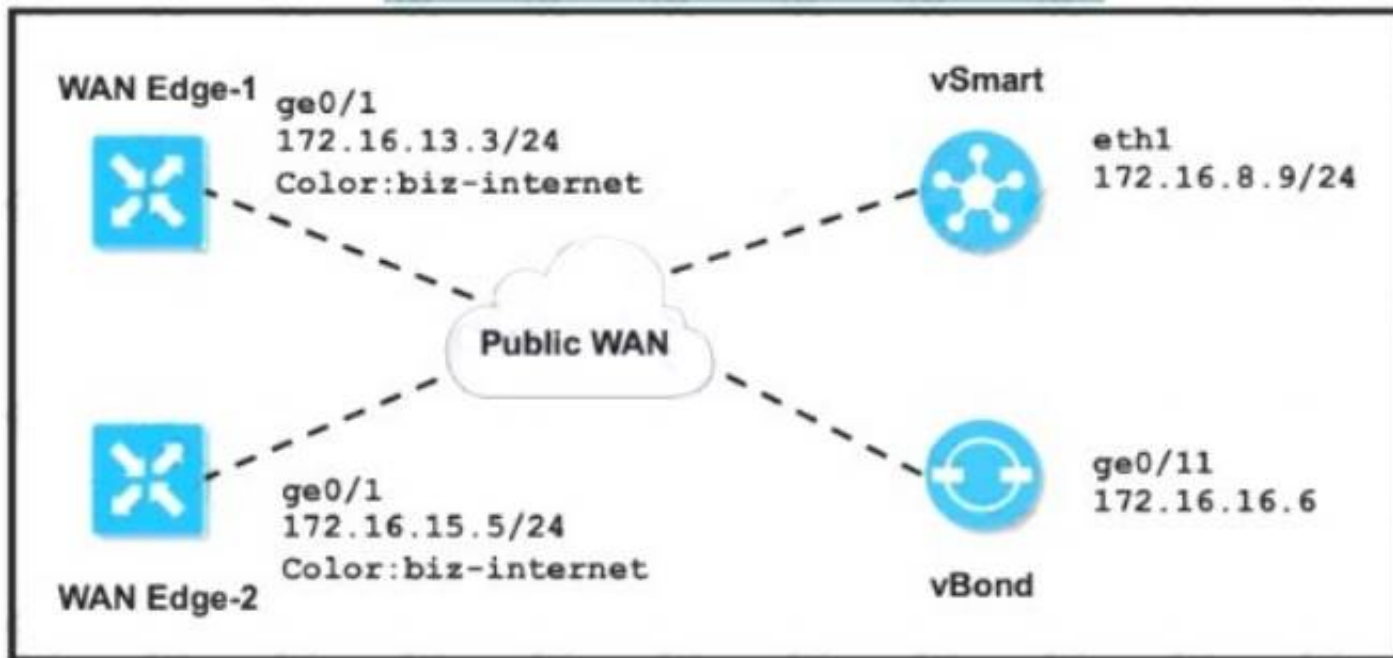
- A. BGP
- B. OSPF
- C. BFD
- D. OMP

**Answer:** D

#### NEW QUESTION 177

Refer to the exhibit.





The tunnel interface configuration on both WAN Edge routers is:

```

vpn 0
interface ge0/1
tunnel-interface
encapsulation ipsec
color biz-internet
allow-service dhcp
allow-service dns
allow-service icmp
no allow-service sshd
no allow-service ntp
no allow-service stun
!
no shutdown

```

Which configuration for WAN Edge routers will connect to the Internet?

- ☐ vpn 0  
interface ge0/1  
ip address 172.16.15.5/24  
!  
ip route 0.0.0.0/0 172.16.13.1
- ☒ vpn 0  
interface ge0/1  
ip address 172.16.13.3/24  
!  
ip route 0.0.0.0/0 172.16.13.1
- ☐ vpn 0  
interface ge0/1  
ip address 172.16.13.3/24  
!  
ip route 0.0.0.0/0 172.16.8.1
- ☐ vpn 0  
interface ge0/1  
ip address 172.16.15.5/24  
!  
ip route 0.0.0.0/0 172.16.8.1

- A. Option A
- B. Option B
- C. Option C
- D. Option D

**Answer: B**

**Explanation:**

[https://sdwan-docs.cisco.com/Product\\_Documentation/Software\\_Features/SD-WAN\\_Release\\_16.3/02System\\_a](https://sdwan-docs.cisco.com/Product_Documentation/Software_Features/SD-WAN_Release_16.3/02System_a)

#### NEW QUESTION 180

A customer wants to use AWS for Cisco SD-WAN IaaS services by deploying virtual SD-WAN routers in a transit AWS VPC. The transit VPC then connects via site-to-site IPsec tunnels to an AWS transit gateway. Which transit VPC connects via site-to-site IPsec tunnels to an AWS transit gateway?

- A. Cisco Cloud onRamp for Multicloud
- B. Cisco Cloud onRamp for SaaS
- C. Cisco Cloud onRamp for Colocation
- D. Cisco Cloud onRamp for IaaS

**Answer: D**

#### NEW QUESTION 181

What is the order of operations for software upgrades of Cisco SD-WAN nodes'?

- A. vBond vManage vSmart WAN Edge
- B. vManage vBond WAN Edg
- C. vSmart
- D. vManage vSmart, vBond, WAN Edge
- E. vManage vBond vSraart WAN Edge

**Answer: D**

**NEW QUESTION 182**

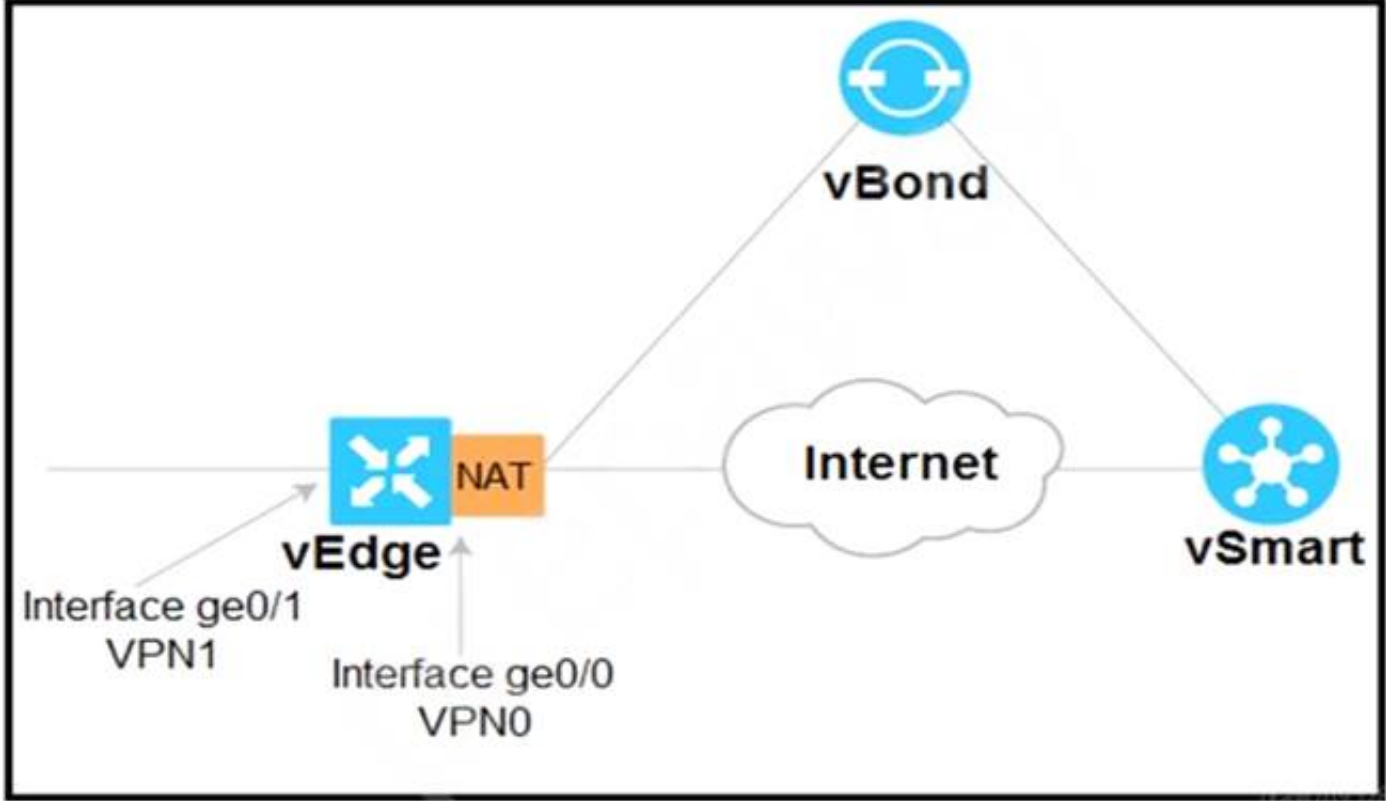
Which two vRoute attributes should be matched or set in vSmart policies and modified by data policies? (Choose two.)

- A. site ID
- B. preference
- C. VPN
- D. TLOC
- E. origin

**Answer:** BC

**NEW QUESTION 183**

Refer to the exhibit



Which configuration sets up direct Internet access for VPN 1?

- ☒ vpn 1
 

```

 ...
 interface ge0/1
 ...
 nat
 !
 no shutdown
 ...
 vpn 0
 ...
 ip route 0.0.0.0/0 vpn 1

```
- ☐ vpn 1
 

```

 ...
 interface ge0/0
 nat
 !
 no shutdown
 ...
 vpn 0
 ...
 ip route 0.0.0.0 vpn 1

```
- ☐ vpn 0
 

```

 ...
 interface ge0/1
 ...
 ip nat
 !
 no shutdown
 ...
 vpn 1
 ...
 ip route 0.0.0.0/0 vpn 0

```

- A. Option A
- B. Option B
- C. Option C

**Answer:** C

**NEW QUESTION 184**

.....

## Thank You for Trying Our Product

### We offer two products:

1st - We have Practice Tests Software with Actual Exam Questions

2nd - Questions and Answers in PDF Format

### 300-415 Practice Exam Features:

- \* 300-415 Questions and Answers Updated Frequently
- \* 300-415 Practice Questions Verified by Expert Senior Certified Staff
- \* 300-415 Most Realistic Questions that Guarantee you a Pass on Your First Try
- \* 300-415 Practice Test Questions in Multiple Choice Formats and Updates for 1 Year

**100% Actual & Verified — Instant Download, Please Click**  
**[Order The 300-415 Practice Test Here](#)**