

NSE5_FMG-7.2 Dumps

Fortinet NSE 5 - FortiManager 7.2

https://www.certleader.com/NSE5_FMG-7.2-dumps.html



NEW QUESTION 1

- (Topic 1)

In the event that the primary FortiManager fails, which of the following actions must be performed to return the FortiManager HA to a working state?

- A. Secondary device with highest priority will automatically be promoted to the primary role, and manually reconfigure all other secondary devices to point to the new primary device
- B. Reboot one of the secondary devices to promote it automatically to the primary role, and reconfigure all other secondary devices to point to the new primary device.
- C. Manually promote one of the secondary devices to the primary role, and reconfigure all other secondary devices to point to the new primary device.
- D. FortiManager HA state transition is transparent to administrators and does not require any reconfiguration.

Answer: C

Explanation:

FortiManager_6.4_Study_Guide-Online – page 346

FortiManager HA doesn't support IP takeover where an HA state transition is transparent to administrators. If a failure of the primary occurs, the administrator must take corrective action to resolve the problem that may include invoking the state transition. If the primary device fails, the administrator must do the following in order to return the FortiManager HA to a working state:

- * 1. Manually reconfigure one of the secondary devices to become the primary device
- * 2. Reconfigure all other secondary devices to point to the new primary device

NEW QUESTION 2

- (Topic 1)

An administrator would like to create an SD-WAN using central management in the Training ADOM.

To create an SD-WAN using central management, which two steps must be completed? (Choose two.)

- A. Specify a gateway address when you create a default SD-WAN static route
- B. Enable SD-WAN central management in the Training ADOM
- C. Configure and install the SD-WAN firewall policy and SD-WAN static route before installing the SD-WAN template settings
- D. Remove all the interface references such as routes or policies that will be a part of SD-WAN member interfaces

Answer: BD

Explanation:

Reference: <https://docs.fortinet.com/document/fortigate/6.0.0/cookbook/676493/removing-existing-configuration-references-to-interfaces>

NEW QUESTION 3

- (Topic 1)

Which two conditions trigger FortiManager to create a new revision history? (Choose two.)

- A. When configuration revision is reverted to previous revision in the revision history
- B. When FortiManager installs device-level changes to a managed device
- C. When FortiManager is auto-updated with configuration changes made directly on a managed device
- D. When changes to device-level database is made on FortiManager

Answer: BC

Explanation:

Reference: https://help.fortinet.com/fmgr/50hlp/56/5-6-1/FortiManager_Admin_Guide/1000_Device%20Manager/1500_Manage_device_configs/0600_Manage%20config%20rev%20history.htm

NEW QUESTION 4

- (Topic 1)

An administrator runs the reload failure command: `diagnose test deploymanager reload config`

`<deviceid>` on FortiManager. What does this command do?

- A. It downloads the latest configuration from the specified FortiGate and performs a reload operation on the device database.
- B. It installs the latest configuration on the specified FortiGate and updates the revision history database.
- C. It compares and provides differences in configuration on FortiManager with the current running configuration of the specified FortiGate.
- D. It installs the provisioning template configuration on the specified FortiGate.

Answer: A

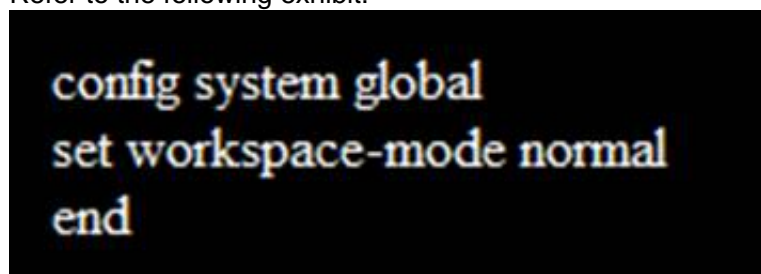
Explanation:

Reference: <https://community.fortinet.com/t5/FortiManager/Technical-Note-Retrieve-configuration-file-using-CLI-from-a/ta-p/191000?externalID=FD36387>

NEW QUESTION 5

- (Topic 1)

Refer to the following exhibit:



```
config system global
set workspace-mode normal
end
```

Which of the following statements are true based on this configuration? (Choose two.)

- A. The same administrator can lock more than one ADOM at the same time
- B. Ungraceful closed sessions will keep the ADOM in a locked state until the administrator session times out
- C. Unlocking an ADOM will submit configuration changes automatically to the approval administrator
- D. Unlocking an ADOM will install configuration automatically on managed devices

Answer: AB

Explanation:

Reference: http://help.fortinet.com/fmgr/cli/5-6-2/Document/0800_ADOMs/200_Configuring+.htm

NEW QUESTION 6

- (Topic 1)

You are moving managed FortiGate devices from one ADOM to a new ADOM. Which statement correctly describes the expected result?

- A. Any pending device settings will be installed automatically
- B. Any unused objects from a previous ADOM are moved to the new ADOM automatically
- C. The shared policy package will not be moved to the new ADOM
- D. Policy packages will be imported into the new ADOM automatically

Answer: C

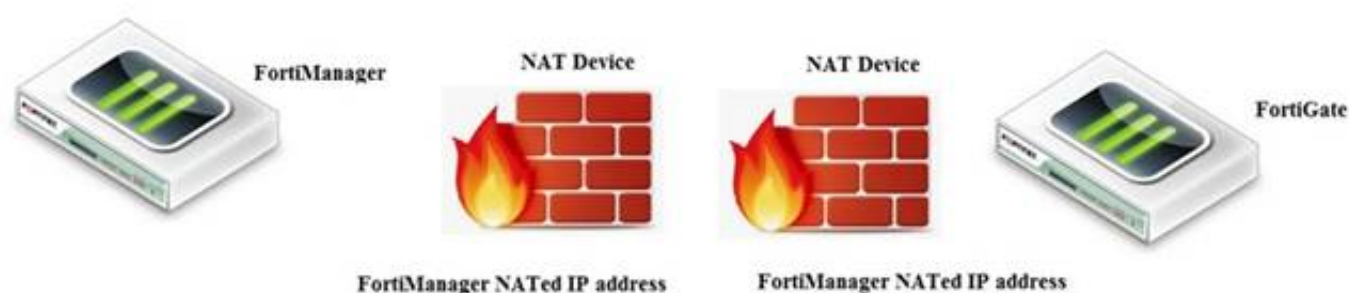
Explanation:

Reference: <https://community.fortinet.com/t5/FortiManager/Technical-Note-How-to-move-objects-to-new-ADOM-on-FortiManager/ta-p/198342>

NEW QUESTION 7

- (Topic 1)

View the following exhibit.



If both FortiManager and FortiGate are behind the NAT devices, what are the two expected results? (Choose two.)

- A. FortiGate is discovered by FortiManager through the FortiGate NATed IP address.
- B. FortiGate can announce itself to FortiManager only if the FortiManager IP address is configured on FortiGate under central management.
- C. During discovery, the FortiManager NATed IP address is not set by default on FortiGate.
- D. If the FCFM tunnel is torn down, FortiManager will try to re-establish the FGFM tunnel.

Answer: AC

Explanation:

FortiManager can discover FortiGate through a NATed FortiGate IP address. If a FortiManager NATed IP address is configured on FortiGate, then FortiGate can announce itself to FortiManager. FortiManager will not attempt to re-establish the FGFM tunnel to the FortiGate NATed IP address, if the FGFM tunnel is interrupted. Just like it was in the NATed FortiManager scenario, the FortiManager NATed IP address in this scenario is not configured under FortiGate central management configuration.

NEW QUESTION 8

- (Topic 1)

What will happen if FortiAnalyzer features are enabled on FortiManager?

- A. FortiManager will reboot
- B. FortiManager will send the logging configuration to the managed devices so the managed devices will start sending logs to FortiManager
- C. FortiManager will enable ADOMs automatically to collect logs from non-FortiGate devices
- D. FortiManager can be used only as a logging device.

Answer: A

Explanation:

Reference: https://help.fortinet.com/fmgr/50hlp/56/5-6-1/FortiManager_Admin_Guide/1800_FAZ%20Features/0200_Enable%20FAZ%20Features.htm

NEW QUESTION 9

- (Topic 1)

Refer to the exhibit.

Start to import config from device(Local-FortiGate) vdom(root) to adom(My_ADOM), package(Local-FortiGate_root)

"firewall service category",SKIPPED,"(name=General, oid=697, DUPLICATE)"

"firewall address",SUCCESS,"(name=LOCAL_SUBNET, oid=684, new object)"

"firewall service custom",SUCCESS,"(name=ALL, oid=863, update previous object)"

"firewall policy",SUCCESS,"(name=1, oid = 1090, new object)"

Which statement about the object named ALL is true?

- A. FortiManager updated the object ALL using the FortiGate value in its database.
- B. FortiManager installed the object ALL with the updated value.
- C. FortiManager created the object ALL as a unique entity in its database, which can be only used by this managed FortiGate.
- D. FortiManager updated the object ALL using the FortiManager value in its database.

Answer: A

NEW QUESTION 10

- (Topic 1)

In addition to the default ADOMs, an administrator has created a new ADOM named Training for FortiGate devices. The administrator sent a device registration to FortiManager from a remote FortiGate. Which one of the following statements is true?

- A. The FortiGate will be added automatically to the default ADOM named FortiGate.
- B. The FortiGate will be automatically added to the Training ADOM.
- C. By default, the unregistered FortiGate will appear in the root ADOM.
- D. The FortiManager administrator must add the unregistered device manually to the unregistered device manually to the Training ADOM using the Add Device wizard

Answer: C

Explanation:

Reference: <https://docs.fortinet.com/document/fortimanager/7.0.0/administration-guide/718923/root-adom>

NEW QUESTION 10

- (Topic 2)

What does a policy package status of Conflict indicate?

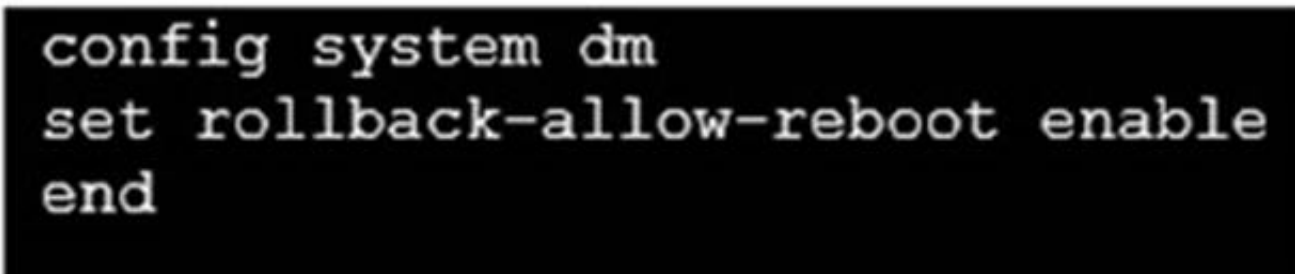
- A. The policy package reports inconsistencies and conflicts during a Policy Consistency Check.
- B. The policy package does not have a FortiGate as the installation target.
- C. The policy package configuration has been changed on both FortiManager and the managed device independently.
- D. The policy configuration has never been imported after a device was registered on FortiManager.

Answer: C

NEW QUESTION 11

- (Topic 2)

Refer to the exhibit.



```
config system dm
set rollback-allow-reboot enable
end
```

An administrator has configured the command shown in the exhibit on FortiManager. A configuration change has been installed from FortiManager to the managed FortiGate that causes the FGFM tunnel to go down for more than 15 minutes.

What is the purpose of this command?

- A. It allows FortiGate to unset central management settings.
- B. It allows FortiGate to reboot and recover the previous configuration from its configuration file.
- C. It allows the FortiManager to revert and install a previous configuration revision on the managed FortiGate.
- D. It allows FortiGate to reboot and restore a previously working firmware image.

Answer: B

Explanation:

Reference: <https://docs.fortinet.com/document/fortimanager/6.2.0/fortigate-fortimanager-communicationsprotocol-guide/141304/fgfm-recovery-logic>

NEW QUESTION 16

- (Topic 2)

An administrator configures a new firewall policy on FortiManager and has not yet pushed the changes to the managed FortiGate. In which database will the configuration be saved?

- A. Device-level database
- B. Revision history database
- C. ADOM-level database
- D. Configuration-level database

Answer: C

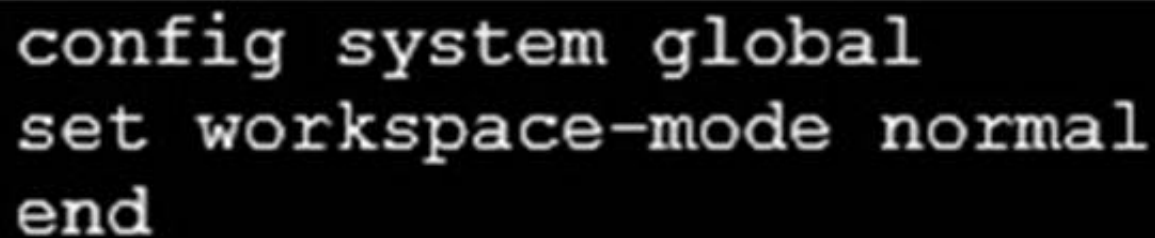
Explanation:

<https://kb.fortinet.com/kb/documentLink.do?externalID=FD47942>

NEW QUESTION 20

- (Topic 2)

Refer to the exhibit.



```
config system global
set workspace-mode normal
end
```

Given the configuration shown in the exhibit, which two statements are true? (Choose two.)

- A. It allows two or more administrators to make configuration changes at the same time, in the same ADOM.
- B. It disables concurrent read-write access to an ADOM.
- C. It allows the same administrator to lock more than one ADOM at the same time.
- D. It is used to validate administrator login attempts through external servers.

Answer: BC

Explanation:

Reference:<https://docs.fortinet.com/document/fortimanager/6.0.4/administration-guide/86456/concurrentadom-access>

NEW QUESTION 22

- (Topic 2)

Which two statements about Security Fabric integration with FortiManager are true? (Choose two.)

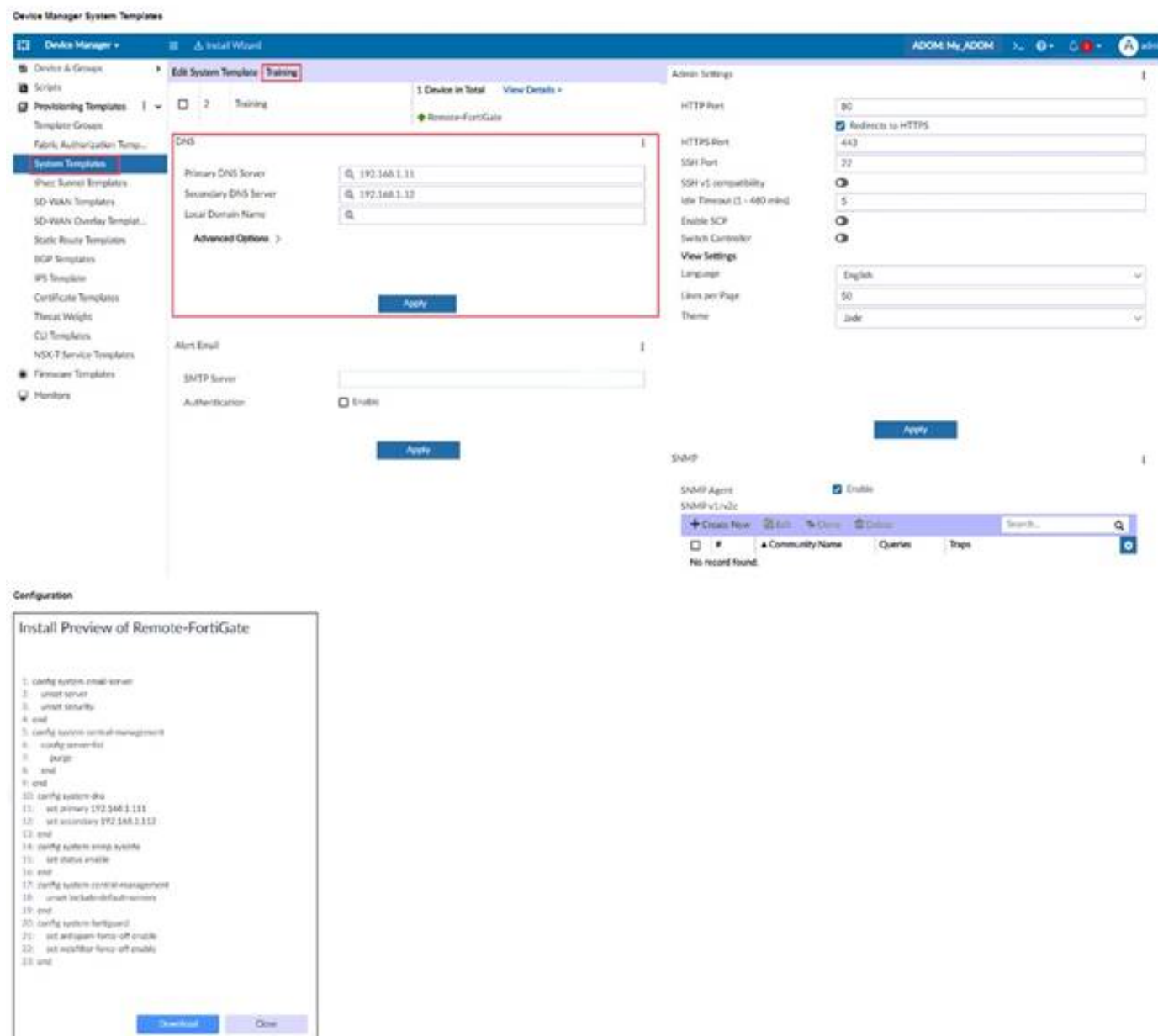
- A. The Security Fabric license, group name and password are required for the FortiManager Security Fabric integration
- B. TheFabric Viewmodule enables you to generate the Security Fabric ratings for Security Fabric devices
- C. The Security Fabric settings are part of the device level settings
- D. TheFabric Viewmodule enables you to view the Security Fabric ratings for Security Fabric devices

Answer: CD

NEW QUESTION 26

- (Topic 3)

Refer to the exhibit.



On FortiManager, an administrator created a new system template named Training with two new DNS addresses. During the installation preview stage, the administrator notices that central-management settings need to be purged. What can be the main reason for the central-management purge command?

- A. The Remote-FortiGate device does not have any DNS server-list configured in the central-management settings.
- B. The DNS addresses in the default system settings are the same as the Training system template.
- C. The ADOM is locked by another administrator.
- D. The Training system template has a default FortiGuard widget.

Answer: A

NEW QUESTION 31

- (Topic 3)

Which two conditions trigger FortiManager to create a new revision history? (Choose two.)

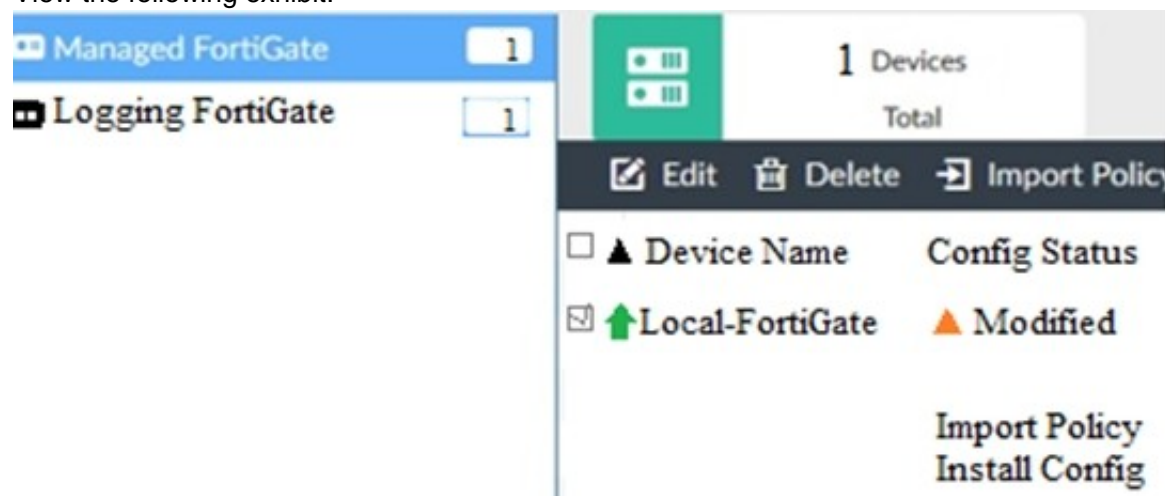
- A. When FortiManager is auto-updated with configuration changes made directly on a managed device
- B. When changes to the device-level database are made on FortiManager
- C. When FortiManager installs device-level changes on a managed device
- D. When a configuration revision is reverted to a previous revision in the revision history

Answer: BC

NEW QUESTION 34

- (Topic 3)

View the following exhibit.



When using Install Config option to install configuration changes to managed FortiGate, which of the following statements are true? (Choose two.)

- A. Once initiated, the install process cannot be canceled and changes will be installed on the managed device
- B. Will not create new revision in the revision history
- C. Installs device-level changes to FortiGate without launching the Install Wizard

D. Provides the option to preview configuration changes prior to installing them

Answer: AC

NEW QUESTION 38

- (Topic 3)

An administrator created a header and footer global policy package and assigned it to an ADOM.

What are two outcomes from this action? (Choose two.)

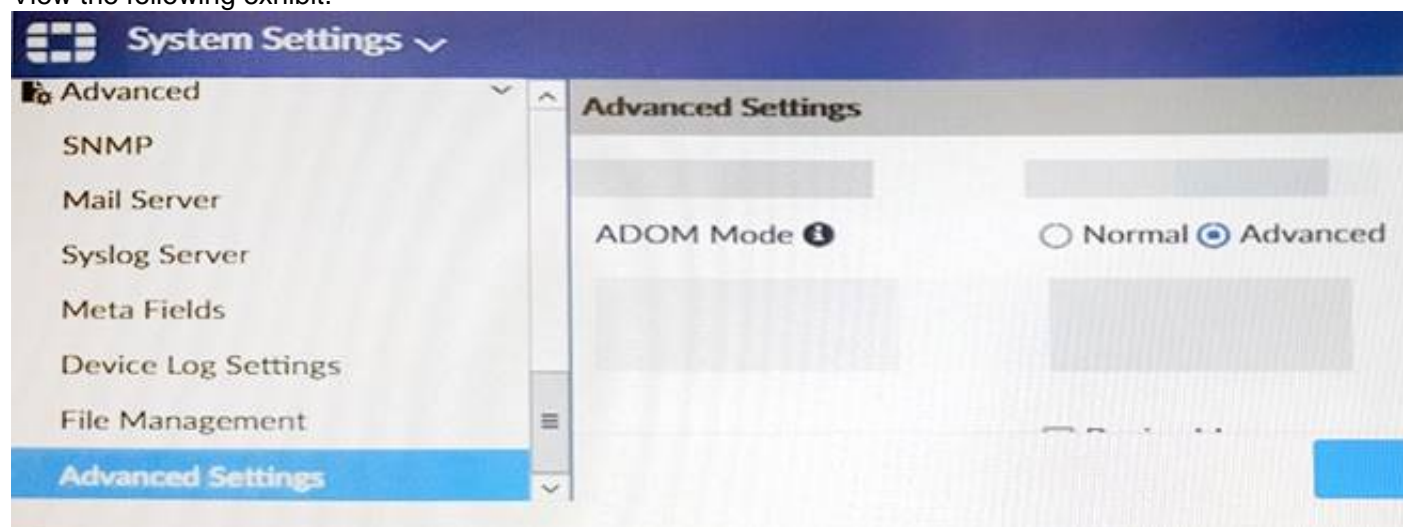
- A. You must manually move the header and footer policies after the policy assignment.
- B. After you assign the global policy package to an ADOM, the policy package is hidden from the ADOM and cannot be viewed.
- C. If you assign an additional global policy package to the same ADOM, FortiManager removes previously assigned policies.
- D. You can edit or delete all the global objects in the global ADOM.

Answer: AD

NEW QUESTION 41

- (Topic 3)

View the following exhibit.



Which of the following statements are true based on this configuration setting? (Choose two.)

- A. This setting will enable the ADOMs feature on FortiManager.
- B. This setting is applied globally to all ADOMs.
- C. This setting will allow assigning different VDOMs from the same FortiGate to different ADOMs.
- D. This setting will allow automatic updates to the policy package configuration for a managed device.

Answer: BC

NEW QUESTION 42

- (Topic 3)

An administrator has assigned a global policy package to custom ADOM1. Then the administrator creates a new policy package Fortinet in the custom ADOM1.

What will happen to the Fortinet policy package when it is created?

- A. You need to assign the global policy package from the global ADOM
- B. You need to reapply the global policy package to the ADOM
- C. it automatically assigns the global policies
- D. You can select the option to assign the global policies

Answer: C

NEW QUESTION 46

- (Topic 3)

Which of the following statements are true regarding reverting to previous revision version from the revision history? (Choose two.)

- A. To push these changes to a managed device, it required an install operation to the managed FortiGate.
- B. Reverting to a previous revision history will generate a new versionID and remove all other history versions.
- C. Reverting to a previous revision history will tag the device settings status as Auto-Update.
- D. It will modify device-level database

Answer: AD

NEW QUESTION 48

- (Topic 3)

Which of the following statements are true regarding VPN Manager? (Choose three.)

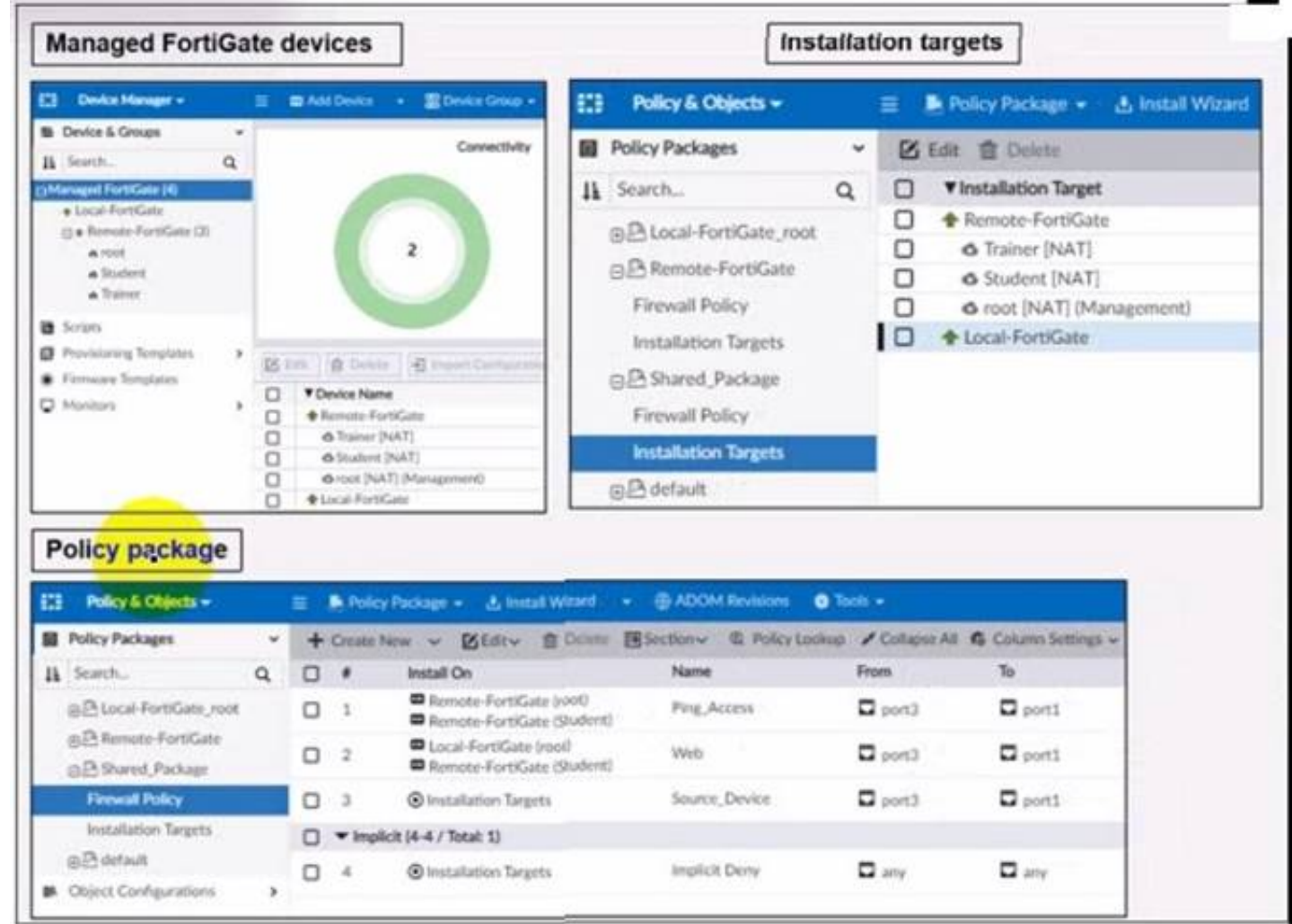
- A. VPN Manager must be enabled on a per ADOM basis.
- B. VPN Manager automatically adds newly-registered devices to a VPN community.
- C. VPN Manager can install common IPsec VPN settings on multiple FortiGate devices at the same time.
- D. Common IPsec settings need to be configured only once in a VPN Community for all managed gateways.
- E. VPN Manager automatically creates all the necessary firewall policies for traffic to be tunneled by IPsec.

Answer: ACD

NEW QUESTION 52

- (Topic 3)

Refer to the exhibit.



Given the configuration shown in the exhibit, what can you conclude from the installation targets in the Install On column? (Choose two)

- A. Policy seq # 2 will not be installed on the Local-FortiGate root VDOM because there is no root VDOM in the Installation Target
- B. Policy seq # 3 will be installed on all managed devices and VDOMs that are listed under Installation Targets
- C. Policy seq # 1 will be installed on the Remote-FortiGate root[NAT] and Student[NAT] VDOMs only
- D. Policy 3 will be installed on all FortiGate devices and vdom belongs to the ADOM
- E. Policy seq # 3 will be skipped because no installation targets are specified

Answer: BC

NEW QUESTION 55

- (Topic 3)

View the following exhibit:

Import Device - Local-FortiGate [root]

When importing configuration from this device, all enabled interfaces require a mapping to an ADOM Level interface. Note, the same ADOM Level interface can map to different interfaces on the each device.

Device Interface	ADOM Interface
port1	WAN
port3	LAN

☒ Add mappings for all unused device interfaces

Next >Cancel

An administrator used the value shown in the exhibit when importing a Local-FortiGate into FortiManager. What name will be used to display the firewall policy for port1?

- A. port1 on FortiGate and WAN on FortiManager
- B. port1 on both FortiGate and FortiManager
- C. WAN zone on FortiGate and WAN zone on FortiManager
- D. WAN zone on FortiGate and WAN interface on FortiManager

Answer: A

NEW QUESTION 60

.....

Thank You for Trying Our Product

* 100% Pass or Money Back

All our products come with a 90-day Money Back Guarantee.

* One year free update

You can enjoy free update one year. 24x7 online support.

* Trusted by Millions

We currently serve more than 30,000,000 customers.

* Shop Securely

All transactions are protected by VeriSign!

100% Pass Your NSE5_FMG-7.2 Exam with Our Prep Materials Via below:

https://www.certleader.com/NSE5_FMG-7.2-dumps.html