



# Microsoft

## Exam Questions AZ-800

Administering Windows Server Hybrid Core Infrastructure

## About ExamBible

*[Your Partner of IT Exam](#)*

## Found in 1998

ExamBible is a company specialized on providing high quality IT exam practice study materials, especially Cisco CCNA, CCDA, CCNP, CCIE, Checkpoint CCSE, CompTIA A+, Network+ certification practice exams and so on. We guarantee that the candidates will not only pass any IT exam at the first attempt but also get profound understanding about the certificates they have got. There are so many alike companies in this industry, however, ExamBible has its unique advantages that other companies could not achieve.

## Our Advances

### \* 99.9% Uptime

All examinations will be up to date.

### \* 24/7 Quality Support

We will provide service round the clock.

### \* 100% Pass Rate

Our guarantee that you will pass the exam.

### \* Unique Gurantee

If you do not pass the exam at the first time, we will not only arrange FULL REFUND for you, but also provide you another exam of your claim, ABSOLUTELY FREE!

### NEW QUESTION 1

SIMULATION - (Topic 4)

Task 9

You plan to create group managed service accounts (gMSAs).

You need to configure the domain to support the creation of gMSAs.

- A. Mastered
- B. Not Mastered

**Answer:** A

#### Explanation:

To configure the domain to support the creation of gMSAs, you need to perform the following steps:

? On a domain controller or a computer that has the Remote Server Administration

Tools (RSAT) installed, open PowerShell as an administrator and run the following command to install the Active Directory module:

Install-WindowsFeature -Name RSAT-AD-PowerShell

? Run the following command to create a Key Distribution Service (KDS) root key, which is required for generating passwords for gMSAs. You only need to do this once per domain:

Add-KdsRootKey -EffectiveImmediately

? Wait for at least 10 hours for the KDS root key to replicate to all domain controllers in the domain. Alternatively, you can use the -EffectiveTime parameter to specify a past date and time for the KDS root key, but this is not recommended for security reasons. For more information, see Add-KdsRootKey.

? After the KDS root key is replicated, you can create and configure gMSAs using

the New-ADServiceAccount and Set-ADServiceAccount cmdlets. For more information, see Create a gMSA and Configure a gMSA.

### NEW QUESTION 2

SIMULATION - (Topic 4)

Task 12

You need to create a Group Policy Object (GPO) named GPO1 that only applies to a group named MemberServers.

- A. Mastered
- B. Not Mastered

**Answer:** A

#### Explanation:

To create a GPO named GPO1 that only applies to a group named MemberServers, you can follow these steps:

? On a domain controller or a computer that has the Remote Server Administration Tools (RSAT) installed, open Group Policy Management from the Administrative Tools menu or by typing gpmmc.msc in the Run box.

? In the left pane, expand your domain and right-click on Group Policy Objects.

Select New to create a new GPO.

? In the New GPO dialog box, enter GPO1 as the Name of the new GPO and click OK. You can also optionally select a source GPO to copy the settings from.

? Right-click on the new GPO and select Edit to open the Group Policy Management Editor. Here, you can configure the settings that you want to apply to the group

under the Computer Configuration and User Configuration nodes. For more information on how to edit a GPO, see Edit a Group Policy Object.

? Close the Group Policy Management Editor and return to the Group Policy Management console. Right-click on the new GPO and select Scope. Here, you can specify the scope of management for the GPO, such as the links, security filtering, and WMI filtering.

? Under the Security Filtering section, click on Authenticated Users and then click on Remove. This will remove the default permission granted to all authenticated users and computers to apply the GPO.

? Click on Add and then type the name of the group that you want to apply the GPO to, such as MemberServers. Click OK to add the group to the security filter.

You can also click on Advanced to browse the list of groups available in the domain.

? Optionally, you can also configure the WMI Filtering section to further filter the GPO based on the Windows Management Instrumentation (WMI) queries. For more information on how to use WMI filtering, see Filter the scope of a GPO by using WMI filters.

? To link the GPO to an organizational unit (OU) or a domain, right-click on the OU

or the domain in the left pane and select Link an Existing GPO. Select the GPO that you created, such as GPO1, and click OK. You can also change the order of preference by using the Move Up and Move Down buttons.

? Wait for the changes to replicate to other domain controllers. You can also force

the update of the GPO by using the gpupdate /force command on the domain controller or the client computers. For more information on how to update a GPO, see Update a Group Policy Object.

Now, you have created a GPO named GPO1 that only applies to a group named MemberServers. You can verify the GPO application by using the gpresult /r command on a member server and checking the Applied Group Policy Objects entry. You can also use the Group Policy Results wizard in the Group Policy Management console to generate a report of the GPO application for a specific computer or user. For more information on how to use the Group Policy Results wizard, see Use the Group Policy Results Wizard.

### NEW QUESTION 3

SIMULATION - (Topic 4)

Task 11

You need to ensure that all DHCP clients that get an IP address from SRV1 will be configured to use DC1 as a DNS server.

- A. Mastered
- B. Not Mastered

**Answer:** A

#### Explanation:

One possible solution to ensure that all DHCP clients that get an IP address from SRV1 will be configured to use DC1 as a DNS server is to use the DHCP scope options. DHCP scope options are settings that apply to all DHCP clients that obtain an IP address from a specific scope. You can use the DHCP scope options to specify the DNS server IP address, as well as other parameters such as the default gateway, the domain name, and the DNS suffix. Here are the steps to

configure the DHCP scope options on SRV1:

? On SRV1, open DNS Manager from the Administrative Tools menu or by typing dnsmgmt.msc in the Run box.

? In the left pane, expand your DHCP server and click on IPv4.

? In the right pane, right-click on the scope that you want to configure and select Properties.

? In the Scope Properties dialog box, click on the DNS tab.

? Check the box Enable DNS dynamic updates according to the settings below. This option allows the DHCP server to register and update the DNS records for the DHCP clients.

? Select the option Always dynamically update DNS records. This option ensures that the DHCP server updates both the A and PTR records for the DHCP clients, regardless of whether they request or support dynamic updates.

? Check the box Discard A and PTR records when lease is deleted. This option allows the DHCP server to delete the DNS records for the DHCP clients when their leases expire or are released.

? Check the box Dynamically update DNS records for DHCP clients that do not request updates. This option allows the DHCP server to update the DNS records for the DHCP clients that do not support dynamic updates, such as legacy or non-Windows clients.

? In the DNS servers section, click on the Add button to add a new DNS server IP address.

? In the Add Server dialog box, enter the IP address of DC1, which is the DNS server that you want to use for the DHCP clients, and click Add.

? Click OK to close the Add Server dialog box and return to the Scope Properties dialog box.

? Click OK to apply the changes and close the Scope Properties dialog box.

Now, all DHCP clients that get an IP address from SRV1 will be configured to use DC1 as a DNS server. You can verify the DNS configuration by using the ipconfig /all command on a DHCP client computer and checking the DNS Servers entry. You can also check the DNS records for the DHCP clients by using the DNS Manager console on DC1.

#### NEW QUESTION 4

SIMULATION - (Topic 4)

Task 4

You need to register SRV1 to sync Azure file shares. The registration must use the 34646045 Storage Sync Service.

The required source files are located in a folder named \\dc1.contoso.com\install.

You do NOT need to configure file share synchronization at this time and you do NOT need to update the agent.

A. Mastered

B. Not Mastered

**Answer: A**

#### Explanation:

One possible solution to register SRV1 to sync Azure file shares using the 34646045 Storage Sync Service is to use the Register-AzStorageSyncServer cmdlet from the Az.StorageSync module. This cmdlet establishes a trust relationship between the server

and the Storage Sync Service, which is required for creating server endpoints and syncing files. Here are the steps to register SRV1

using the cmdlet:

? On SRV1, open PowerShell as an administrator and run the following command to

install the Az.StorageSync module if it is not already installed: Install-Module -Name Az.StorageSync

? Run the following command to import the Az.StorageSync module:

Import-Module -Name Az.StorageSync

? Run the following command to sign in to your Azure account and select the subscription that contains the 34646045 Storage Sync Service:

Connect-AzAccount

Select-AzSubscription -SubscriptionId <your-subscription-id>

? Run the following command to register SRV1 with the 34646045 Storage Sync Service. You need to specify the resource group name and the Storage Sync Service name as parameters:

Register-AzStorageSyncServer -ResourceGroupName <your-resource-group-name> -StorageSyncServiceName 34646045

? Wait for the registration to complete. You can verify the registration status by

checking the Registered servers tab on the Azure portal or by running the following command:

Get-AzStorageSyncServer -ResourceGroupName <your-resource-group-name> -StorageSyncServiceName 34646045

Now, SRV1 is registered with the 34646045 Storage Sync Service and ready to sync Azure file shares. You can create server endpoints on SRV1 and cloud endpoints on the Azure file shares to define the sync topology.

#### NEW QUESTION 5

- (Topic 3)

Note: This question is part of a series of questions that present the same scenario. Each question in the series contains a unique solution that might meet the stated goals. Some question sets might have more than one correct solution, while others might not have a correct solution.

After you answer a question in this section, you will NOT be able to return to it. As a result, these questions will not appear in the review screen.

Your network contains an Active Directory Domain Services (AD DS) domain named contoso.com.

You need to identify which server is the PDC emulator for the domain.

Solution: From Active Directory Domains and Trusts, you right-click Active Directory Domains and Trusts in the console tree, and then select Operations Master.

Does this meet the goal?

A. Yes

B. No

**Answer: B**

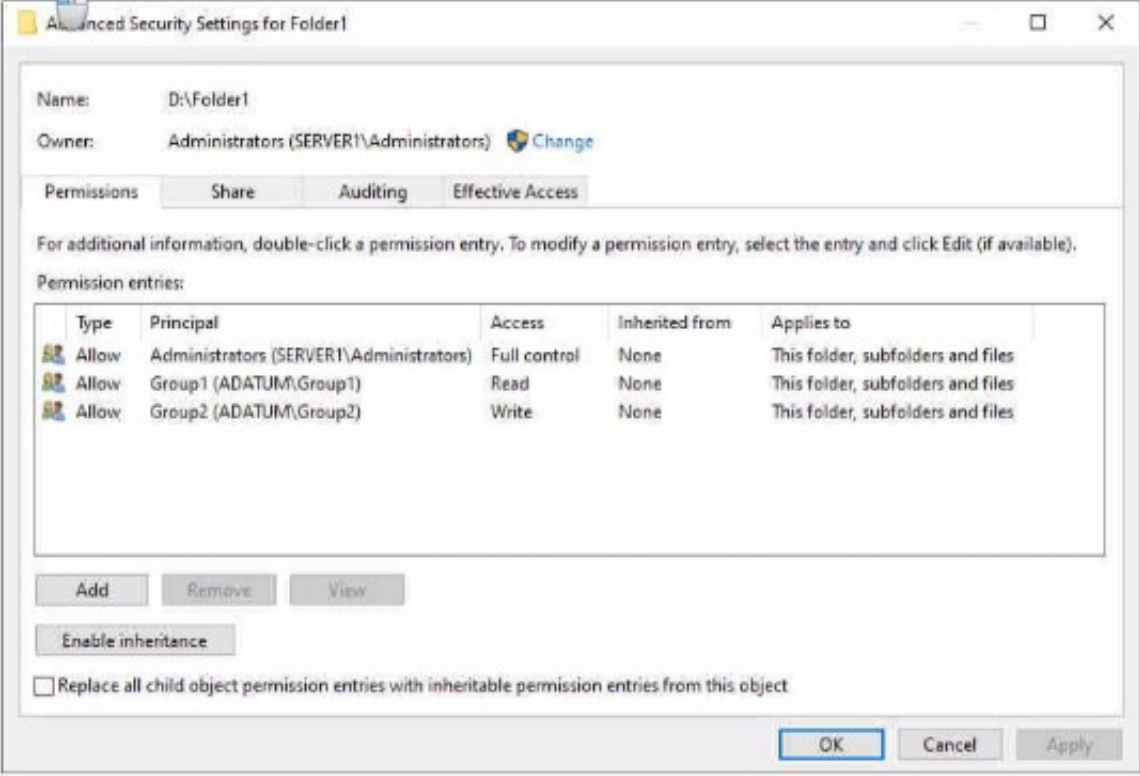
#### NEW QUESTION 6

HOTSPOT - (Topic 3)

Your network contains an Active Directory Domain Services (AD DS) domain named adatum.com. The domain contains a server named Server1 and the users shown in the following table.

Name	Member of
User1	Group1
User2	Group2
User3	Group3

Server1 contains a folder named D:\Folder1. The advanced security settings for Folder 1 are configured as shown in the Permissions exhibit. (Click the Permissions tab.)



Folder1 is shared by using the following configurations

Group	Permission
Group1	Allow - Change
Group3	Allow - Full Control

Path : D:\Folder1  
Name : Share1  
ShareType : FileSystemDirectory  
FolderEnumerationMode : Unrestricted

Answer Area

Statements

Yes

No

User1 can read the files in Share1.

User3 can delete files in Share1.

If User2 connects to \\Server1.adatum.com from File Explorer,

- A. Mastered
- B. Not Mastered

Answer: A

Explanation:

Answer Area

Statements

Yes

No

User1 can read the files in Share1.

User3 can delete files in Share1.

If User2 connects to \\Server1.adatum.com from File Explorer,

NEW QUESTION 7

HOTSPOT - (Topic 3)

Your on-premises network contains an Active Directory Domain Services (AD DS) domain.

The domain contains the servers shown in the following table.

The domain controllers do NOT have internet connectivity.

You plan to implement Azure AD Password Protection for the domain.

You need to deploy Azure AD Password Protection agents. The solution must meet the following requirements:

- All Azure AD Password Protection policies must be enforced.
- Agent updates must be applied automatically.
- Administrative effort must be minimized.

What should you do? To answer select the appropriate options in the answer area. NOTE: Each correct selection is worth one point.



Answer Area

Install the Azure AD Password Protection agent on:

DC1 and DC2 only
DC1 only
DC1 and DC2 only
DC1, DC2, and RODC1

Install the Azure AD Password Protection Proxy on:

Server1
DC1
DC2
RODC1
Server1
Server2

- A. Mastered
- B. Not Mastered

**Answer:** A

**Explanation:**  
Answer Area

Install the Azure AD Password Protection agent on: DC1 and DC2 only

Install the Azure AD Password Protection Proxy on: Server1

**NEW QUESTION 8**

- (Topic 3)

You have a Windows Server container host named Server 1 and a container image named Image1. You need to start a container from image1. The solution must run the container on a Hyper- V virtual machine. Which parameter should you specify when you run the docker run command?

- A. --expose
- B. --privileged
- C. --runtime
- D. --entrypoint
- E. --isolation

**Answer:** D

**Explanation:**

Reference:

<https://docs.microsoft.com/en-us/virtualization/windowscontainers/manage-containers/hyperv-container>

**NEW QUESTION 9**

- (Topic 3)

You have an Azure virtual machine named VM1 that runs Windows Server. You have an Azure subscription that has Microsoft Defender for Cloud enabled. You need to ensure that you can use the Azure Policy guest configuration feature to manage VM1. What should you do?

- A. Add the PowerShell Desired State Configuration (DSC) extension to VM1.
- B. Configure VM1 to use a user-assigned managed identity.
- C. Configure VM1 to use a system-assigned managed identity.
- D. Add the Custom Script Extension to VM1.

**Answer:** C

**Explanation:**

Reference:

<https://docs.microsoft.com/en-us/azure/virtual-machines/extensions/guest-configuration>


**NEW QUESTION 10**

DRAG DROP - (Topic 3)

You have a server named Server1 that has Windows Admin Center installed. The certificate used by Windows Admin Center was obtained from a certification authority (CA). The certificate expires.

You need to replace the certificate.

Which three actions should you perform in sequence? To answer, move the appropriate actions from the list of actions to the answer area and arrange them in the correct order.

Actions	Answer Area
Copy the certificate thumbprint.	
From Internet Information Services (IIS) Manager, bind a certificate.	
Rerun <b>Windows Admin Center Setup</b> and select <b>Change</b> .	
Rerun <b>Windows Admin Center Setup</b> and select <b>Repair</b> .	
Rerun <b>Windows Admin Center Setup</b> and select <b>Remove</b> .	

- A. Mastered  
B. Not Mastered

Answer: A

Explanation:

Actions	Answer Area
Copy the certificate thumbprint.	From Internet Information Services (IIS) Manager, bind a certificate.
From Internet Information Services (IIS) Manager, bind a certificate.	Copy the certificate thumbprint.
Rerun <b>Windows Admin Center Setup</b> and select <b>Change</b> .	Rerun <b>Windows Admin Center Setup</b> and select <b>Change</b> .
Rerun <b>Windows Admin Center Setup</b> and select <b>Repair</b> .	
Rerun <b>Windows Admin Center Setup</b> and select <b>Remove</b> .	

NEW QUESTION 10

- (Topic 3)

You have an Azure virtual machine named Server1 that runs a network management application. Server1 has the following network configuration.

- \* Network interface.Nic1
- \* IP address 10.1.1.1/24
- \* Connected to: Vnet1/Subnet1

You need connect Server1 to an additional subnet named Vnet1/Subnet2. What should you do?

- A. Create a private endpoint on Subnet2  
B. Add a network interface to server1.  
C. Modify the IP configurations of Nic1.  
D. Add an IP configuration to Nic1.

Answer: B

NEW QUESTION 12

HOTSPOT - (Topic 3)

You plan w deploy an Azure virtual machine that win run Windows Server. The virtual machine will host an Active Directory Domain Services (AD DS) domain controller and a drive named f: on a new virtual disk.

You need to configure storage foe the virtual machine. The solution must meet the following requirements

- Maximize resiliency for AD DS.
- Prevent accidental data loss.

How should you configure the storage? To answer, select the appropriate options in the answer area.

NOTE: Each correct selection is worth one point.

Answer Area

Volume for the AD DS database:

Caching configuration for the volume that hosts the database:

Answer:

Answer Area

Volume for the AD DS database:

Caching configuration for the volume that hosts the database:

- A. Mastered
- B. Not Mastered

Answer: A

### NEW QUESTION 16

- (Topic 3)

You have an on-premises server named Server 1 that runs Windows Server. You have an Azure subscription that contains a virtual network named VNet1. You need to connect Server1 to VNet1 by using Azure Network Adapter. What should you use?

- A. the Azure portal
- B. Azure AD Connect
- C. Device Manager
- D. Windows Admin Center

Answer: B

### NEW QUESTION 21

HOTSPOT - (Topic 3)

Your network contains an Active Directory Domain Services (AD DS) domain. The domain contains the domain controllers shown in the following table.

Name	Description
DC1	Has the schema master, infrastructure master, and domain naming master roles
DC2	Has the PDC emulator and RID master roles and is a global catalog server
DC3	None

You need to configure DC3 to be the authoritative time server for the domain.

Which operations master role should you transfer to DC3, and which console should you use? To answer, select the appropriate options in the answer area.

NOTE: Each correct selection is worth one point.

Answer Area

Role:

Console:

- A. Mastered
- B. Not Mastered

Answer: A

Explanation:



Answer Area

Role: 

PDC emulator  
Domain naming master  
Infrastructure master  
PDC emulator  
RID master  
Schema master

Console: 

Active Directory Users and Computers  
Active Directory Admin  
Active Directory Doma  
Active Directory Sites  
Active Directory Users and Computers

NEW QUESTION 23

HOTSPOT - (Topic 3)

Your network contains an Active Directory Domain Services (AD DS) forest named contoso.com. The forest contains a child domain named east.contoso.com. in the contoso.com domain, you create two users named Admin1 and Admin2. You need to ensure that the users can perform the following tasks:

- Admin1 can create and manage Active Directory sites.
- Admin2 can deploy domain controller to the easl.conloso.com domain. The solution must use the principle of least privilege.

To which group should you add each user? To answer, select the appropriate options in the answer area.

NOTE Each correct selection is worth one point.

Answer Area

Admin1: 

Contoso\Administrators  
Contoso\Domain Admins  
Contoso\Enterprise Admins  
East\Administrators  
East\Domain Admins

Admin2: 

Contoso\Administrators  
Contoso\Domain Admins  
Contoso\Enterprise Admins  
East\Administrators  
East\Domain Admins

- A. Mastered  
B. Not Mastered

Answer: A

Explanation:

Answer Area

Admin1: 

Contoso\Enterprise Admins

Admin2: 

East\Domain Admins

NEW QUESTION 28

DRAG DROP - (Topic 3)

You create an Azure virtual machine named Server1 that runs Windows Server. Server1 has the disk configuration shown in the following exhibit.

Disk Management

File Action View Help

Volume

Layout

Type

File System

Status

Capacity

Free Spa...

% Free

System Reserved

Simple

Basic

NTFS

Healthy (S...

500 MB

465 MB

93 %

Temporary Storag...

Simple

Basic

NTFS

Healthy (P...

8.00 GB

7.28 GB

91 %

Actions

Shut down Server1.

Start Server1.

Create and attach a new data disk.

Create a new simple volume.

Create a new spanned volume.

Initialize the disk.

Answer Area

>

<

&u2191

&u2193

- A. Mastered  
B. Not Mastered

Answer: A

Explanation:

Actions

Shut down Server1.

Start Server1.

Create and attach a new data disk.

Create a new simple volume.

Create a new spanned volume.

Initialize the disk.

Answer Area

Start Server1.

Create and attach a new data disk.

Shut down Server1.

NEW QUESTION 30

HOTSPOT - (Topic 3)

You have a Windows Server container host named Server1 and an Azure subscription. You deploy an Azure container registry named Registry1 to the subscription.

On Server1, you create a container image named image1. You need to store imager in Registry1.

Which command should you run on Server1 ? To answer, select the appropriate options in the answer area.

NOTE: Each correct selection is worth one point.

Answer Area

docker

azcopy

xcopy

git

export

import

pull

push

Registry1.azurecr.io /image1

- A. Mastered
- B. Not Mastered

Answer: A

Explanation:

Answer Area

docker

azcopy

xcopy

git

export

import

pull

push

Registry1.azurecr.io /image1

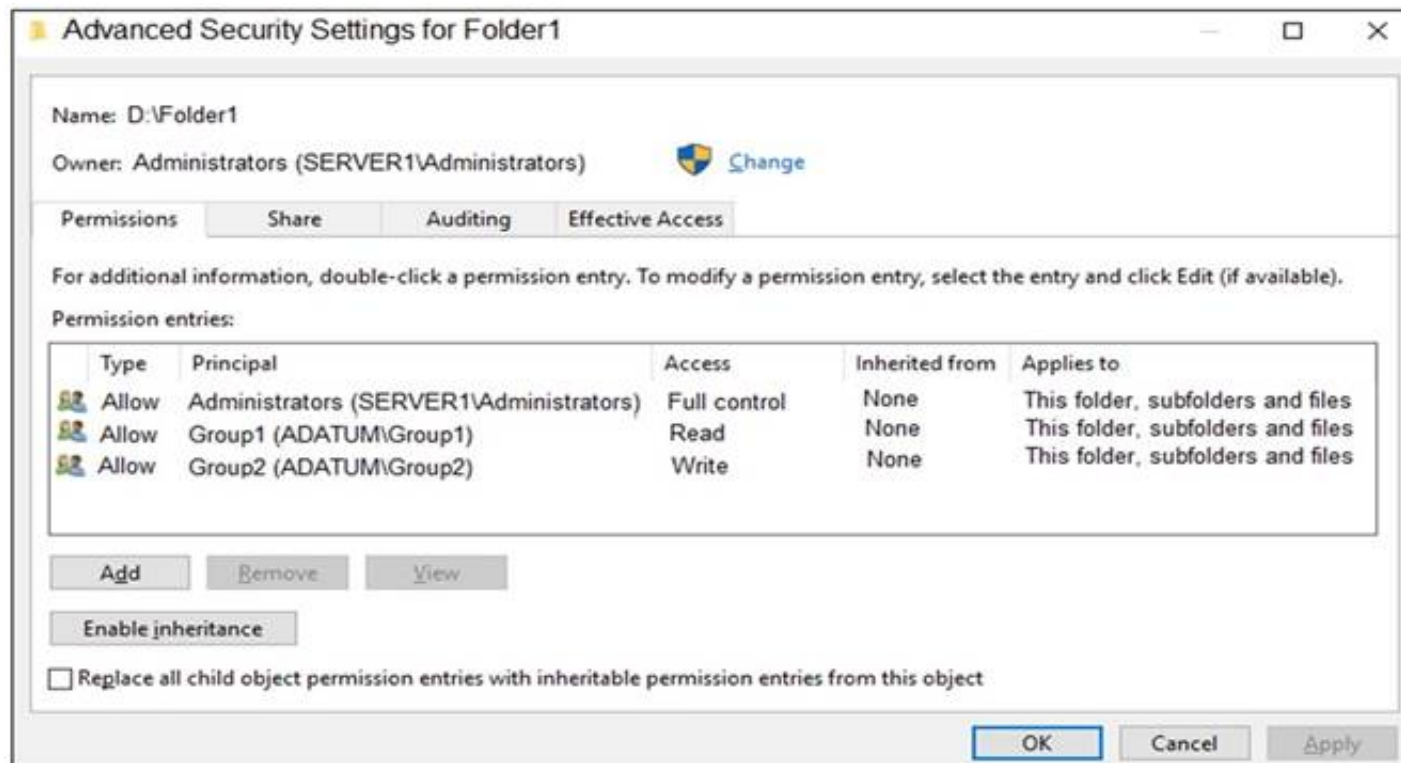
NEW QUESTION 35

HOTSPOT - (Topic 3)

Your network contains an Active Directory Domain Services (AD DS) domain named adatum.com. The domain contains a server named Server1 and the users shown in the following table.

Name	Member of
User1	Group1
User2	Group2
User3	Group3

Server1 contains a folder named D:\Folder1. The advanced security settings for Folder1 are configured as shown in the Permissions exhibit. (Click the Permissions tab.)



Folder1 is shared by using the following configurations:

```
Path           : D:\Folder1
Name           : Share1
ShareType      : FileSystemDirectory
FolderEnumerationMode : Unrestricted
```

The share permissions for Share1 are shown in the following table.

Group	Permission
Group1	Allow – Change
Group3	Allow – Full Control

For each of the following statements, select Yes if the statement is true. Otherwise, select No.

NOTE: Each correct selection is worth one point.

## Statements

Yes

No

User1 can read the files in Share1.

☐
☐

User3 can delete files in Share1.

☐
☐

If User2 connects to \\Server1.adatum.com from File Explorer, Share1 will be listed.

☐
☐

- A. Mastered
- B. Not Mastered

**Answer:** A

### Explanation:

To access files in a shared folder, you need to be granted permissions on the folder (NTFS permissions) AND permissions on the share. The most restrictive permission of the folder permissions and share permissions apply.

Box 1: Yes

Group1 has Read access to Folder1 and Change access to Share1. Therefore, User1 can read the files in Share1.

Box 2: No

Group3 has Full Control access to Share1. However, Group3 has no permissions configured Folder1. Therefore, User3 cannot access the files in Share1.

Box 3: Yes

Group2 has write permission to Folder1. However, Group2 has no permission on Share1. Therefore, users in Group2 cannot access files in the shared folder.

Access Based Enumeration when enabled hides files and folders that users do not have permission to access. However, Access Based Enumeration is not enabled on Share1.

This is indicated by the FolderEnumerationMode – Unrestricted setting. Therefore, the share will be visible to User2 even though User2 cannot access the shared folder.

### NEW QUESTION 37

HOTSPOT - (Topic 3)

Your network contains an Active Directory Domain Services (AD DS) domain named contoso.com. The domain contains a server named Server1 that has the DFS



Namespaces role service installed. Server1 hosts a domain-based Distributed File System (DFS) Namespace named Files. The domain contains a file server named Server2. Server2 contains a shared folder named Share1. Share1 contains a subfolder named Folder1. In the Files namespace, you create a folder named Folder1 that has a target of \\Server2.contoso.com\Share1\Folder1. You need to configure a logon script that will map drive letter M to Folder1. The solution must use the path of the DFS Namespace. How should you complete the command to map the drive letter? To answer, select the appropriate options in the answer area. NOTE: Each correct selection is worth one point.

Answer Area



- A. Mastered
- B. Not Mastered

Answer: A

Explanation:

Answer Area



### NEW QUESTION 41

- (Topic 3)  
Your network contains an Active Directory Domain Services (AD DS) domain named contoso.com. You need to identify which server is the PDC emulator for the domain. Solution: from Active Directory Users and Computers, you right-click contoso.com in the console tree, and then select Operations Master Does this meet the goal?

- A. Yes
- B. No

Answer: A

### NEW QUESTION 44

DRAG DROP - (Topic 3)  
You create a new Azure subscription. You plan to deploy Azure Active Directory Domain Services (Azure AD DS) and Azure virtual machines. The virtual machines will be joined to Azure AD DS. You need to deploy Active Directory Domain Services (AD DS) to ensure that the virtual machines can be deployed and joined to Azure AD DS. Which three actions should you perform in sequence? To answer, move the appropriate actions from the list of actions to the answer area and arrange them in the correct order.

Actions

Modify the settings of the Azure virtual network.

Install the Active Directory Domain Services role.

Install Azure AD Connect.

Create an Azure virtual network.

Create an Azure AD DS instance.

Run the Active Directory Domain Service installation Wizard.

Answer Area

>

<

- A. Mastered
- B. Not Mastered

Answer: A

Explanation:



Actions

Modify the settings of the Azure virtual network.

Install the Active Directory Domain Services role.

Install Azure AD Connect.

Create an Azure virtual network.

Create an Azure AD DS instance.

Run the Active Directory Domain Service installation Wizard.

Answer Area

Create an Azure virtual network.

Create an Azure AD DS instance.

>

Modify the settings of the Azure virtual network.

<

**NEW QUESTION 45**

- (Topic 3)  
 You have a server named Server1 that runs Windows Server.  
 You plan to host applications in Windows containers.  
 You need to configure Server1 to run containers. What should you install?

- A. Windows Admin Center
- B. the Windows Subsystem for Linux
- C. Docker
- D. Hyper-V

**Answer:** C

**NEW QUESTION 48**

- (Topic 3)  
 Your network contains an Active Directory Domain Services (AD DS) domain. The domain contains a user named User1 and the servers shown in the following table.

Name	Server role	DHCP scope
Server1	DHCP Server	Scope1, Scope2
Server2	DHCP Server	Scope3, Scope4

You need to ensure that User1 can manage only Scope1 and Scope3. What should you do?

- A. Add User1 to the DHCP Administrators group on Server1 and Server2.
- B. Implement IP Address Management (IPAM).
- C. Add User1 to the DHCP Administrators domain local group.
- D. Implement Windows Admin Center and add connections to Server1 and Server2.

**Answer:** B

**NEW QUESTION 50**

DRAG DROP - (Topic 3)  
 You deploy a single-domain Active Directory Domain Services (AD DS) forest named contoso.com.  
 You deploy a server to the domain and configure the server to run a service.  
 You need to ensure that the service can use a group managed service account (gMSA) to authenticate.  
 Which three PowerShell cmdlets should you run in sequence? To answer, move the appropriate cmdlets from the list of cmdlets to the answer area and arrange them in the correct order.

Cmdlets

Add-ADComputerServiceAccount

Set-KdsConfiguration

Add-ADGroupMember

Add-KdsRootKey

New-ADServiceAccount

Install-ADServiceAccount

Answer Area

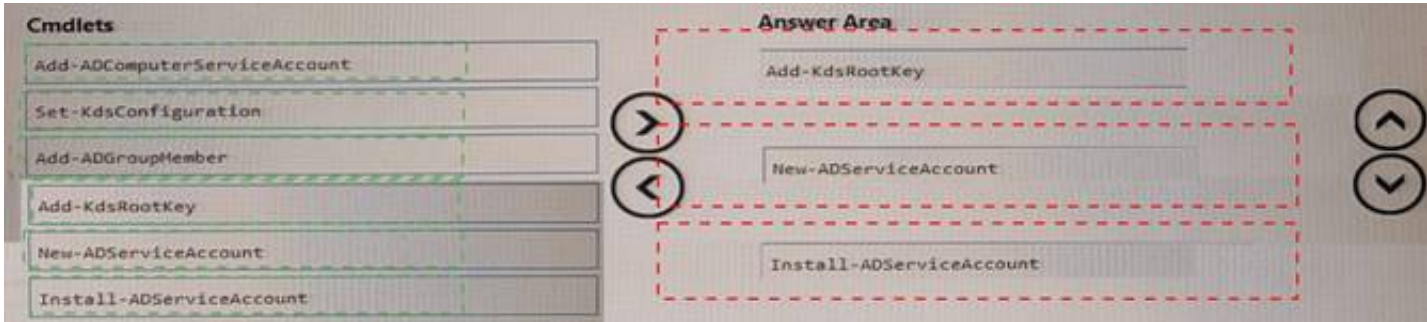
>

<

- A. Mastered
- B. Not Mastered

**Answer:** A

**Explanation:**



**NEW QUESTION 51**

HOTSPOT - (Topic 3)

You have an Active Directory Domain Services (AD DS) domain that contains the member servers shown in the following table.

Name	Operating system	Data Deduplication role service
Server1	Windows Server 2019	Installed
Server2	Windows Server 2022	Not installed
Server3	Windows Server 2022	Installed

Server3 contains a data disk named Disk1 that has Data Deduplication installed. Disk1 contains the files shown in the following table.

Name	Size
File1.txt	5 KB
File2.docx	800 KB
File3.sys	2 MB
File4.bmp	5 GB

Server3 fails.

You need to recover the files on Disk1.

Which files can you recover if you attach Disk1 to Server 1, and which files can you recover if you attach Disk1 to Server2? To answer, select the appropriate options in the answer area.

NOTE: Each correct selection is worth one point.

Answer Area

Server1:

File1.txt only

File1.txt only

File1.txt and File2.docx only

File1.txt and File3.sys only

File1.txt, File2.docx, File3.sys, and File4.bmp

No files can be recovered.

Server2:

File1.txt and File2.docx only

File1.txt only

File1.txt and File2.docx only

File1.txt and File3.sys only

File1.txt, File2.docx, File3.sys, and File4.bmp

No files can be recovered.

- A. Mastered
- B. Not Mastered

Answer: A

Explanation:

Answer Area

Server1:

File1.txt only

File1.txt only

File1.txt and File2.docx only

File1.txt and File3.sys only

File1.txt, File2.docx, File3.sys, and File4.bmp

No files can be recovered.

Server2:

File1.txt and File2.docx only

File1.txt only

File1.txt and File2.docx only

File1.txt and File3.sys only

File1.txt, File2.docx, File3.sys, and File4.bmp

No files can be recovered.

**NEW QUESTION 52**

HOTSPOT - (Topic 3)

You need to sync files from an on premises server named Server1 to Azure by using Azure File Sync.

You have a cloud tiering policy that is configured for 30 percent free space and 70 days. Volume E on Server1 is 500 GB.

A year ago, you configured E:\Data on Server1 to sync by using Azure File Sync. The files that are visible in E:\Data are shown in the following table.

Name	Size	Last accessed
File1	200 GB	2 days ago
File2	100 GB	10 days ago
File3	200 GB	60 days ago
File4	50 GB	100 days ago

Volume E does NOT contain any other files.

Where are File1 and File3 located? To answer, select the appropriate options in the answer area.

NOTE: Each correct selection is worth one point.

File1:

Server1 only
The Azure file share only
Server1 and the Azure file share

File3:

Server1 only
The Azure file share only
Server1 and the Azure file share

- A. Mastered
- B. Not Mastered

**Answer:** A

**Explanation:**

File1:

Server1 only
The Azure file share only
Server1 and the Azure file share

File3:

Server1 only
The Azure file share only
Server1 and the Azure file share

#### NEW QUESTION 56

- (Topic 3)

Your network contains an Active Directory Domain Services (AD DS) forest named contoso.com. The root domain contains the domain controllers shown in the following table.

Name	FSMO role
DC1	Domain naming master
DC2	RID master
DC3	PDC emulator
DC4	Schema master
DC5	Infrastructure master

A failure of which domain controller will prevent you from creating application partitions?

- A. DC1
- B. DC2



- C. DC3
- D. DC4
- E. DC5

**Answer:** A

**Explanation:**

Reference:

<https://docs.microsoft.com/en-us/troubleshoot/windows-server/identity/fsmo-roles>

**NEW QUESTION 57**

HOTSPOT - (Topic 3)

Your network contains a two-domain on-premises Active Directory Domain Services (AD DS) forest named Contoso.com. The forest contains the domain controllers shown in the following table.

Name	Description	Domain	Active Directory site
DC1	Forest-wide and domain-wide FSMO role holder	contoso.com	Hub
DC2	Domain-wide FSMO role holder	child.contoso.com	Site1
RODC3	Read-only domain controller (RODC)	contoso.com	Site2

You create an Active Directory site named Site3. Site1, Site2 and Site3 each has a dedicated site link to the Hub site.

In Site3, you install a new server named Server1.

You need to promote Server1 to an ROOC in child.contoso.com by using the install from Media (IFM) option. The solution must minimize network traffic.

What should you do? To answer select the appropriate options in the answer area. NOTE: Each correct selection is worth one point.

Answer Area

Server to use to create the IFM source:

Tool to use to create the IFM source:

- A. Mastered
- B. Not Mastered

**Answer:** A

**Explanation:**

Answer Area

Server to use to create the IFM source:

Tool to use to create the IFM source:

**NEW QUESTION 59**

- (Topic 3)

Your network contains an Active Directory Domain Services (AD DS) domain. The domain contains the offices shown in the following table.

Location	Number of VPN servers	Number of remote users
Boston	2	30
Dallas	2	50
Seattle	4	100

You need to deploy a Network Policy Server (NPS) named NPS1 to enforce network access policies for all remote connections.

What is the minimum number of RADIUS clients that you should add to NPS1?

- A. 1
- B. 3



- C. 8
- D. 180
- E. 188

Answer: C

NEW QUESTION 61

- (Topic 3)  
Your network contains an on-premises Active Directory Domain Services (AD DS) domain named contoso.com The domain contains three servers that run Windows Server and have the Hyper-V server role installed. Each server has a Switch Embedded Teaming (SET) team  
You need to verify that Remote Direct Memory Access (RDMA) and all the required Windows Server settings are configured properly on each server.  
What should you use?

- A. Server Manager
- B. the validate-DCB cmdtet
- C. the Get-NetAdaptor cmdlet
- D. Failover Cluster Manager

Answer: B

Explanation:

Reference: <https://github.com/Microsoft/Validate-DCB>

NEW QUESTION 62

- (Topic 3)  
You have five tile servers that run Windows Server.  
You need to block users from uploading video files that have the .mov extension to shared folders on the file servers. All other types of files must be allowed. The solution must minimize administrative effort.  
What should you create?

- A. a Dynamic Access Control central access policy
- B. a file screen
- C. a Dynamic Access Control central access rule
- D. a data loss prevention (DLP) policy

Answer: B

Explanation:

Reference:  
<https://docs.microsoft.com/en-us/windows-server/storage/fsrm/file-screening-management>

NEW QUESTION 63

DRAG DROP - (Topic 3)  
You have an on-premises server named Server 1 that runs Windows Server. Server 1 contains a file share named Share 1.  
You have an Azure subscription. You perform the following actions:

- Deploy Azure File Sync
- Install the Azure File Sync agent on Server1.
- Register Server1 with Azure File Sync

You need to ensure that you can add Share1 as an Azure File Sync server endpoint. Which three actions should you perform in sequence? To answer, move the appropriate actions from the list of actions to the answer area and arrange them in the correct order.

Actions

Deploy the Azure Connected Machine agent.

Deploy an Azure VPN gateway.

Create a private endpoint.

Create an Azure Storage account.

Create an Azure file share.

Create a sync group.

>

<

Answer Area

&u2191

&u2193

- A. Mastered
- B. Not Mastered

Answer: A

Explanation:

Actions

Deploy the Azure Connected Machine agent.

Deploy an Azure VPN gateway.

Create a private endpoint.

Create an Azure Storage account.

Create an Azure file share.

Create a sync group.

>

<

Answer Area

Create an Azure Storage account.

Create an Azure file share.

Create a sync group.

&u2191

&u2193

NEW QUESTION 64

- (Topic 3)

You have a server named Server1 that runs Windows Server. Server1 has the storage pools shown in the following table.

Name	Number of 7,200-RPM HDDs	Number of 10,000-RPM HDDs	Number of SSDs
Pool1	4	4	None
Pool2	None	2	2
Pool3	8	None	4

You plan to create a virtual disk named VDisk1 that will use storage tiers. Which pools can you use to create VDisk1?

- A. Pool2 and Pool3 only
- B. Pool 2only
- C. Pool only
- D. Pool, Pool2, and Pool3
- E. Pool1 and Pool2 only
- F. Pool1 and Pool3 only
- G. Pool3 only

**Answer:** A

**Explanation:**

Storage tiering requires both standard HDDs and SSDs. We cannot use Pool1 because it does not have any SSDs.

#### NEW QUESTION 67

- (Topic 3)

Your network contains an Active Directory Domain Services (AD DS) domain named contoso.com.

You need to identify which server is the PDC emulator for the domain. Solution: From a command prompt, you run netdom.exe query fsmo. Does this meet the goal?

- A. Yes
- B. No

**Answer:** A

**Explanation:**

Reference:

<https://activedirectorypro.com/how-to-check-fsmo-roles/>

#### NEW QUESTION 69

- (Topic 3)

Note: This question is part of a series of questions that present the same scenario. Each question in the series contains a unique solution that might meet the stated goals. Some question sets might have more than one correct solution, while others might not have a correct solution.

After you answer a question in this section, you will NOT be able to return to it. As a result, these questions will not appear in the review screen.

You are planning the deployment of DNS to a new network.

You have three internal DNS servers as shown in the following table.

Name	Location	IP address	Local DNS zone
Server1	Montreal	10.0.1.10	contoso.local
Server2	Toronto	10.0.2.10	east.contoso.local
Server3	Seattle	10.0.3.10	west.contoso.local

The contoso.local zone contains zone delegations for east.conloso.local and west.contoso.local. All the DNS servers use root hints.

You need to ensure that all the DNS servers can resolve the names of all the internal namespaces and internet hosts.

Solution: On Server2 and Server3, you configure a conditional forwarder for contoso.local. Does this meet the goal?

- A. Yes
- B. No

**Answer:** B

**Explanation:**

[https://docs.microsoft.com/en-us/previous-versions/windows/it-pro/windows-server-2008-r2-and-2008/cc794735\(v=ws.10\)](https://docs.microsoft.com/en-us/previous-versions/windows/it-pro/windows-server-2008-r2-and-2008/cc794735(v=ws.10))

#### NEW QUESTION 74

- (Topic 3)

You have an Azure subscription that contains the storage accounts shown in the following table.

Name	Location	File share	Blob container
storage1	West US	share1	None
storage2	West US	share2	container2
storage3	Central US	share3	None
storage4	Central US	share4	container4

In the West US Azure region, you create a storage sync service named SyncA. You plan to create a sync group named GroupA. What is the maximum number of cloud endpoints you can use with GroupA?

- A. 1
- B. 2
- C. 3
- D. 4

**Answer:** B

#### NEW QUESTION 78

- (Topic 3)

You have a server named Server1 that runs Windows Server and contains a file share named Share1.

You need to prevent users from stoning MP4 files in Share1. The solution must ensure that the users can store other types of files in the share.

What should you configure on Server1?

- A. File Management Tasks
- B. NTFS Quotas
- C. NTFS permissions
- D. file screens

**Answer:** D

#### NEW QUESTION 82

- (Topic 3)

You have an on-premises Active Directory Domain Services (AD DS) domain that syncs with an Azure Active Directory (Azure AD) tenant. You plan deploy 100 new Azure virtual machines that will run Windows Server. You need to ensure that each new virtual machine is joined to the AD DS domain. What should you use?

- A. Azure AD Connect
- B. a Group Policy Object (GPO)
- C. an Azure Resource Manager (ARM) template
- D. an Azure management group

**Answer:** C

#### Explanation:

Reference:

<https://www.ludovicmedard.com/create-an-arm-template-of-a-virtual-machine-automatically-joined-to-a-domain/>

#### NEW QUESTION 87

- (Topic 3)

You have an on-premises Active Directory Domain Services (AD DS) domain that syncs with an Azure Active Directory (Azure AD) tenant. The on-premises network is connected to Azure by using a Site-to-Site VPN. You have the DNS zones shown in the following table.

Name	Location	Description
contoso.com	A domain controller named DC1 on the on-premises network	Provides name resolution on-premises
fabrikam.com	An Azure private DNS zone	Provides name resolution for all Azure virtual networks

You need to ensure that names from aDiifcam.com can be resolved from the on-premises network. Which two actions should you perform? Each correct answer presents part of the solution. NOTE: Each correct selection is worth one point.

- A. Create a conditional forwarder for fabrikam.com on DC1.
- B. Create a stub zone for fabrikam.com on DC1.
- C. Create a secondary zone for fabrikam.com on DC1.
- D. Deploy an Azure virtual machine that runs Windows Server.
- E. Modify the DNS Servers settings for the virtual network.
- F. Deploy an Azure virtual machine that runs Windows Server.
- G. Configure the virtual machine as a DNS forwarder.

**Answer:** AE

#### Explanation:

Reference:

<https://docs.microsoft.com/en-us/azure/private-link/private-endpoint-dns#on-premises-workloads-using-a-dns-forwarder>

#### NEW QUESTION 88

- (Topic 3)

Your network contains an Active Directory Domain Services (AD DS) forest. The forest contains three Active Directory sites named Site1, Site2, and Site3. Each

site contains two domain controllers. The sites are connected by using DEFAULTIPSITELINK.  
You open a new branch office that contains only client computers.  
You need to ensure that the client computers in the new office are primarily authenticated by the domain controllers in Site1.  
Solution: You configure the Try Next Closest Site Group Policy Object (GPO) setting in a GPO that is linked to Site1.  
Does this meet the goal?

- A. Yes
- B. No

**Answer:** B

#### NEW QUESTION 91

- (Topic 3)

You have an Active Directory Domain Services (AD DS) domain. The domain contains a member server named Server1 that runs Windows Server.  
You need to ensure that you can manage password policies for the domain from Serve1. Which command should you run first on Server1?

- A. Install-Windows Feature RSAT-AO-PowerShell
- B. Install-Windows Feature 6PHC
- C. Install-Windows Feature RSAT-AD-Tool\$
- D. Install-windows Feature RSAT-AWIMS

**Answer:** C

#### NEW QUESTION 94

- (Topic 3)

You have a server named Server1 that runs Windows Server and contains two drives named C and D. Server1 hosts multiple file shares.  
You enable Data Deduplication on drive D and select the General purpose file server workload.  
You need to minimize the space consumed by files that were recently modified or deleted. What should you do?

- A. Run the set-dedupvolume cmdlet and configure the scrubbing job.
- B. Run the Set-DedupSchedule Cmdlet and configure a GarbageCollection job.
- C. Run the set-Dedupvoiume cmdlet and configure the InputOutputScale settings.
- D. Run the Set-DedupSchedule cmdlet and configure the optimization job.

**Answer:** B

#### NEW QUESTION 95

HOTSPOT - (Topic 3)

You have an on-premises server named Server1 that runs Windows Server and has internet connectivity.  
You have an Azure subscription.  
You need to monitor Server1 by using Azure Monitor.  
Which resources should you create in the subscription, and what should you install on Server1? To answer, select the appropriate options in the answer area.  
NOTE: Each correct selection is worth one point.

In the subscription, create:

An Azure Files storage account
A Log Analytics workspace
An Azure SQL database and a data collection rule
An Azure Blob Storage account and a data collection rule

On Server1, install:

The Azure Monitor agent
The Analytics gateway
The Device Health Attestation server role

- A. Mastered
- B. Not Mastered

**Answer:** A

**Explanation:**



### NEW QUESTION 97

HOTSPOT - (Topic 3)

Your network contains two Active Directory Domain Services (AD DS) forests named contoso.com and fabrikam.com. A two-way forest trust exists between the forests. Each forest contains a single domain. The domains contain the servers shown in the following table.

Name	Domain	Description
Server1	contoso.com	Hosts a Windows Admin Center gateway
Server2	fabrikam.com	Hosts resources that will be managed remotely by using Windows Admin Center on Server1

You need to configure resources based constrained delegation so that the users in contoso.com can use Windows Admin Center on Server1 to connect to Server2. How should you complete the command? To answer, select the appropriate options in the answer area.

NOTE: Each correct selection is worth one point.

Answer Area

Set-ADComputer -Identity

(Get-ADComputer server1.contoso.com)

(Get-ADComputer server2.fabrikam.com)

(Get-ADGroup 'Contoso\Domain Users')

(Get-ADGroup 'Fabrikam\Domain Users')

-PrincipalsAllowedToDelegateToAccount

(Get-ADComputer server1.contoso.com)

(Get-ADComputer server2.fabrikam.com)

(Get-ADGroup 'Contoso\Domain Users')

(Get-ADGroup 'Fabrikam\Domain Users')

- A. Mastered  
B. Not Mastered

Answer: A

Explanation:

Answer Area

Set-ADComputer -Identity

(Get-ADComputer server1.contoso.com)

(Get-ADComputer server2.fabrikam.com)

(Get-ADGroup 'Contoso\Domain Users')

(Get-ADGroup 'Fabrikam\Domain Users')

-PrincipalsAllowedToDelegateToAccount

(Get-ADComputer server1.contoso.com)

(Get-ADComputer server2.fabrikam.com)

(Get-ADGroup 'Contoso\Domain Users')

(Get-ADGroup 'Fabrikam\Domain Users')

### NEW QUESTION 99

- (Topic 3)

You have servers that have the DNS Server role installed. The servers are configured as shown in the following table.

Name	Office	Local DNS zone	IP address
Server1	Paris	contoso.com	10.1.1.1
Server2	New York	None	10.2.2.2

All the client computers in the New York office use Server2 as the DNS server. You need to configure name resolution in the New York office to meet the following requirements:

- ? Ensure that the client computers in New York can resolve names from contoso.com.
- ? Ensure that Server2 forwards all DNS queries for internet hosts to 131.107.100.200.

The solution must NOT require modifications to Server1. Each correct answer presents part of the solution. NOTE: Each correct selection is worth one point.

- A. a forwarder  
B. a conditional forwarder  
C. a delegation

- D. a secondary zone
- E. a reverse lookup zone

**Answer:** AB

**Explanation:**

A conditional forwarder is required for contoso.com. A forwarder is required for all other domains.  
When you have a conditional forwarder and a forwarder configured, the conditional forwarder will be used for the specified domain.  
You could use a secondary zone for contoso.com but that would require a configuration change on Server1.

**NEW QUESTION 104**

- (Topic 2)

You need to implement a name resolution solution that meets the networking requirements. Which two actions should you perform? Each correct answer presents part of the solution.

NOTE: Each correct selection is worth one point

- A. Create an Azure private DNS zone named corp.fabhkam.com.
- B. Create a virtual network link in the coip.fabnkam.c om Azure private DNS zone.
- C. Create an Azure DNS zone named corp.fabrikam.com.
- D. Configure the DNS Servers settings for Vnet1.
- E. Enable autoregistration in the corp.fabnkam.com Azure private DNS zone.
- F. On DC3, install the DNS Server role.
- G. Configure a conditional forwarder on DC3.

**Answer:** DF

**Explanation:**

Virtual machines in an Azure virtual network receive their DNS configuration from the DNS settings configured on the virtual network. You need to configure the Azure virtual network to use DC3 as the DNS server. Then all virtual machines in the virtual network will use DC3 and their DNS server.

**NEW QUESTION 105**

DRAG DROP - (Topic 2)

You need to meet the security requirements for passwords.

Where should you configure the components for Azure AD Password Protection? lo answer, drag the appropriate components to the correct locations. Each component may be used once, more than once, or not at all. You may need to drag the split bar between panes or scroll to view content.

NOTE Each correct selection is worth one point.

- A. Mastered
- B. Not Mastered

**Answer:** A

**Explanation:**

**NEW QUESTION 110**

- (Topic 1)

You need to meet the technical requirements for VM2. What should you do?

- A. Implement shielded virtual machines.
- B. Enable the Guest services integration service.
- C. Implement Credential Guard.
- D. Enable enhanced session mode.

**Answer:** D

**NEW QUESTION 113**

HOTSPOT - (Topic 1)

For each of the following statements, select Yes if the statement is true. Otherwise, select No.

NOTE: Each correct selection is worth one point.

Answer Area

Statements

Admin1 must use a password that has at least 14 characters.

User1 must use a password that has at least 10 characters.

If Admin1 creates a new local user on Server1, the password for the new user must be at least eight characters.

Yes

No

☐

☐

☐

☐

- A. Mastered  
B. Not Mastered

Answer: A

Explanation:

Answer Area

Statements

Admin1 must use a password that has at least 14 characters.

User1 must use a password that has at least 10 characters.

If Admin1 creates a new local user on Server1, the password for the new user must be at least eight characters.

Yes

No

☐

☒

☒

☐

NEW QUESTION 118

.....

## Relate Links

**100% Pass Your AZ-800 Exam with ExamBible Prep Materials**

<https://www.exambible.com/AZ-800-exam/>

## Contact us

We are proud of our high-quality customer service, which serves you around the clock 24/7.

Viste - <https://www.exambible.com/>