

# UiPath

## Exam Questions UiPath-ADAv1

UiPath Automation Developer Associate v1 Exam



### NEW QUESTION 1

Consider testing a workflow that computes the sum of two numbers having the data driven test data from the Excel file below:

Number1	Number2	Sum
1	2	3
2	2	4
5	4	9

Expanding the functionality of the workflow to compute the sum of three numbers, the data needs to be updated as well to accommodate the new scenario:

Number1	Number2	Number3	Sum
1	2	2	5
2	2	3	7
5	4	1	10

What are steps to do that?

- A. Click Right on the Test Case and select Update Test Data.
- B. Click Right on the Test Case and select Add Test Data.
- C. Click Right on the Test Case and select Remove Test Data.
- D. Click Right on the Test Case and select Refresh Test Data.

**Answer: A**

#### Explanation:

To update the data to accommodate the new scenario, you need to modify the Excel file that contains the test data and then refresh the test case to reflect the changes. The steps are as follows:

? Open the Excel file that has the test data for the workflow. It should have four columns: Number1, Number2, Sum, and Result.

? Add a new column after Number2 and name it Number3. This column will store the third number for the sum operation.

? Update the existing rows in the Excel file to include a value for Number3 and adjust the value of Sum accordingly. For example, if Number1 is 1, Number2 is 2, and Number3 is 3, then Sum should be 6.

? Save and close the Excel file.

? In UiPath Studio, right click on the test case that uses the Excel file as the test data source and select Update Test Data. This will open a window where you can edit the test data settings.

? In the Update Test Data window, make sure that the Excel file path is correct and that the sheet name is selected. You can also change the name and description of the test data if you want.

? Click OK to save the changes and close the window.

? Right click on the test case again and select Refresh Test Data. This will reload the test data from the Excel file and update the test case accordingly.

You have successfully updated the test data to compute the sum of three numbers instead of two. You can now run or debug your test case with data variations1.

### NEW QUESTION 2

A developer wants to design a complex business process using UiPath Studio. The workflow type needs to present multiple branches between UI activities Which recommended type of workflow meets the requirement?

- A. Global Exception Handler
- B. Flowchart
- C. Sequence
- D. State Machine

**Answer: B**

#### Explanation:

The recommended type of workflow for designing a complex business process using UiPath Studio is Flowchart. Flowcharts are suitable for a more complex business logic, as they enable you to integrate decisions and connect activities in a more diverse manner, through multiple branching logic operators. Flowcharts can also be used as a part of other diagrams, such as Sequences or State Machines3. Flowcharts provide a clear and visual representation of the flow of the process, as well as the possible outcomes and exceptions. Flowcharts can also be easily modified and expanded, as new activities and branches can be added or removed4. References: Flowchart and Understanding the Concept of Workflow of UiPath from UiPath documentation and Medium.

### NEW QUESTION 3

#### DRAG DROP

A developer wants to invoke a workflow in Main xaml called ProcessPurchaseOrders.xaml. Data needs to be passed to and from the invoked workflow What is the correct sequence of steps the developer needs to perform?

Instructions: Drag the Description found on the left and drop on the correct Step found on the right

Description	Step Sequence
Open the ProcessPurchaseOrders.xaml file and create the arguments	Step 1
Pass the values of the arguments to/from the variables in the Main.xaml file	Step 2
Create the ProcessPurchaseOrders.xaml file	Step 3
Invoke the ProcessPurchaseOrders.xaml file in the Main.xaml file and click Import Arguments	Step 4

- A. Mastered  
 B. Not Mastered

**Answer: A**

**Explanation:**

The correct sequence of steps the developer needs to perform is:

- ? Step 1 = Create the ProcessPurchaseOrders.xaml file
- ? Step 2 = Open the ProcessPurchaseOrders.xaml file and create the arguments
- ? Step 3 = Invoke the ProcessPurchaseOrders.xaml file in the Main.xaml file and click Import Arguments
- ? Step 4 = Pass the values of the arguments to/from the variables in the Main.xaml file

This sequence will ensure that the developer can create a reusable workflow, invoke it from the main workflow, and pass data between them using arguments.

<https://forum.uipath.com/t/import-arguments-in-invoke-workflow-file/1923>

<https://forum.uipath.com/t/pass-arguments-invoke/132595>

**NEW QUESTION 4**

Data from an Excel file is read into a data table named "dtEmployee", as displayed in the following graphic:

	A	B	C	D
1	<b>Name</b>	<b>Date Of Joining</b>	<b>Department</b>	<b>Salary</b>
2	Andrew	12/11/2016	IT	30000
3	Billy	11/11/2015	IT	20000
4	Clara	6/6/2013	Marketing	15000
5	Dennis	8/12/2017	ITES	35000
6	Esther	2/11/2017	Finance	42000
7	Fatima	6/6/2013	ITES	30000
8	Gilly	8/6/2013	Finance	15000
9	Hannah	2/11/2017	Finance	28000
10				
11				
12				

A developer needs to filter the data table to obtain all rows representing employees from the Finance and IT departments with a Salary under 30,000. Which expression yields the desired outcomes?

- A. dtEmployee.Select("([Department]='IT' AND [Department]='Finance') AND [Salary] < 30000")
- B. dtEmployee.Select("([Department]='IT' OR [Department]='Finance' AND [Salary] < 30000")
- C. dtEmployee.Select("([Department]='IT' OR [Department]='Finance') AND [Salary] < 30000")
- D. dtEmployee.Select("([Department]='IT' OR [Department]='Finance' OR [Salary] < 30000")

**Answer: C**

**Explanation:**

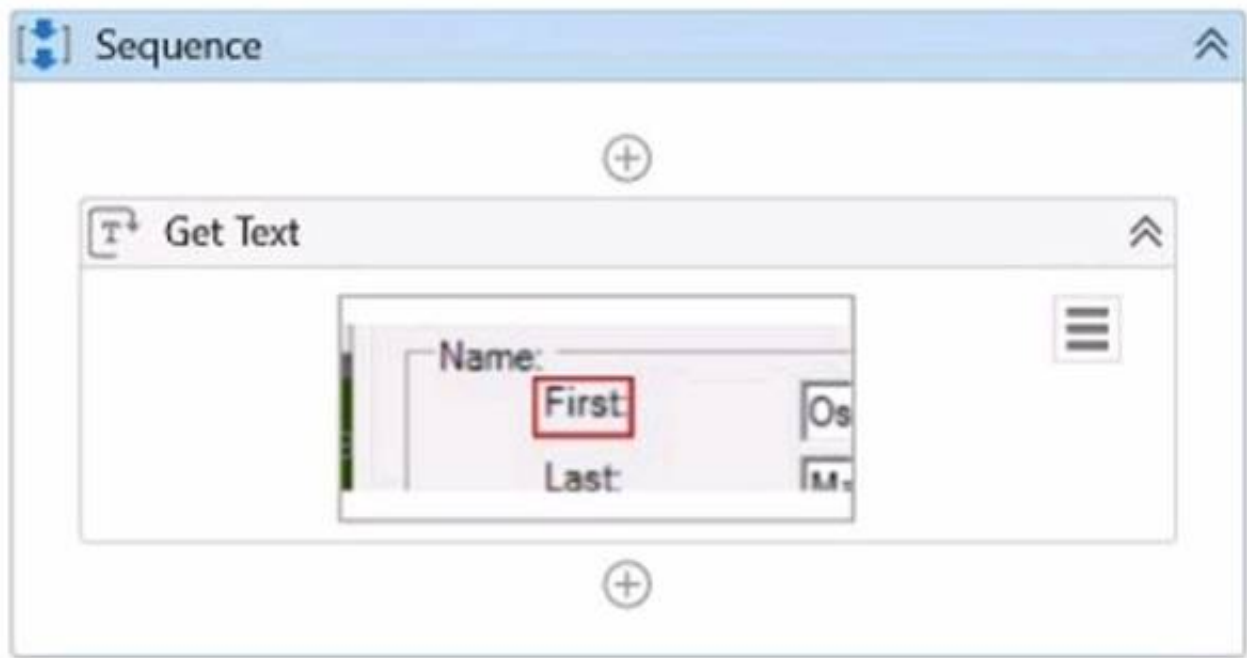
This expression filters the data table to obtain all rows representing employees from the Finance and IT departments with a Salary under 30,000. The expression uses the Select method of the data table, which returns an array of data rows that match a specified condition. The condition is written as a string that follows the syntax and rules of the DataColumn.Expression property. The condition uses parentheses to group the logical operators OR and AND, which have different precedence levels. The OR operator returns true if either operand is true, while the AND operator returns true only if both operands are true. The condition also uses single quotes to enclose the string values of the Department column, and the less than operator to compare the numeric values of the Salary column. (UiPath Studio documentation1) References:

- ? 1: DataTable.Select Method (System.Data) | Microsoft Docs.

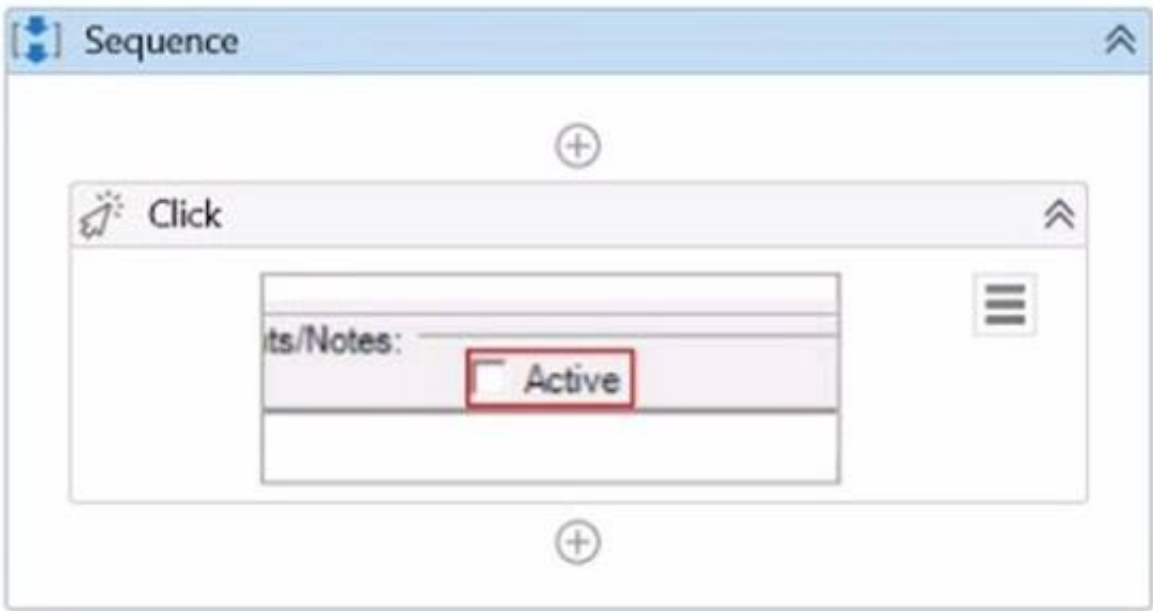
**NEW QUESTION 5**

What represents a sequence that contains an activity with a partial selector?

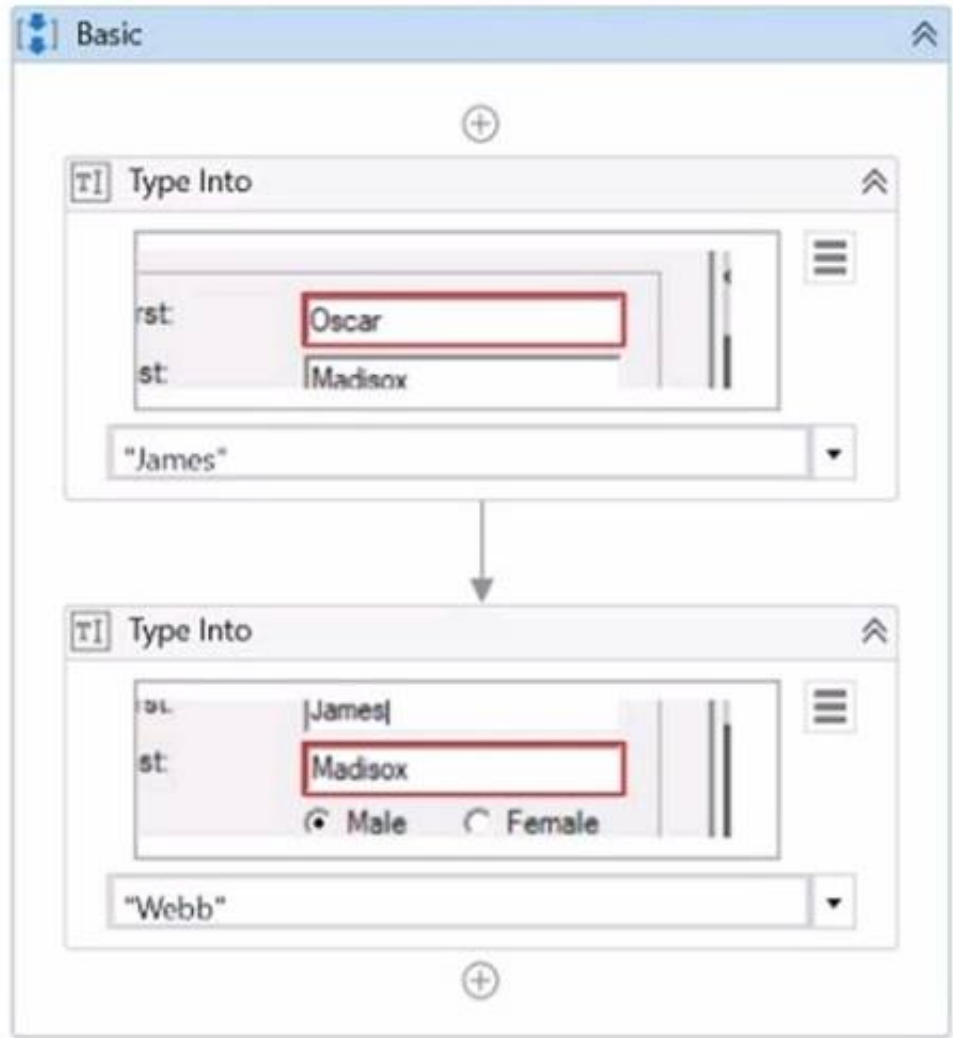
- A)



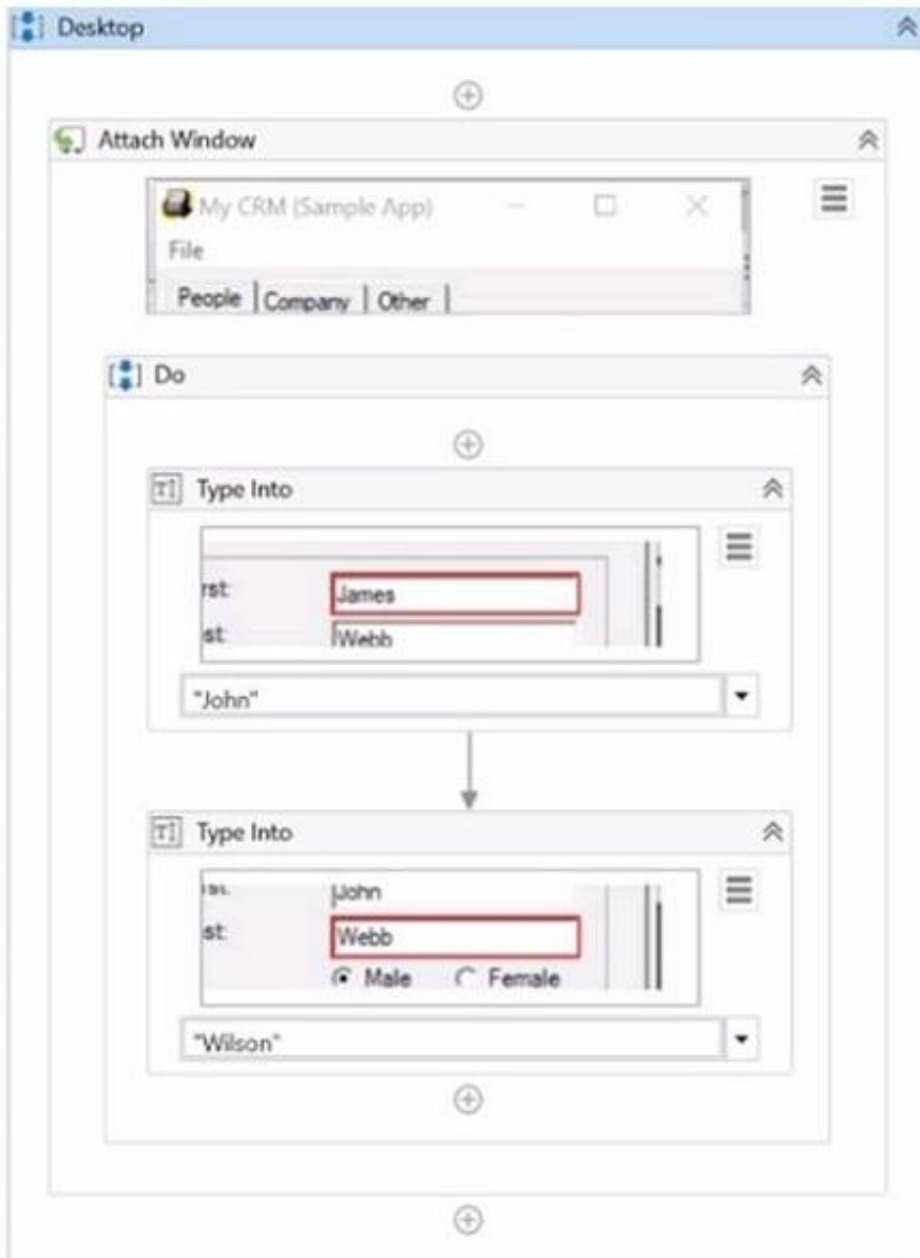
B)



C)



D)



- A. Option A
- B. Option B
- C. Option C
- D. Option D

**Answer: B**

**Explanation:**

A partial selector is a selector that does not contain the information about the top-level window. A partial selector is usually generated when a UI Automation activity is included in a container activity, such as Attach Browser or Attach Window, that has a full selector of the outer window. This way, the UI Automation activity can use the partial selector relative to the container, instead of the full selector from the root. A partial selector is indicated by the icon in the Properties panel of the UI Automation activity. In this question, the sequence that contains an activity with a partial selector is Option B, where the Click activity has the partial selector icon and is enclosed in an Attach Window activity. The other options have activities with full selectors, indicated by the icon . Therefore, the answer is B. Option B.

References: Full Versus Partial Selectors, Selectors

**NEW QUESTION 6**

Which of the following workflow names is correct, based on best practices?

- A. Transactionstatus
- B. Workflow1
- C. creation\_of\_file
- D. ScrapeFilteredStocks

**Answer: D**

**Explanation:**

The correct workflow name, based on best practices, is ScrapeFilteredStocks. This is because it follows the Pascal Case convention, which means that the first letter of each word is capitalized and there are no spaces or underscores between the words. This convention makes the workflow name easy to read and understand, as well as consistent with the UiPath standards. The other workflow names are incorrect because they either use lower case, snake case, or have no meaningful description. For example, Transactionstatus should be TransactionStatus, Workflow1 should be more descriptive, and creation\_of\_file should be CreationOfFile.

References:

- ? Naming Rules and Best Practices - Studio - UiPath Community Forum
- ? Workflow Design - UiPath Studio

**NEW QUESTION 7**

Which of the following is an outcome of converting a personal workspace into a folder in UiPath Orchestrator?

- A. The owner of the initial workspace is added by default to the newly created folder and assigned the Folder Administrator role.
- B. The owner of the initial workspace and the admin user are added by default to the newly created folder and assigned the Personal Workspace Administrator



- role.
- C. The admin user is added by default to the newly created folder with the User Administrator role.
- D. The owner of the initial workspace loses access to the newly created folder and the existing admin users are added by default.

**Answer: A**

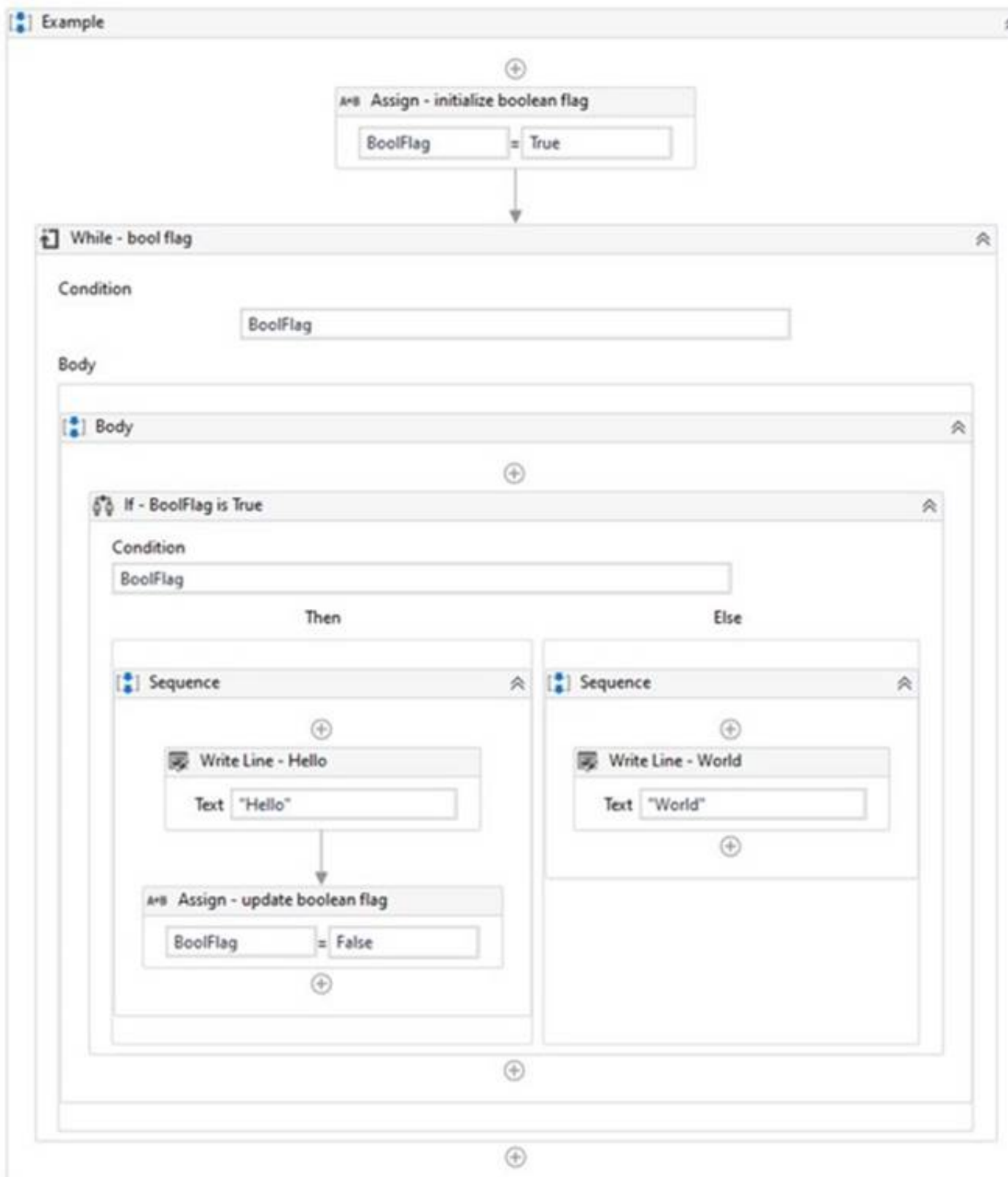
**Explanation:**

A personal workspace in UiPath Orchestrator is a type of modern folder that allows a user to work on their own automation projects without affecting other users or folders<sup>1</sup>. A personal workspace can be converted into a regular folder by using the Convert to Folder option in the folder settings<sup>2</sup>. When this happens, the owner of the initial workspace is added by default to the newly created folder and assigned the Folder Administrator role<sup>2</sup>. This role gives the user full control over the folder and its entities, such as processes, queues, assets, etc<sup>3</sup>. The other options are incorrect because they do not reflect the actual outcome of converting a personal workspace into a folder.

References: Personal Workspaces documentation, Use of UiPath Orchestrator Folder Packages and Workspaces, Folder Roles documentation.

**NEW QUESTION 8**

A developer has created the following workflow:



Based on the exhibit, which output is produced in the Output panel?

- A. World Hello
- B. World
- C. Hello World
- D. Hello

**Answer: C**

**Explanation:**

The output panel will display “Hello World” because the workflow is designed to first display “Hello” and then “World” in the output panel. The workflow starts with an Assign activity that initializes the Boolean flag to True. Then, the While activity checks if the flag is True. If it is, the workflow enters the Body section of the While activity. Inside the Body section, the workflow checks if the flag is True. If it is, the workflow enters the Then section of the If activity and displays “Hello” in the output panel. Then, the Assign activity sets the flag to False. Since the flag is now False, the workflow enters the Else section of the If activity and displays “World” in the output panel. Finally, the workflow exits the While activity since the flag is now False.

References:

? [Assign Activity - UiPath Activities]

? [While Activity - UiPath Activities]

? [If Activity - UiPath Activities]

? [Write Line Activity - UiPath Activities]

### NEW QUESTION 9

What will be the outcome when executing a Try Catch activity with a sequence placed within the Try section and no Catches section present?

- A. In case of an exception, a System Exception will be caught by default.
- B. Due to a validation error, the workflow will not execute.
- C. Process execution will terminate only if the sequence throws an exception.
- D. The sequence will result in a runtime error.

**Answer: B**

#### Explanation:

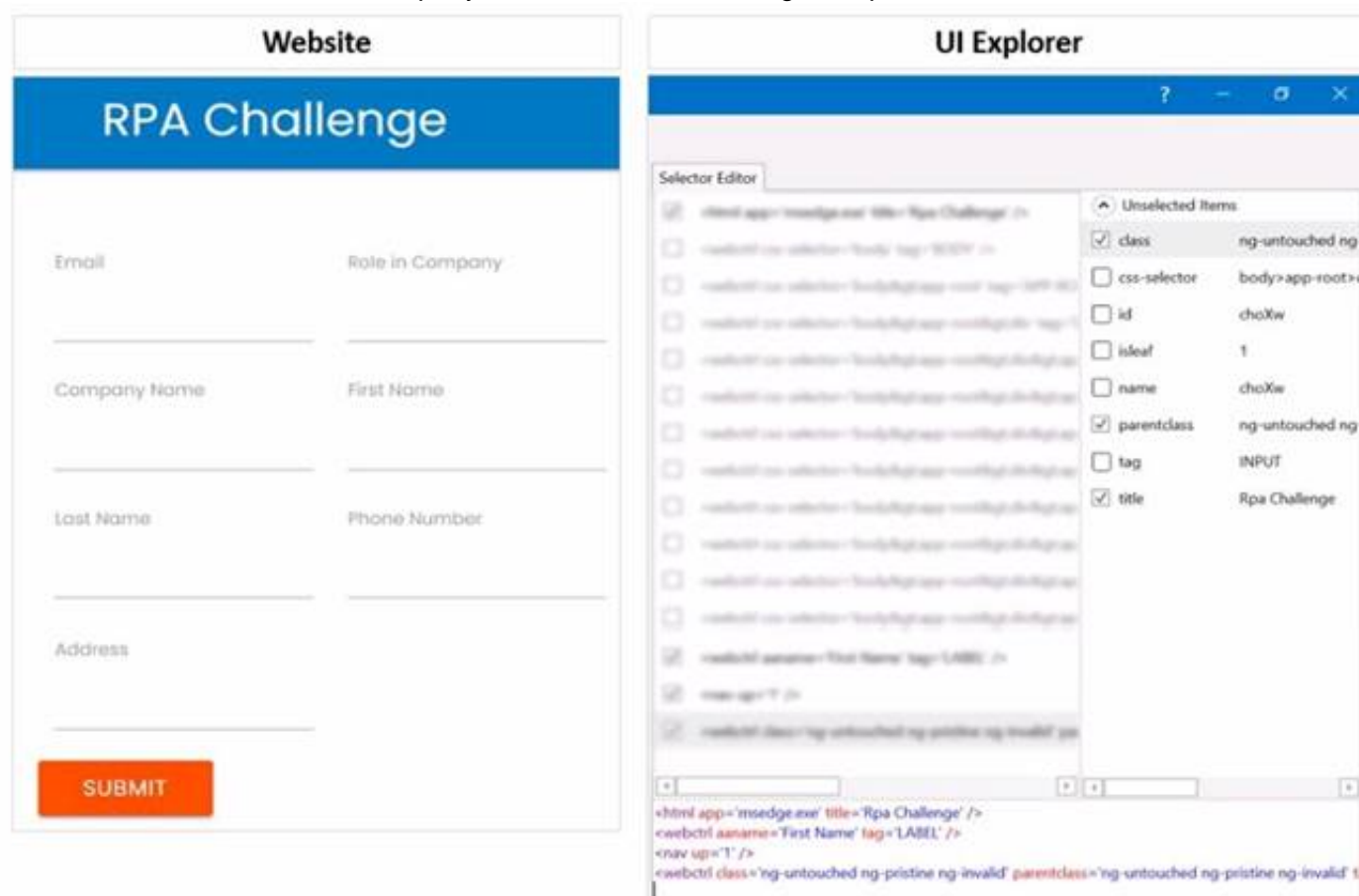
According to the UiPath documentation, the Try Catch activity requires at least one catch to be added<sup>1</sup>. If there is no catch defined for the Try Catch activity, the workflow will not pass the validation and will not execute. The validation error message will say: "Try Catch: At least one catch must be added to the Try Catch activity." Therefore, the outcome of executing a Try Catch activity with a sequence placed within the Try section and no Catches section present will be a validation error. References: Activities - Try Catch

### NEW QUESTION 10

#### HOTSPOT

A developer is using a Type into activity to enter details into a web form The developer notices that the selector for the text field is unreliable. The selector that is shown in the exhibit currently targets both a text label and a text field at runtime Only one additional Property needs to be clicked to ensure the selector targets only the First Name text field at runtime.

Instructions: Click the additional Property checkbox in the following UI Explorer "Unselected Items" column that should be used for the First Name text field.



- A. Mastered
- B. Not Mastered

**Answer: A**

#### Explanation:

To ensure the selector targets only the First Name text field at runtime, you need to click the additional Property checkbox for ID in the UI Explorer Unselected Items column. This will add the ID attribute to the selector, which is a unique identifier for the text field element. The ID attribute has the value "firstname" for the First Name text field, as shown in the image. This will make the selector more reliable and specific, and avoid targeting the text label or other elements with the same class or tag.

<https://docs.uipath.com/de/studio/standalone/2021.10/user-guide/uipath-explorer>

### NEW QUESTION 10

Review the following graphics:

Try Catch

Try

Do

Use Application: Untitled - Notepad

Application path \*

"C:\Windows\System32\notepad.exe"

Application arguments

Text must be quoted

☐ Match exact title: Untitled - Notepad

Type Into 'editable text'

Type this

Standard ☒ Secure ☐

"Typing into Notepad"

Empty field before typing

Single line [End, Shift+H]

Click before typing

Single

Log Message

Message \*

{ } "Try"

Log Level

Info



SelectorNotFoundException

exception

Log Message

Message \*

{} "SelectorNotFoundException"

Log Level

Error

ApplicationNotFoundException

exception

Log Message

Message \*

{} "ApplicationNotFoundException"

Log Level

Error

Add new catch

Finally

Drop activity here

Continue on error

Continue executing the activ

DisplayName

Use Application: Untitled - Notepad

Timeout

11

Input

Unified Application Target

TargetApp

Input/Output Element

Input element

The Input UI Element defines the

Output element

Output a UI Element to use in ot

Misc

Private

☐

Options

Close

NAppCloseMode.Always

Input mode

Hardware Events

Open

NAppOpenMode.Never

Resize window

None

Window attach mode

Application instance

Options - Browser

Incognito/private window

Opens the new browser sessi

User data folder mode

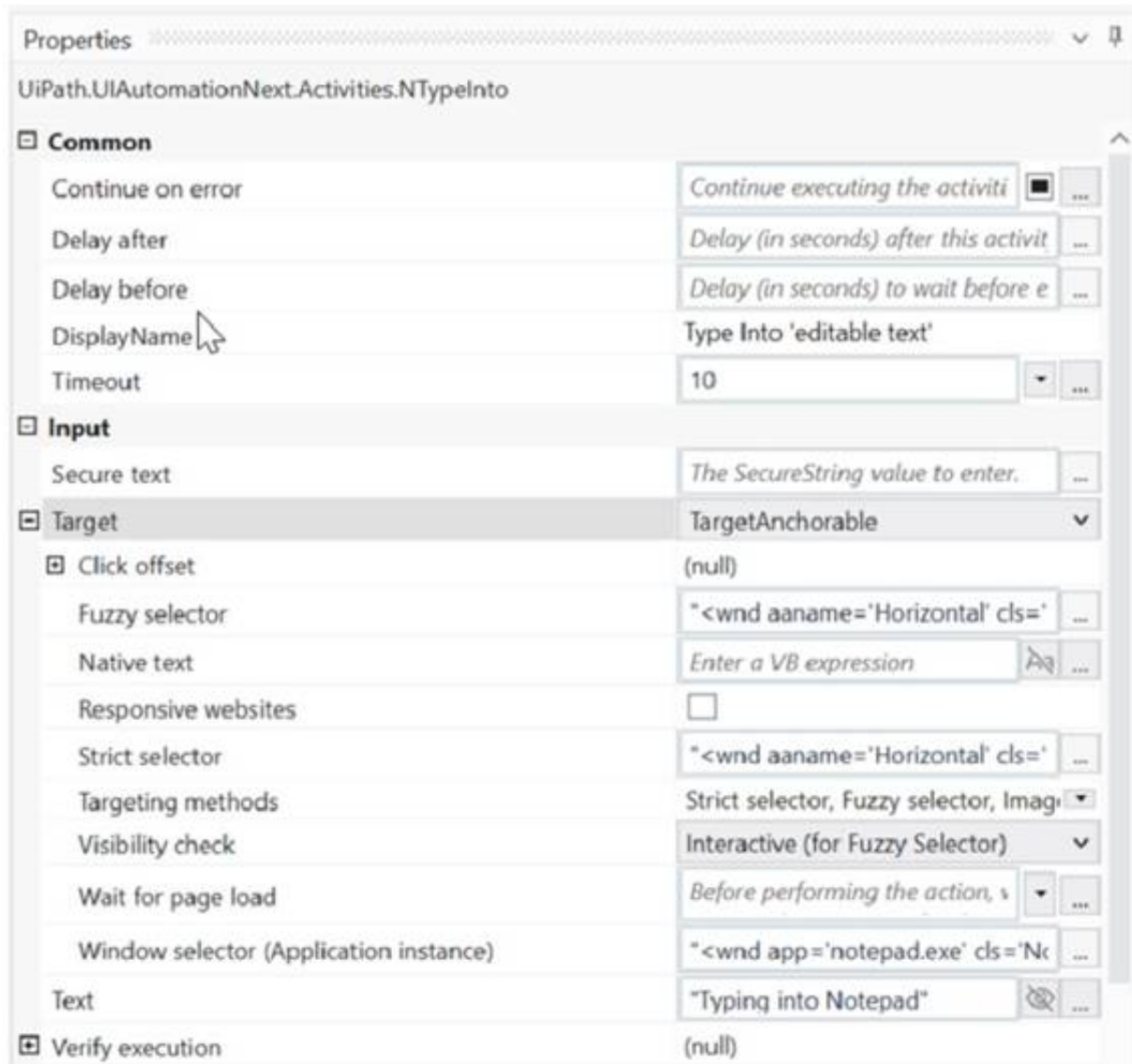
The user data folder mode y

User data folder path

The user data folder that the brc

WebDriver mode

Indicates how WebDriver is i



If the automation is executed and Notepad.exe is not running, which Log Message text value is contained in the Output panel?

- A. Exception
- B. ApplicationNotFoundException
- C. Try
- D. SelectorNotFoundException

**Answer: D**

**Explanation:**

Based on the image you sent, the automation process consists of four steps: opening Notepad.exe, typing some text, saving the file, and closing Notepad.exe. Each step has a Log Message activity that writes a text value to the Output panel. If Notepad.exe is not running, the first step will fail and throw an exception. The exception type is SelectorNotFoundException, because the Open Application activity cannot find the selector for Notepad.exe1. Therefore, the Log Message text value that is contained in the Output panel is "SelectorNotFoundException", which is option D. References: Open Application documentation.

**NEW QUESTION 13**

A developer is using the Step Out action in Debug mode to review a process as shown in the following exhibit.



Which functionality does the Step Out action provide?

- A. Pauses at an activity that caused an error
- B. Re-executes the activity which threw an exception
- C. Executes only one activity at a time and then pauses
- D. Executes activities in the current container and then pauses

**Answer: D**

**Explanation:**

The Step Out action is used for stepping out and pausing the execution at the level of the current container. Step Out completes the execution of activities in the current container, before pausing the debugging. This option works well with nested sequences1. In the exhibit, the Step Out action will execute all the activities inside the Sequence container and then pause at the next activity in the Main workflow. References: Debugging Actions from UiPath documentation.

**NEW QUESTION 18**

What is the purpose of the Interval filter in the Orchestrator's Monitoring page?

- A. It allows you to control the granularity of the displayed data and check the health of your system in either the last day or the last hour.
- B. It allows you to allocate licenses per machine for the displayed data.
- C. It allows you to choose between background and foreground processes for the displayed data.
- D. It enables you to sort the displayed data based on job priorities.

**Answer: A**

**Explanation:**

The Interval filter in the Orchestrator's Monitoring page lets you select the time range for the data that is displayed on the dashboard<sup>1</sup>. You can choose between Last Day and Last Hour options to view the performance and health indicators of your system at different levels of detail<sup>2</sup>.

References:

? Monitoring documentation, Interval Filter section

? UiPath Orchestrator Monitoring video, 2:10 - 2:30

**NEW QUESTION 20**

A developer is working with an application that allows all types of input methods for the Type Into activity. Which property should be enabled for the fastest execution?

- A. Click before typing
- B. Empty field
- C. Simulate
- D. Window Messages

**Answer: C**

**Explanation:**

The Simulate option is a property of the Type Into activity that enables the fastest execution of the activity. This is because the Simulate option does not rely on the hardware drivers or the UI elements to perform the typing action. Instead, it uses the technology of the target application to directly inject the text as a stream of characters. This makes the Simulate option faster, more reliable, and more compatible than the other input methods. The Simulate option also allows the activity to run in the background, meaning that it does not require the application to be in focus or visible.

References:

? Type Into - UiPath Activities

? Input Methods - UiPath Studio

? UiPath Type Into Activity: Step-by-Step Guide with Examples - RPA Tutorial

**NEW QUESTION 21**

Which of the following statements accurately describes the primary components of a State Machine in a workflow?

- A. A State Machine consists of four primary components: States, Triggers, Transitions, and Actions.
- B. A State Machine is composed of States, Triggers, and Loops.
- C. A State Machine comprises three main components: Sequences, Flowcharts, and Input/Output Arguments.
- D. A State Machine is made up of States, Transitions, Entry Actions, and Exit Actions.

**Answer: D**

**NEW QUESTION 25**

Which dependencies are automatically installed when a developer starts a blank process in UiPath Studio?

- A. UiPath.Database.Activities and UiPath.Form.Activities.
- B. UiPath.Python.Activities and UiPath.Word.Activities.
- C. UiPath.System.Activities, UiPath.Excel.Activities, UiPath.Mail.Activities, UiPath.UIAutomation.Activities and UiPat
- D. Testing.Activities.
- E. UiPath.PDF.Activities and UiPat
- F. Terminal.Activities.

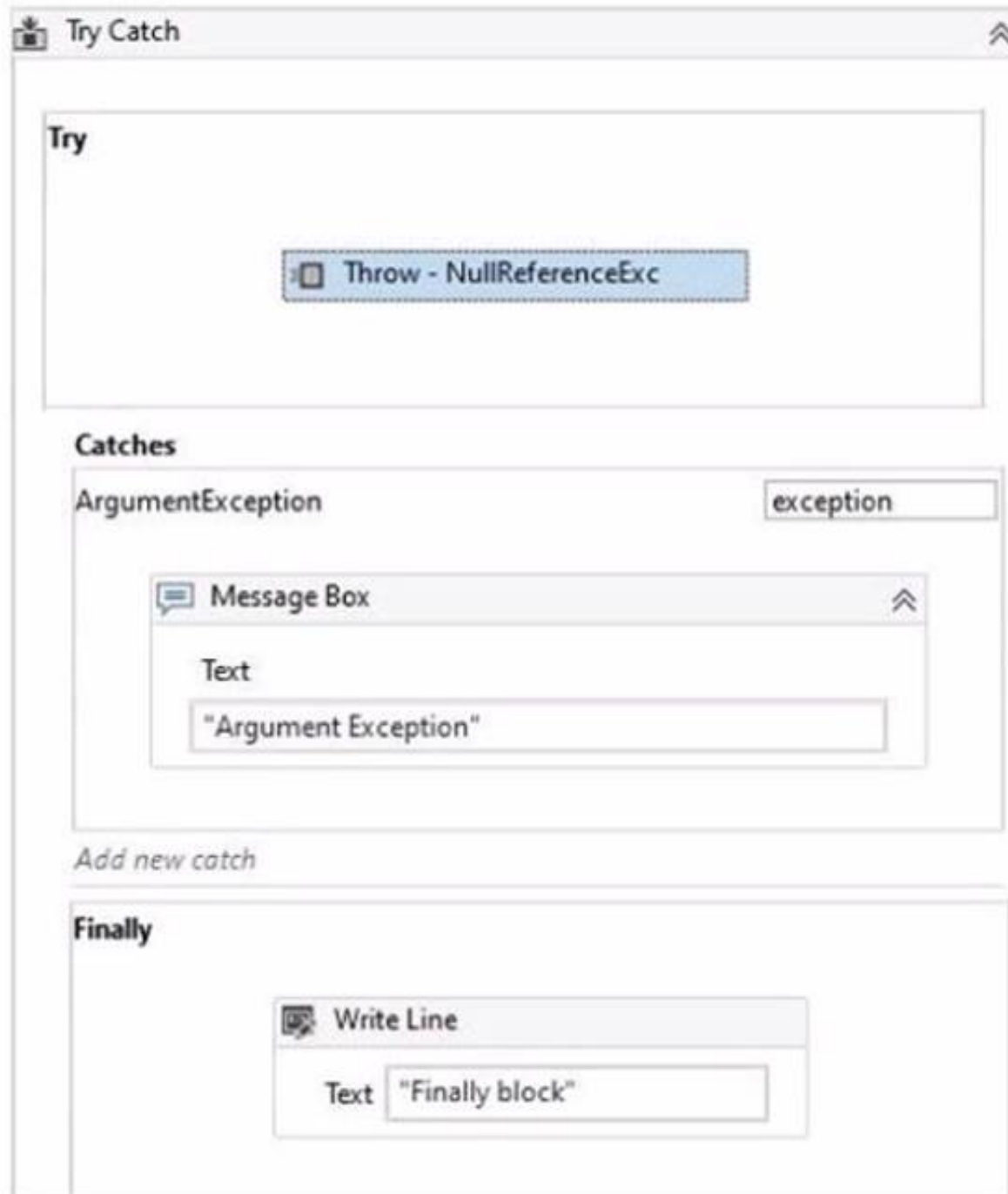
**Answer: C**

**Explanation:**

When a developer starts a blank process in UiPath Studio, the following dependencies are automatically installed by default: UiPath.System.Activities, UiPath.Excel.Activities, UiPath.Mail.Activities, UiPath.UIAutomation.Activities and UiPath. Testing.Activities. These dependencies provide the basic activities and packages that are needed for most automation projects, such as working with data types, files, Excel, email, user interface, and testing. The developer can also add or remove other dependencies as needed, depending on the specific requirements of the automation project. References: Creating a Basic Process, Managing Dependencies.

**NEW QUESTION 27**

In the Catches section of the Try Catch activity a developer selected ArgumentException in the exception handler.



What happens when the activity encounters a NullReferenceException?

- A. The Finally block is not executed and a runtime error occurs.
- B. The Finally block executes and no exception is thrown.
- C. The Catches section catches the exception and the Finally block is executed.
- D. The Catches section catches the exception and the Finally block is skipped.

**Answer: A**

**Explanation:**

When the activity encounters a NullReferenceException, the Finally block is not executed and a runtime error occurs. This is because the Catches section of the Try Catch activity only handles the ArgumentException type, which is a specific type of exception that occurs when one of the arguments provided to a method is not valid<sup>1</sup>. A NullReferenceException is a different type of exception that occurs when there is an attempt to dereference a null object reference<sup>2</sup>. Since the Catches section does not have a handler for the NullReferenceException type, the exception is not caught and the execution is stopped with a runtime error. The Finally block, which contains the activities that are always executed regardless of the outcome of the Try Catch activity, is also skipped<sup>3</sup>. References: ArgumentException Class, NullReferenceException Class, and Try Catch from UiPath documentation.

**NEW QUESTION 31**

In the Robotic Enterprise (RE) Framework, at which point should a developer log a clear message with the Logging Level set to "Information," adhering to the best practices for automating a production-level process?

- A. Whenever an argument or value is used.
- B. Whenever data is fetched from external sources.
- C. Whenever an exception is caught in a Catch block.
- D. Whenever the robot encounters an error on a Queue Item.

**Answer: C**

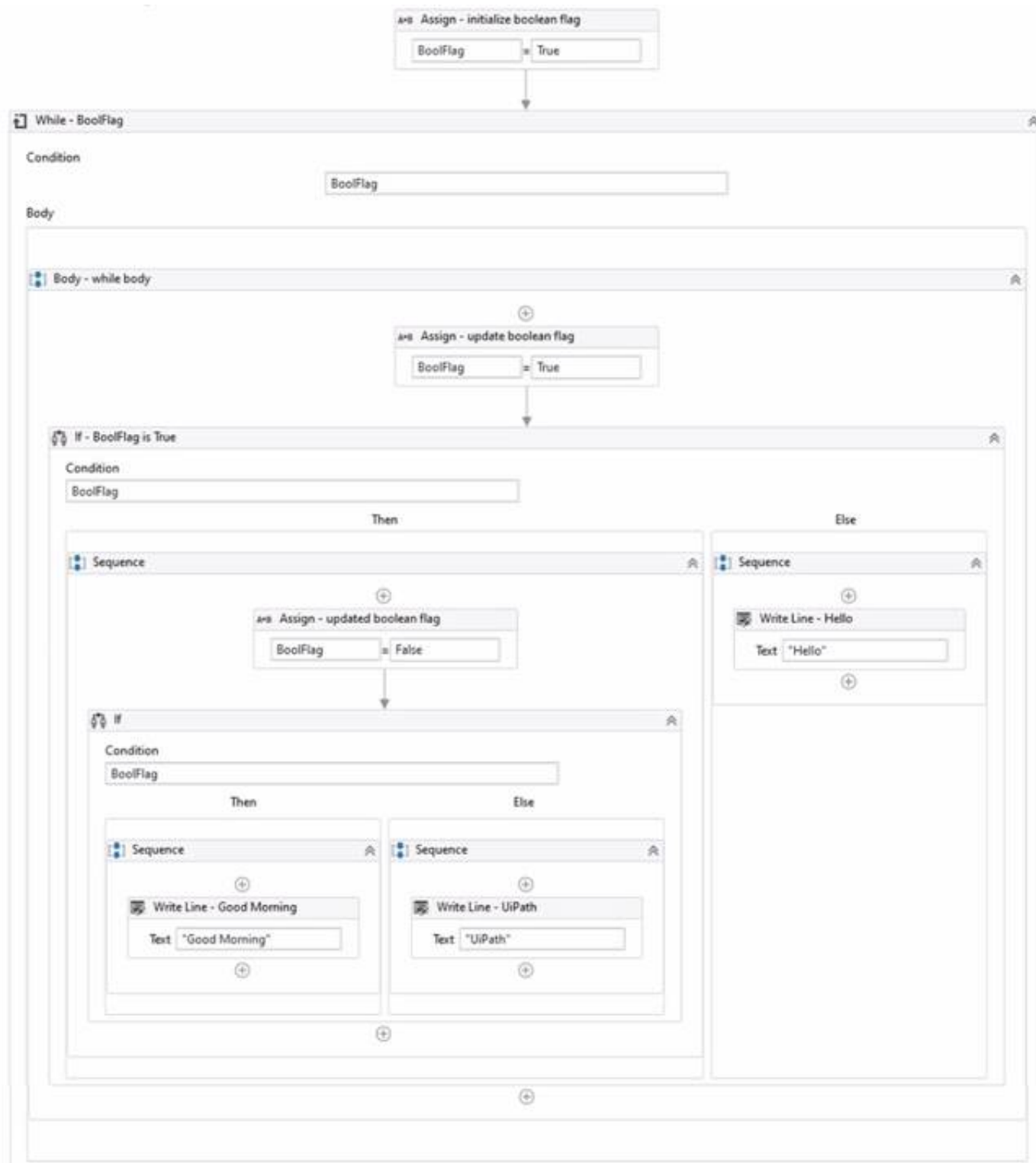
**Explanation:**

Logging Level "Information" is used to log general information about the process execution, such as the start and end of a transaction<sup>1</sup>. When an exception is caught in a Catch block, the developer should log a clear message with this level to indicate the type and source of the error, and the action taken to handle it<sup>2</sup>. <https://docs.uipath.com/studio/standalone/2023.4/user-guide/logging-levels>

**NEW QUESTION 36**

Review the following exhibit.





Based on the exhibit, which output is produced in the Output panel?

- A. Hello
- B. Good Morning UiPath
- C. Good Morning
- D. UiPath

**Answer: C**

**Explanation:**

Based on the exhibit, the output produced in the Output panel is “Good Morning”. This is because the “If” activity checks if the “BoolFlag” variable is True. If it is True, the “Then” branch is executed, which contains a “Write Line” activity with the text “Good Morning”. If the “BoolFlag” variable is False, the “Else” branch is executed, which contains a “Write Line” activity with the text “UiPath”. Since the “BoolFlag” variable is assigned to True in the previous “Assign” activity, the condition of the “If” activity is satisfied, and the “Then” branch is executed. Therefore, the “Write Line” activity writes “Good Morning” to the Output panel4. References: If and How to put a if condition in assign activity? from UiPath documentation and forum.

**NEW QUESTION 38**

A developer intends to enter text into an input field using a combination of a string and a hotkey. The input action should take place within a hidden or minimized window.

Which input method(s) can be used individually for the Type Into activity?

- A. Simulate only.
- B. Simulate and Window Messages.
- C. Same as App/Browser and Simulate.
- D. Window Messages only.

**Answer: B**

**Explanation:**

The Type Into activity is used to enter text in a specified UI element, such as a text box. It has three input methods that can be selected from the properties panel: Default, Simulate, and Window Messages1. Each input method has different advantages and limitations, depending on the target application and the automation scenario2.

? The Default input method uses the hardware driver to simulate the keystrokes, as if a human user is typing on the keyboard. It is the most reliable and compatible input method, but it requires the target application to be in focus and visible on the screen. It also supports sending special keys, such as Tab or Enter, using brackets [k(enter)] or [k(tab)].

? The Simulate input method uses the technology of the target application to directly

inject the text into the UI element. It does not rely on the hardware driver, so it can work in the background, even if the target application is hidden or minimized. It



also supports sending special keys using brackets [k(enter)] or [k(tab)]. However, it may not be compatible with some applications or UI elements that do not support this method.

? The Window Messages input method uses the Windows API to send messages

directly to the target application. It can also work in the background, even if the target application is hidden or minimized. It does not support sending special keys using brackets [k(enter)] or [k(tab)], but it can send them using modifiers such as

{ENTER} or {TAB}. However, it may not be compatible with some applications or UI elements that do not accept window messages.

Therefore, if a developer intends to enter text into an input field using a combination of a string and a hotkey, and the input action should take place within a hidden or minimized window, they can use either the Simulate or the Window Messages input method individually for the Type Into activity. They cannot use the Default input method, because it requires the target application to be in focus and visible on the screen. They also cannot use the Same as App/Browser input method, because it is not an option for the Type Into activity.

References:

? Type Into - UiPath Documentation Portal.

? What are different Input methods in UiPath - UiPath Community Forum.

#### NEW QUESTION 40

Which activity can be used to transition a Background Process to Foreground?

- A. Use Foreground
- B. Activate
- C. Maximize Window
- D. Set Focus

**Answer:** A

#### Explanation:

The Use Foreground activity can be used to transition a Background Process to Foreground. It allows you to perform UI automation tasks that require user interaction or visibility<sup>1</sup>. The other activities are not suitable for this purpose.

References:

? Background Process Automation documentation, Transitioning a Background Process to Foreground section

#### NEW QUESTION 42

In a UiPath project that uses State Machines, under what circumstances should the Final State activity be used in the project?

- A. When initiating the first state of a state machine.
- B. When marking the successful completion or termination of a state machine's execution.
- C. When a particular state contains complex conditional logic.
- D. When an intermediary state has multiple possible transitions.

**Answer:** B

#### Explanation:

The Final State activity is used to indicate the end of a state machine's execution, either successfully or with an error<sup>1</sup>. The Final State activity has only one section, Entry, where you can add activities to perform before exiting the state machine<sup>2</sup>. You can have more than one Final State in a state machine, but you can only create one Initial State<sup>3</sup>. The Final State activity should be used when you want to mark the completion or termination of a state machine's execution, not when initiating the first state, handling complex logic, or having multiple transitions.

<https://docs.uipath.com/activities/other/latest/workflow/final-state>

#### NEW QUESTION 45

A developer is building a process that types data into input fields using the Hardware Events input method. Which property of the Type Into activity should be modified to reduce the pace at which the input string characters are typed into the fields?

- A. Delay before
- B. Alter disabled element
- C. Delay between keys
- D. Delay after

**Answer:** C

#### Explanation:

The Delay between keys property of the Type Into activity specifies the time (in milliseconds) between each keystroke when using the Hardware Events input method. Increasing this value can slow down the typing speed and reduce the risk of missing or skipping characters. (UiPath Automation Developer study guide)

References:

? Type Into

? Input Methods

#### NEW QUESTION 48

What is the recommended approach for handling tabular data when building a REFramework transactional project in UiPath?

- A. Implement custom activities to handle the tabular data.
- B. Convert the tabular data into a string format and store it in a single variable.
- C. Use separate variables to store each column of the tabular data.
- D. Utilize a DataTable variable to store and process the tabular data.

**Answer:** D

#### Explanation:

A DataTable variable is a data structure that can store and manipulate tabular data in UiPath. A DataTable variable has rows and columns that correspond to the rows and columns of the tabular data source, such as an Excel or CSV file. A DataTable variable can be used to store the input data for a REFramework transactional project, where each row represents a transaction item. The REFramework template can be modified to use a DataTable variable as the

TransactionItem type and to process each row in the GetTransactionData and ProcessTransaction workflows. Using a DataTable variable is the recommended approach for handling tabular data when building a REFramework transactional project in UiPath, because it is efficient, flexible, and easy to use. (UiPath ReFramework documentation<sup>1</sup>)

References:

? 1: Robotic Enterprise Framework Template - UiPath Studio.

#### NEW QUESTION 50

What is the functionality of the Include Subfolders filter in the Monitoring pages when a modern folder is selected?

- A. It allows you to choose between background and foreground processes for the displayed data.
- B. It allows you to select whether the contents of the selected folder's subfolders are displayed.
- C. It enables you to sort the displayed data based on job priorities.
- D. It allows you to allocate licenses per machine for the displayed data.

**Answer:** B

#### Explanation:

The Include Subfolders filter is a toggle button that appears in the Monitoring pages when a modern folder is selected from the Folders drop-down list<sup>1</sup>. The modern folders are folders that can have subfolders and support role-based access control<sup>2</sup>. The Include Subfolders filter allows you to choose whether to display the data for the selected folder only, or for the selected folder and all its subfolders<sup>3</sup>. This filter applies to the Jobs, Queues, Triggers, and Robots pages<sup>4</sup>. The Include Subfolders filter helps you to monitor and manage the processes and resources across different levels of folders. <https://forum.uipath.com/t/read-all-file-from-sub-folder-and-sub-folder-of-sub-folder/460493>

#### NEW QUESTION 53

During which stage does an automation developer have the least contribution and responsibility?

- A. In the Discovery and Kickoff, Process Analysis, and Solution Design stages.
- B. In the Development and Unit Testing, Integration and UAT, and Deployment and Hypercare stages.
- C. In the Solution Design, Development and Unit Testing, and Deployment and Hypercare stages.
- D. In the Discovery and Kickoff, Development and Unit Testing, and Deployment and Hypercare stages.

**Answer:** A

#### Explanation:

According to the UiPath Automation Implementation Methodology, the automation lifecycle consists of six stages: Discovery and Kickoff, Process Analysis, Solution Design, Development and Unit Testing, Integration and UAT, and Deployment and Hypercare. The automation developer has the least contribution and responsibility in the first three stages, as they are mainly focused on identifying, analyzing, and designing the automation solution. The automation developer's role is more prominent in the last three stages, as they are responsible for developing, testing, deploying, and monitoring the automation projects and components. References: Automation Lifecycle - Standalone, Automation Developer

#### NEW QUESTION 58

A developer stored a UiPath Studio project remotely in GIT. Which feature allows the developer to view the project on their local machine?

- A. Clone Repository
- B. Copy to GIT
- C. Disconnect
- D. GIT Init

**Answer:** A

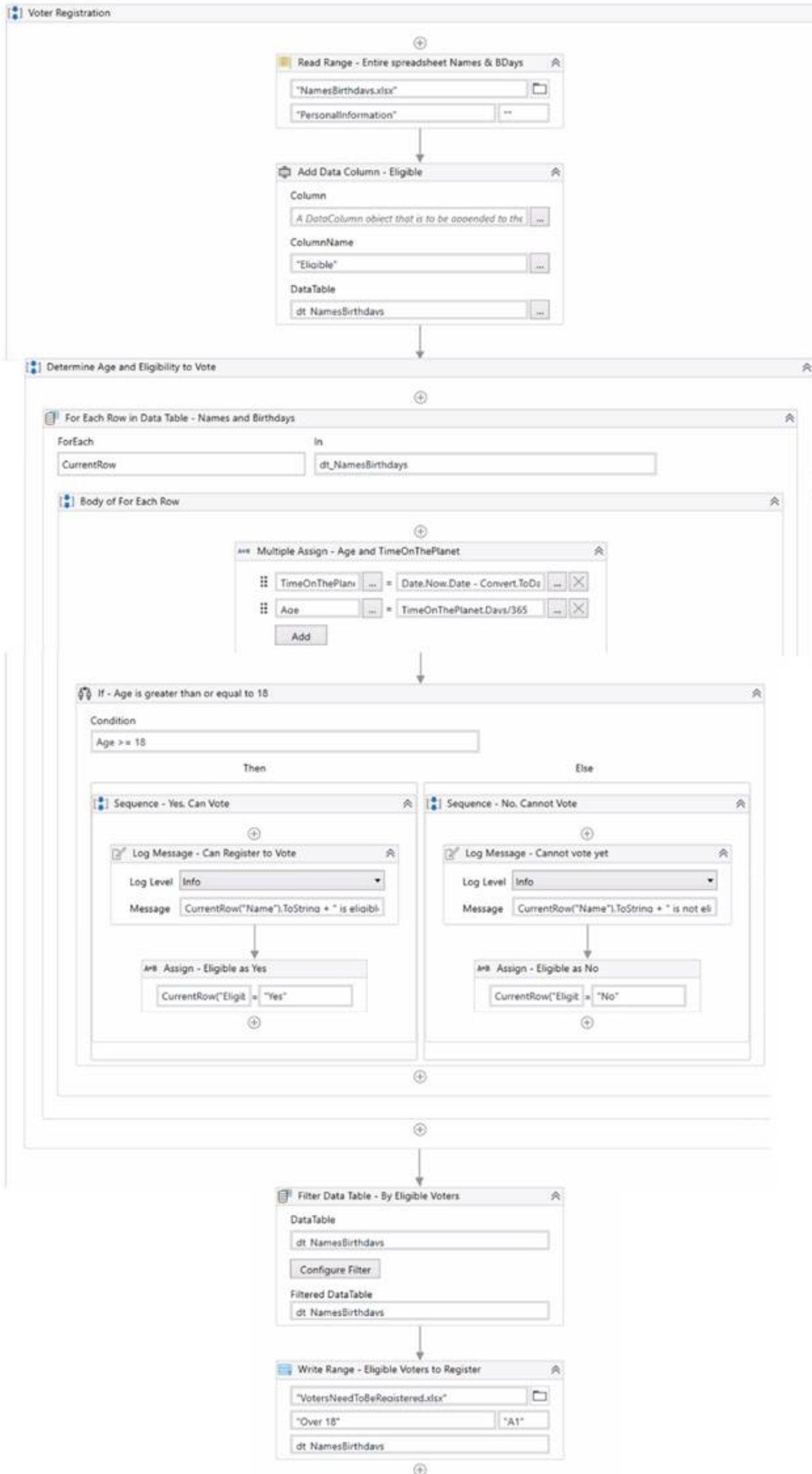
#### Explanation:

The Clone Repository feature allows the developer to copy a remote GIT repository to a local working directory. This way, the developer can view and edit the project on their local machine. The Copy to GIT feature allows the developer to copy the current project to an existing GIT repository. The Disconnect feature allows the developer to disconnect the current project from the GIT repository. The GIT Init feature allows the developer to add the current project to a local GIT repository. References: Managing Projects with GIT

#### NEW QUESTION 59

HOTSPOT

A developer created three variables used in the workflow shown below:



Instructions: Based on best practices, select the correct Scope for each Variable type from the drop-down lists shown in the following exhibit.

Name	Variable type	Scope	Default
Age	Double	<div>▼ Sequence – Yes, Can Vote Sequence – No, Cannot Vote Body of For Each Row Determine Age and Eligibility to Vote Voter Registration</div>	Enter a VB expression
TimeOnThePlanet	TimeSpan	<div>▼ Sequence – Yes, Can Vote Sequence – No, Cannot Vote Body of For Each Row Determine Age and Eligibility to Vote Voter Registration</div>	Enter a VB expression
dt_NamesBirthdays	DataTable	<div>▼ Sequence – Yes, Can Vote Sequence – No, Cannot Vote Body of For Each Row Determine Age and Eligibility to Vote Voter Registration</div>	New System.Data.DataTable

- A. Mastered
- B. Not Mastered

Answer: A

Explanation:

Name = Age Variable type = Double Scope = Body of For Each Row  
Name = TimeonThePlanet Variable type = Time Span Scope = Sequence - Yes, Can Vote  
Name = dt\_NamesBirthdays Variable type = DataTable Scope = Voter Registration  
The reason for choosing these scopes is to keep the variables in the innermost scope where they are used and to avoid unnecessary clutter and duplication in the Variables panel. You can learn more about variable scope in UiPath from the following sources:  
? Variable scope - Studio - UiPath Community Forum  
? How Variable Scope Works in UiPath - Video Tutorials - UiPath Community Forum  
? How to pass variables as UiPath arguments example - TheServerSide  
? Best Practices: Select Variables scope - UiPath Community Forum

NEW QUESTION 60

The following table is stored in a variable called "dt".

	A	B	C
1	No.	Item	Quantity
2		1 apple	10
3		2 orange	20
4		3 mango	5
5		4 kiwi	80
6		5 pear	1

What will the value of the qty variable be after executing the Assign activity?

A\*B Assign

qty = dt.AsEnumerable.

Expression Editor

Set value (String)

1 dt.AsEnumerable.

2 SkipWhile(Function(x) x("Item").ToString.Equals("mango"))(0)("Quantity").ToString

OK

Cancel

- A. 5
- B. 10
- C. 80
- D. null

Answer: C



**Explanation:**

The Assign activity is used to assign a value to a variable. In this case, the variable is “qty”. The value of the variable will be 80 after executing the Assign activity because the expression in the Assign activity is “dt.AsEnumerable().Where(Function(x) x(“Item”).ToString.Equals(“mango")).Select(Function(y) y(“Quantity”).ToString).ToString”. This expression is filtering the data table “dt” for rows where the “Item” column is equal to “mango” and then selecting the “Quantity” column from those rows. Since there is only one row in the data table where “Item” is equal to “mango”, the value of the “Quantity” column in that row is 80. (UiPath Studio documentation)

References:

? : [Assign - UiPath Activities].

**NEW QUESTION 63**

A developer implemented a process using the Robotic Enterprise Framework and an Orchestrator queue. The MaxRetryNumber from the "Config.xlsx" file is set to "1" and the Max # of retries from the Queue settings from Orchestrator is set to "2". At runtime, the first transaction item throws a Business Exception. How many times will the transaction be retried?

- A. The transaction will be retried only one time.
- B. The transaction will not be retried.
- C. The transaction will be retried 2 times.
- D. The transaction will be retried multiple times, until it will be processed successfully.

**Answer: B**

**Explanation:**

The Robotic Enterprise Framework (REF) is a template that provides a structured and consistent way to develop automation processes. The REF uses an Orchestrator queue to store and process the transaction items, which are the units of work for the process. The REF also handles different types of exceptions that may occur during the execution of the process, such as system exceptions and business exceptions. A system exception is an error that prevents the normal execution of the process, such as a network failure or an application crash. A business exception is an error that is related to the business logic or rules of the process, such as an invalid input or an incorrect output. The REF has different mechanisms to deal with these exceptions, such as retrying, logging, and updating the status of the transaction items.

The MaxRetryNumber from the “Config.xlsx” file is a parameter that specifies how many times the REF will retry a transaction item when a system exception occurs. The Max # of retries from the Queue settings from Orchestrator is a parameter that specifies how many times Orchestrator will retry a transaction item when it changes to Failed status due to any exception. These two parameters are independent of each other and have different effects on the retry mechanism. In this case, the first transaction item throws a business exception, which means that there is something wrong with the data or the logic of the process. The REF will not retry a transaction item when a business exception occurs, because it assumes that retrying will not solve the problem. Instead, the REF will log the exception, update the status of the transaction item to Failed, and move on to the next transaction item. Orchestrator will also not retry a transaction item when it changes to Failed status due to a business exception, because it respects the decision of the REF. Therefore, the transaction will not be retried at all.

References:

? 1: Robotic Enterprise Framework Template - UiPath Studio.

**NEW QUESTION 68**

What actions must be manually selected in the App/Web Recorder before recording a step?

- A. Copy text using the Get Text activity. Hover over an element using the Hover activit
- B. Highlight an element using the Highlight activity.
- C. Copy text using the Get Text activity. Hover over an element using the Hover activity. Click on buttons, links, and other clickable elements such as icons or image
- D. Type text in a text area such as a text box. Select or clear a check box.
- E. Select or clear a check box. Send keyboard shortcuts using your keyboar
- F. Select an item from a drop-down.
- G. Click on buttons, links, and other clickable elements such as icons or image
- H. Type text in a text area such as a text box. Select or clear a check box. Send keyboard shortcuts using your keyboar
- I. Select an item from a drop-down.

**Answer: A**

**Explanation:**

The App/Web Recorder is a tool that allows you to record your actions on an application or a web browser and generate activities automatically<sup>1</sup>. The App/Web Recorder has a toolbar that contains different actions that you can select before recording a step<sup>2</sup>. Some of these actions are:

? Click: This action records a click on a button, link, or any other clickable element.

? Type: This action records typing text in a text box or any other text area.

? Check: This action records selecting or clearing a check box.

? Send Hotkey: This action records sending keyboard shortcuts using your keyboard.

? Select Item: This action records selecting an item from a drop-down list or any other selector.

These actions are automatically detected and recorded by the App/Web Recorder when you perform them on the application or web browser<sup>3</sup>. However, there are some actions that are not automatically detected and recorded by the App/Web Recorder, and you need to manually select them from the toolbar before recording a step. These actions are:

? Get Text: This action records copying text from a label, paragraph, or any other text element.

? Hover: This action records hovering over an element with your mouse cursor.

? Highlight: This action records highlighting an element with a colored border. These actions are useful for extracting data, triggering events, or identifying elements on the application or web browser<sup>4</sup>. To use these actions, you need to select them from the toolbar and then indicate the element on the screen that you want to apply them to<sup>5</sup>.

Therefore, option A is the correct answer, as it lists the actions that must be manually selected in the App/Web Recorder before recording a step. Option B includes some actions that are automatically detected and recorded by the App/Web Recorder, such as Click and Type. Option C also includes some actions that are automatically detected and recorded by the App/Web Recorder, such as Check and Send Hotkey. Option D includes all the actions that are automatically detected and recorded by the App/Web Recorder.

**NEW QUESTION 73**

Which activity is used to archive a set of files and send them as an attachment in an email?

- A. Create Folder
- B. Archive Files



- C. Compress/Zip Files
- D. Create File

**Answer:** C

**Explanation:**

The Compress/Zip Files activity is used to archive a set of files and send them as an attachment in an email. This activity allows the developer to specify the source folder that contains the files to be archived, the destination folder where the compressed file will be created, and the name of the compressed file. The activity also supports various compression formats, such as zip, tar, gz, bz2, xz, and 7z. The compressed file can then be attached to an email using the AttachmentsCollection property of the Send Mail activity. This way, the developer can reduce the size and number of the files to be sent, as well as protect them with a password if needed.

References:

- ? Compress/Zip Files - UiPath Activities
- ? Send Mail - UiPath Activities
- ? How to send multiple files in one attachment in uipath - UiPath Community Forum

**NEW QUESTION 77**

A developer needs to use the REFramework to automate a business process that involves processing transactions within an Excel table. Each transaction in the table should follow the same steps for processing and queues cannot be used as there is no Orchestrator in the environment. Which variable type is best suited for TransactionItem in this scenario?

- A. System.Data.DataRow
- B. UiPath.Core.QueueItem
- C. System.Dat
- D. DataTable
- E. System.Data.DataRow[]

**Answer:** A

**Explanation:**

The REFramework template is a robust and scalable framework for building RPA projects<sup>1</sup>. It uses a state machine to handle the different stages of the automation process<sup>2</sup>. One of the states is the Process Transaction state, where the main actions are performed on each transaction item<sup>3</sup>. A transaction item can be a queue item from Orchestrator, a data row from an Excel file, or any other type of data that needs to be processed. If the transactions are stored in an Excel table, the best variable type for TransactionItem is System.Data.DataRow, as it represents a single row of data in a DataTable. A DataTable is a collection of rows and columns that can be read from or written to an Excel file using the Excel activities. Therefore, option A is correct.

Option B is incorrect because UiPath.Core.QueueItem is a variable type that represents an item from a queue in Orchestrator. If there is no Orchestrator in the environment, queues

cannot be used and QueueItem is not applicable. Option C is incorrect because System.Data.DataTable is a variable type that represents a table of data with rows and columns. A single transaction item cannot be a whole table, but only a row from the table. Option D is incorrect because System.Data.DataRow[] is a variable type that represents an array of data rows. An array is a collection of items of the same type that can be accessed by an index. A single transaction item cannot be an array, but only an element from the array.

References:

- ? The UiPath ReFramework documentation from UiPath
- ? State Machines documentation from UiPath
- ? Process.xaml documentation from UiPath
- ? [TransactionItem Variable] documentation from UiPath
- ? [DataRow Class] documentation from Microsoft
- ? [Excel Activities] documentation from UiPath
- ? [QueueItem Class] documentation from UiPath
- ? [DataRow[] Structure] documentation from Microsoft
- ? [Array Class] documentation from Microsoft

**NEW QUESTION 80**

What method can be used to change the index of an existing column in a datatable?

- A. SetIndex
- B. MoveAt
- C. SetColumnIndex
- D. SetOrdinal

**Answer:** D

**Explanation:**

The SetOrdinal method of the DataColumn class can be used to change the index or position of an existing column in a datatable. The method takes an integer argument that specifies the new ordinal or position of the column. For example, to move the first column to the last position, one can use: yourDataTable.Columns(0).SetOrdinal(yourDataTable.Columns.Count - 1). (UiPath Automation Developer study guide)

References:

- ? DataColumn.SetOrdinal Method
- ? How to move Column from Index 0 to Index 10 in datatable

**NEW QUESTION 84**

A developer examines a workflow in which filenames are stored within a collection. The collection is initialized with a single filename. When adding a new filename to the collection, which collection variable type will cause an error?

- A. System.Collections.Generi
- B. Dictionary
- C. System.Array
- D. Syste
- E. Dat
- F. DataTable

G. System.Collections.Generic.List

**Answer:** B

#### NEW QUESTION 85

A developer needs to prioritize automating several processes. To help prevent any long- term maintenance, which process attribute should be avoided?

- A. Logical decision points
- B. Repetitive business process
- C. Frequent application changes
- D. High volume work

**Answer:** C

#### Explanation:

Frequent application changes are a process attribute that should be avoided when prioritizing automating several processes. This is because frequent application changes can cause the automation to break or malfunction, and require constant maintenance and updates. Processes that are stable and consistent are more suitable for automation, as they reduce the risk of errors and rework. References: Process Selection Criteria and Process Analysis from UiPath documentation.

#### NEW QUESTION 86

What is the purpose of credential stores in UiPath Orchestrator?

- A. To store Orchestrator event logs and related data for auditing purposes.
- B. To serve as a centralized location for storing pre-built automation workflows and processes.
- C. To securely store sensitive data such as Robot credentials and Credential Assets for use in automation processes.
- D. To store non-sensitive data and configuration settings for UiPath Studio projects.

**Answer:** C

#### Explanation:

Credential stores in UiPath Orchestrator are used to securely store sensitive information like Robot credentials and Credential Assets, which are essential for executing automated processes that require login details or other secure data. Orchestrator supports multiple credential stores at the tenant level and provides built-in support for secure stores such as CyberArk and Azure Key Vault. It also allows for the development of plugins for other secure stores if needed.

(Orchestrator - Credential Stores - UiPath Academy) References:

? Orchestrator - Credential Stores - UiPath Documentation Portal

? Credential Stores - UiPath Orchestrator

#### NEW QUESTION 88

At indication time, the Strict Selector has the following functionalities available:

- A. Open in UiExplorer, Copy to clipboard, Show all matches.
- B. Refresh, Open in UiExplorer, Copy to clipboard.
- C. Accuracy, Open in UiExplorer, Copy to clipboard, Show all matches.
- D. Ignore text, Copy to clipboard, Show all matches.

**Answer:** C

#### Explanation:

The Strict Selector option allows you to fine-tune the selector by adjusting the accuracy level and showing all the matches in the UI Explorer. The other options are not available at indication time.

References:

? Selectors in UiPath Studio course, Lesson 3: UI Explorer, Topic: Strict Selector

? Uipath Associate Certification UiRPA Question Latest course, Section 2: UI Automation, Lecture: Question 10

#### NEW QUESTION 91

Considering a process developed using REFramework, if the status of a transaction was set to "Failed" with the Error Type specified as "Business", the process will transition to which state?

- A. Get Transaction Data
- B. Initialization
- C. End Process
- D. Process Transaction

**Answer:** A

#### Explanation:

The REFramework template is a robust and scalable framework for building RPA projects<sup>1</sup>. It uses a state machine to handle the different stages of the automation process<sup>2</sup>. One of the states is the Process Transaction state, where the main actions are performed on each transaction item<sup>3</sup>. A transaction item can be a queue item from Orchestrator, a data row from an Excel file, or any other type of data that needs to be processed<sup>4</sup>. If the status of a transaction item is set to "Failed" with the Error Type specified as "Business", it means that the item did not meet a business or application requirement within the project and was therefore sent to a Set Transaction Status activity, which changed its status to Failed. In this case, the process will transition to the Get Transaction Data state, where the next transaction item is retrieved and assigned to be processed. The process will not transition to the Initialization, End Process, or Process Transaction states, as these are used for different purposes in the REFramework. References:

? The UiPath ReFramework documentation from UiPath

? State Machines documentation from UiPath

? Process.xaml documentation from UiPath

? TransactionItem Variable documentation from UiPath

? [Queue Item Statuses] documentation from UiPath

? [GetTransactionData.xml] documentation from UiPath

**NEW QUESTION 94**

DRAG DROP

The provided exhibit displays the representation of the "Deadline" field using the yyyy-mm-dd format.

Queue Item Name	Deadline	Priority
EmployeeID1		Normal
EmployeeID2	2050-01-01	High
EmployeeID3	2050-01-02	High
EmployeeID4	2050-01-01	Normal
EmployeeID5	2050-01-02	Low
EmployeeID6		High
EmployeeID7	2050-01-01	Low
EmployeeID8	2050-01-01	Normal
EmployeeID9		Low

In what order should the Queue Items be processed by a single robot executing a Performer workflow?

Queue Item

EmployeeID1

EmployeeID2

EmployeeID3

EmployeeID4

EmployeeID5

EmployeeID6

EmployeeID7

EmployeeID8

EmployeeID9

Order to be Processed

1st

2nd

3rd

4th

5th

6th

7th

8th

9th

- A. Mastered
- B. Not Mastered

**Answer:** A

**Explanation:**

The Queue Items should be processed by a single robot executing a Performer workflow in the following order:

- ? EmployeeID1
- ? EmployeeID4
- ? EmployeeID8
- ? EmployeeID3
- ? EmployeeID6
- ? EmployeeID9
- ? EmployeeID5
- ? EmployeeID2
- ? EmployeeID7

A queue is a container that holds an unlimited number of items that can be processed by a robot<sup>1</sup>. A queue item can have a deadline and a priority, which affect the order in which the robot retrieves the items from the queue<sup>2</sup>. The Performer workflow is a part of the REFramework template that processes the queue items using the Get Transaction Item activity<sup>3</sup>. The order of queue execution is determined by the following rules<sup>4</sup>:

- ? Items that have a deadline are processed first, in order of priority and according to the set deadline for items with the same priority.
- ? Items that have no deadline are processed next, in order of priority and according to the rule First In, First Out for items with the same priority.

Based on these rules and the exhibit, the order of queue execution is as follows:

- ? EmployeeID1 has the earliest deadline (2050-01-01) and high priority, so it is processed first.
- ? EmployeeID4 has the same deadline as EmployeeID1, but normal priority, so it is processed second.
- ? EmployeeID8 has the same deadline and priority as EmployeeID4, but it was added later to the queue, so it is processed third.
- ? EmployeeID3 has the next earliest deadline (2050-01-02) and high priority, so it is processed fourth.
- ? EmployeeID6 has the same deadline as EmployeeID3, but normal priority, so it is processed fifth.
- ? EmployeeID9 has the same deadline and priority as EmployeeID6, but it was added later to the queue, so it is processed sixth.
- ? EmployeeID5 has no deadline, but high priority, so it is processed seventh.

- ? EmployeeID2 has no deadline and normal priority, so it is processed eighth.
- ? EmployeeID7 has no deadline and low priority, so it is processed ninth.

References:

- ? About Queues and Transactions documentation from UiPath
- ? Processing Order documentation from UiPath
- ? Performer documentation from UiPath
- ? Order processing queue forum post from UiPath Community

**NEW QUESTION 97**

DRAG DROP

What are the steps to publish a project from UiPath Studio?

Instructions: Drag the Description found on the "Left" and drop on the correct Step Sequence found on the "Right".

Description	Step Sequence
Fill in the necessary publishing details, such as the project name, version, and description.	
Click on the "Publish" button to initiate the publishing process.	
In the Design ribbon tab, click on the "Publish" button.	
Choose the desired publishing option, such as Orchestrator, Local, or Custom NuGet feed.	

- A. Mastered
- B. Not Mastered

Answer: A

**Explanation:**

The steps to publish a project from UiPath Studio are:

- ? In the Design ribbon tab, click on the “Publish” button. The Publish Project window opens. (UiPath Studio documentation1)
  - ? Fill in the necessary publishing details, such as the project name, version, and description. You can also add release notes and select the environment where the project will run. (UiPath Studio documentation1)
  - ? Choose the desired publishing option, such as Orchestrator, Local, or Custom NuGet feed. Depending on your choice, you may need to provide additional information, such as the Orchestrator URL, the local folder path, or the custom feed URL. (UiPath Studio documentation1)
  - ? Click on the “Publish” button to initiate the publishing process. A confirmation message will appear when the project is successfully published. (UiPath Studio documentation1)
- Short Explanation: Publishing a project from UiPath Studio means creating a package that contains all the files and dependencies required to run the automation process. The package can be deployed to different locations, such as Orchestrator, a local machine, or a custom NuGet feed. Publishing a project from UiPath Studio involves four main steps: clicking on the Publish button, filling in the publishing details, choosing the publishing option, and confirming the publishing process. (UiPath Automation Developer study guide2) References:
- ? 1: Publishing Projects from Studio - UiPath Studio.
  - ? 2: UiPath Certified Automation Developer - Learning Plan.

**NEW QUESTION 99**

What variable type should the developer use to store the monetary amount read from a single cell in an Excel file, before inputting it into a field in a web application for the automation process?

- A. List
- B. Double
- C. DataRow
- D. Object

Answer: B

**Explanation:**

- The variable type that the developer should use to store the monetary amount read from a single cell in an Excel file, before inputting it into a field in a web application for the automation process, is Double. This is because the Double variable type can store decimal numbers with high precision and a large range of values. This is suitable for storing monetary amounts that may have fractions or large digits. The Double variable type can be used with the Read Cell activity to read the value from the Excel file, and with the Type Into activity to input the value into the web application. The developer can also use the Format Value activity to format the Double variable as a currency, if needed.
- References:
- ? Types of Variables - UiPath Studio
  - ? Read Cell - UiPath Activities
  - ? Type Into - UiPath Activities
  - ? Format Value - UiPath Activities

**NEW QUESTION 100**

.....

## Thank You for Trying Our Product

### We offer two products:

1st - We have Practice Tests Software with Actual Exam Questions

2nd - Questons and Answers in PDF Format

### UiPath-ADAv1 Practice Exam Features:

- \* UiPath-ADAv1 Questions and Answers Updated Frequently
- \* UiPath-ADAv1 Practice Questions Verified by Expert Senior Certified Staff
- \* UiPath-ADAv1 Most Realistic Questions that Guarantee you a Pass on Your FirstTry
- \* UiPath-ADAv1 Practice Test Questions in Multiple Choice Formats and Updatesfor 1 Year

**100% Actual & Verified — Instant Download, Please Click**  
**[Order The UiPath-ADAv1 Practice Test Here](#)**